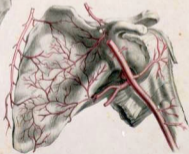


Fig. 1.

Pl. 25



Fig. 2.



London: Taylor & Francis, 1825.

Printed by W. Wood.

*J. G. S. 1825*



Fig. 1

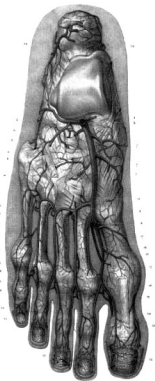


Fig. 2

Fig. 1. — *Foot, medial view.*

Fig. 2. — *Foot, lateral view.*

Fig. 1



Fig. 2





Fig. 1



Fig. 2

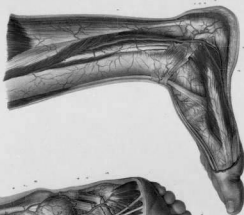


Fig. 3



Fig. 1

Fig. 2

Fig 1.

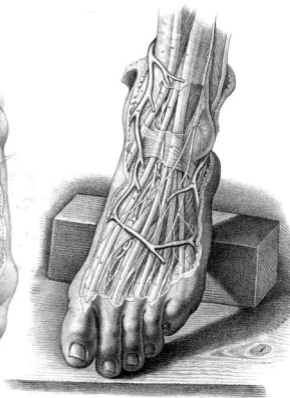


Fig. 2

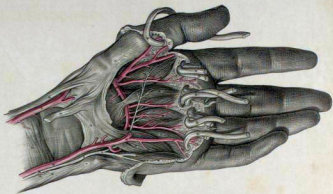


Fig. 3

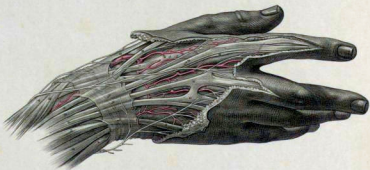
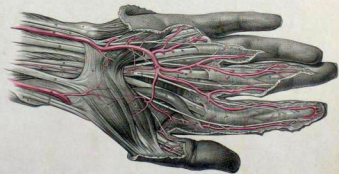


Fig. 1



Tome 4.



Fig. 2.

Reproduit d'après un dessin par W. H. Smith.

Pl. 38



Fig. 1.

W. H. Smith.





Rechts: Rechte naturae per R. B. Smith



Fig. 1

Fig. 2

Rechts: Rechte naturae per R. B. Smith

Links: Ar. Bruns