

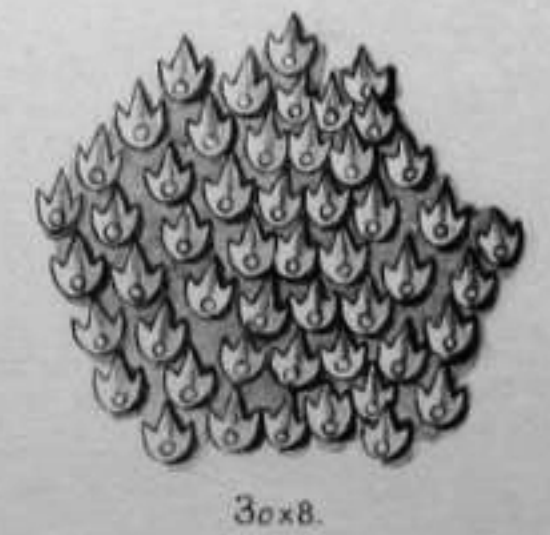
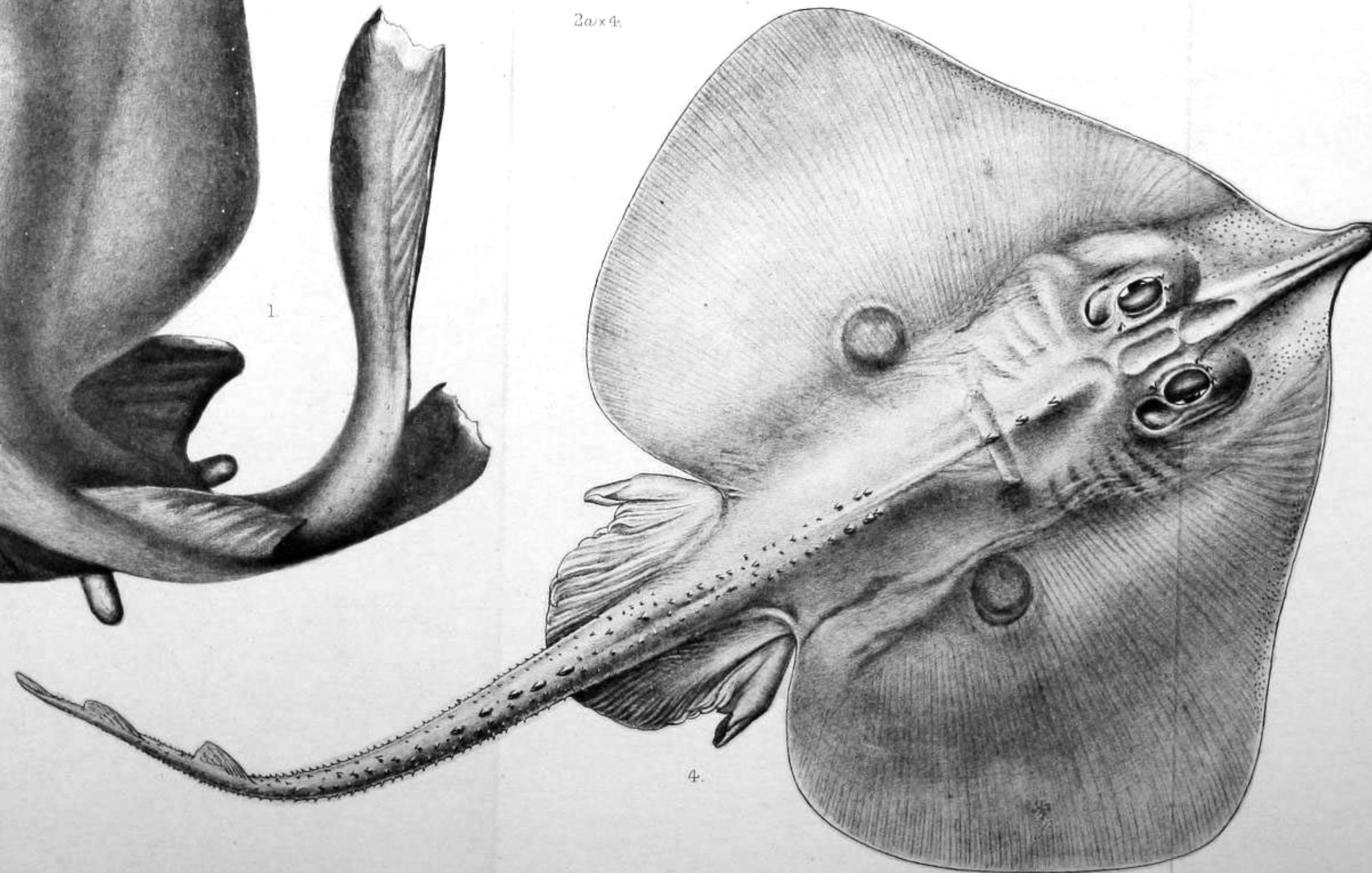
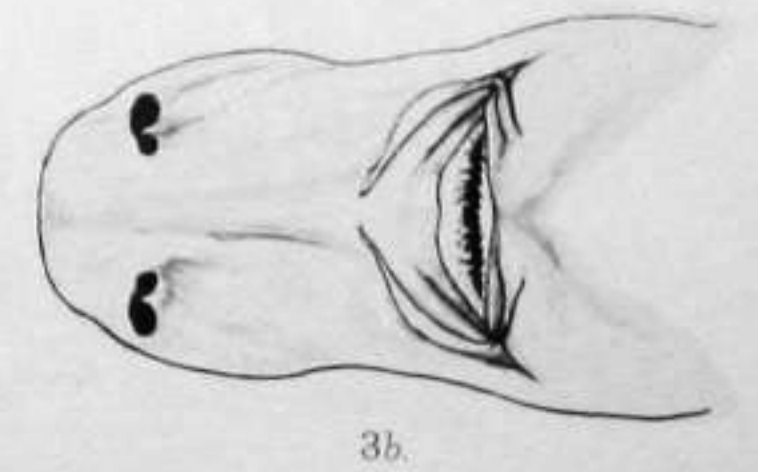
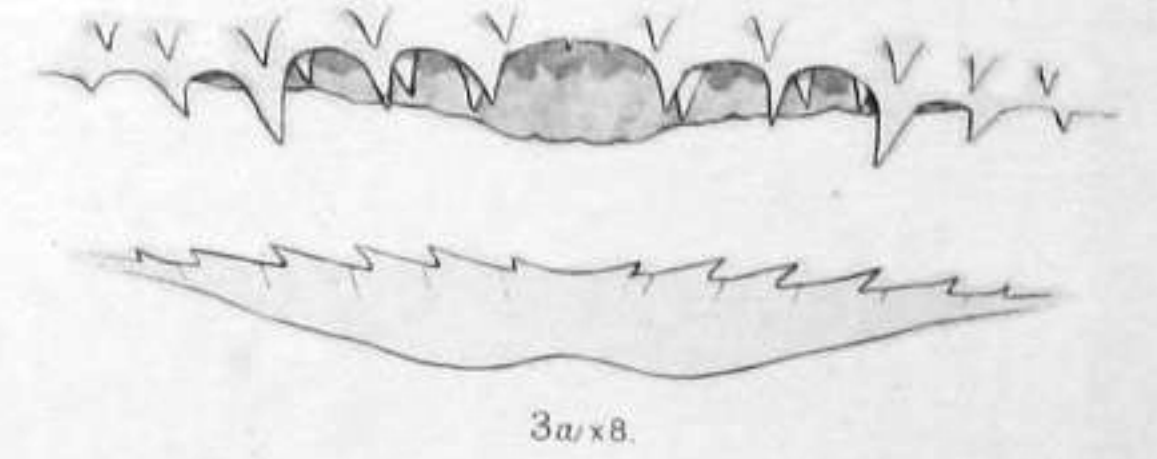
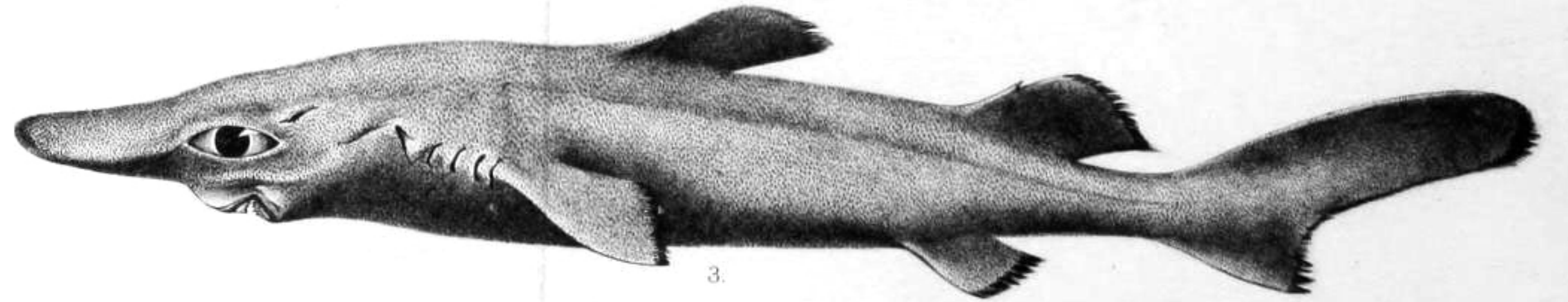
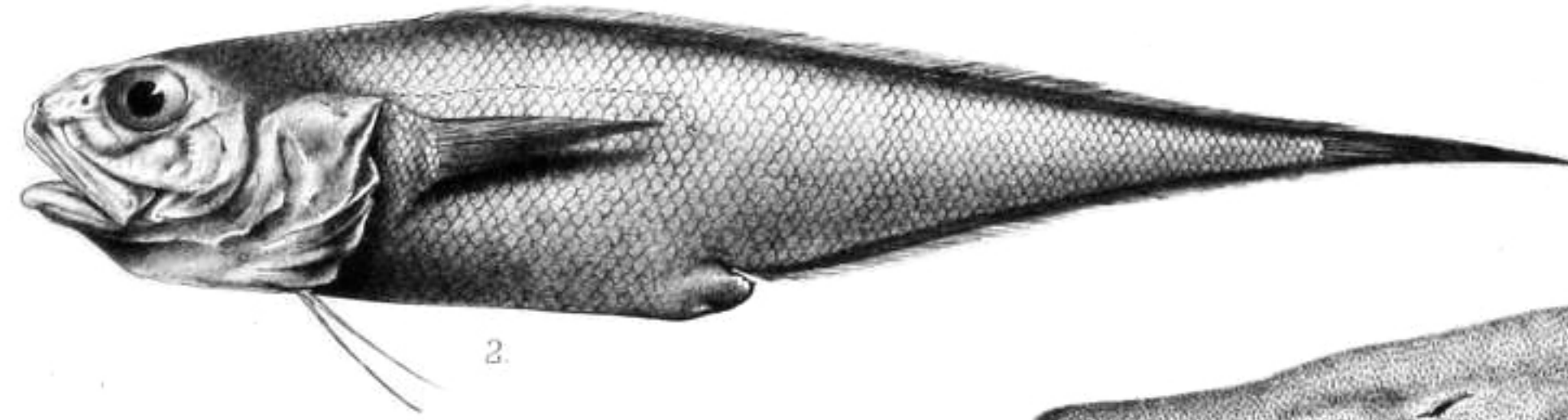
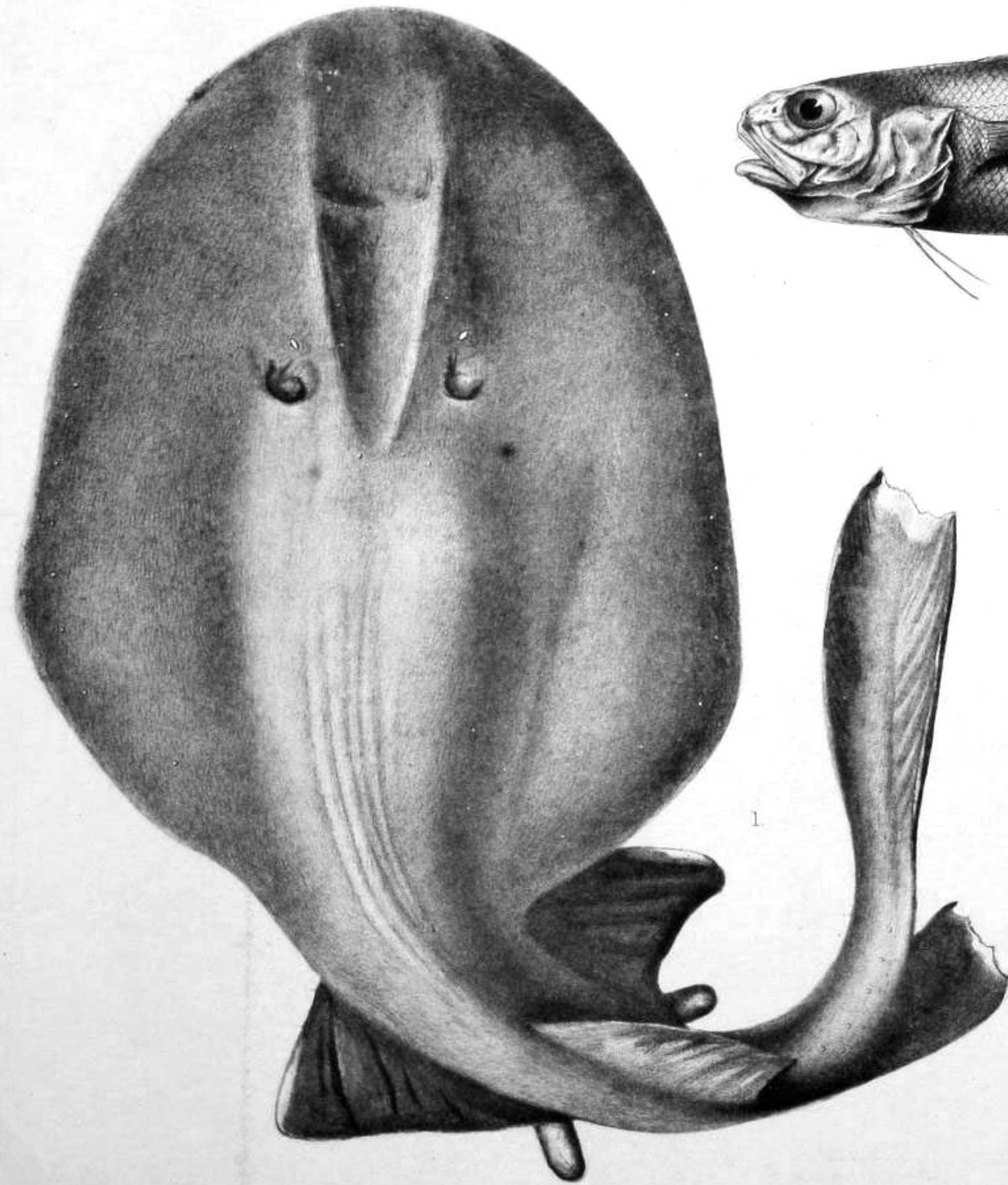
1. L'Helice livrée, 3. L'Helice cor de chasse.
2. L'Helice des vignes, 4. L'Helice d'Alger
ou Escargot. 5. Le Cerite obelisque.



G.H. Ford.

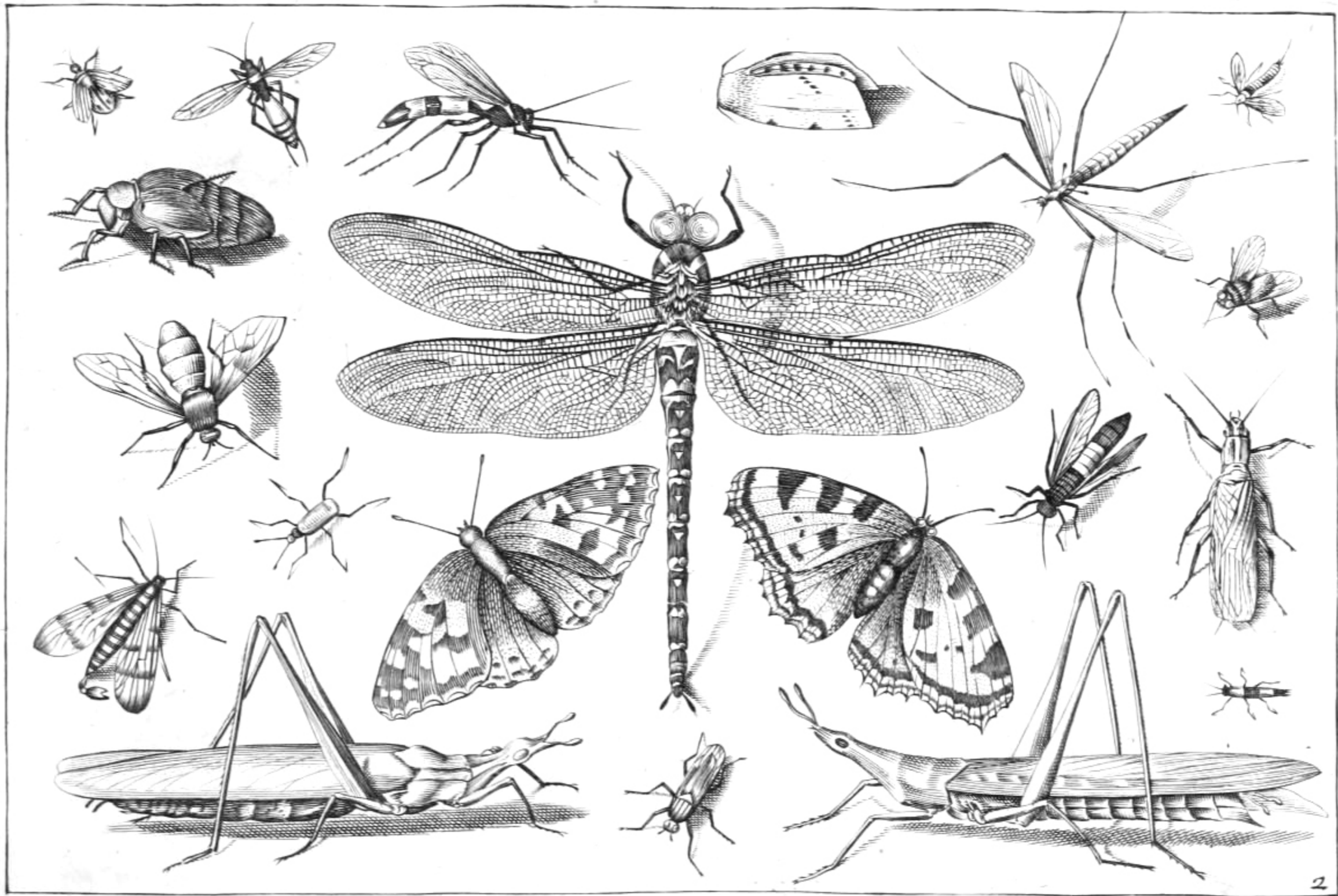
W. West imp.

A, & B, *Rana kuhlii*, adult & young. C, *Hylorana macularia*. D, *Ixalus femoralis*. E, *Ixalus temporalis*. F, *Polypedates reticulatus*. G, *Polypedates temporalis*. H, *Xenophrys monticola*. I, *Polypedates pleurostictus*. K, *Cacopus globulosus*. L, *Bufo galeatus*.

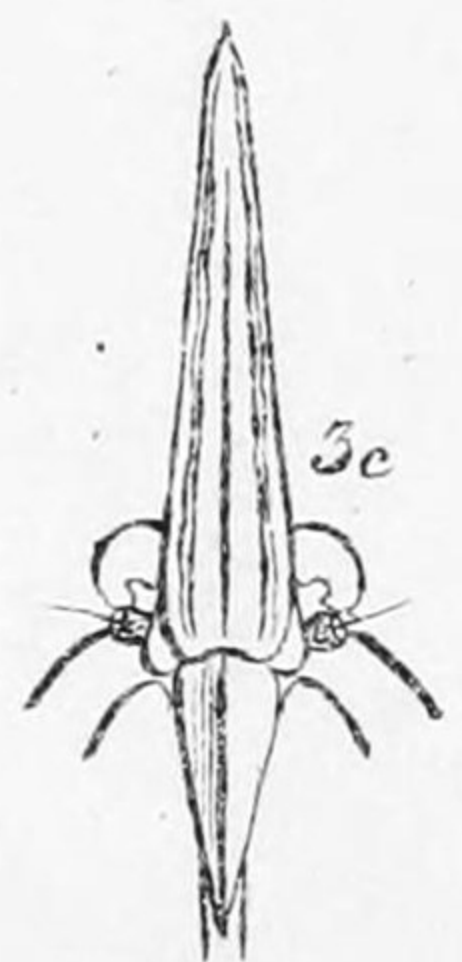
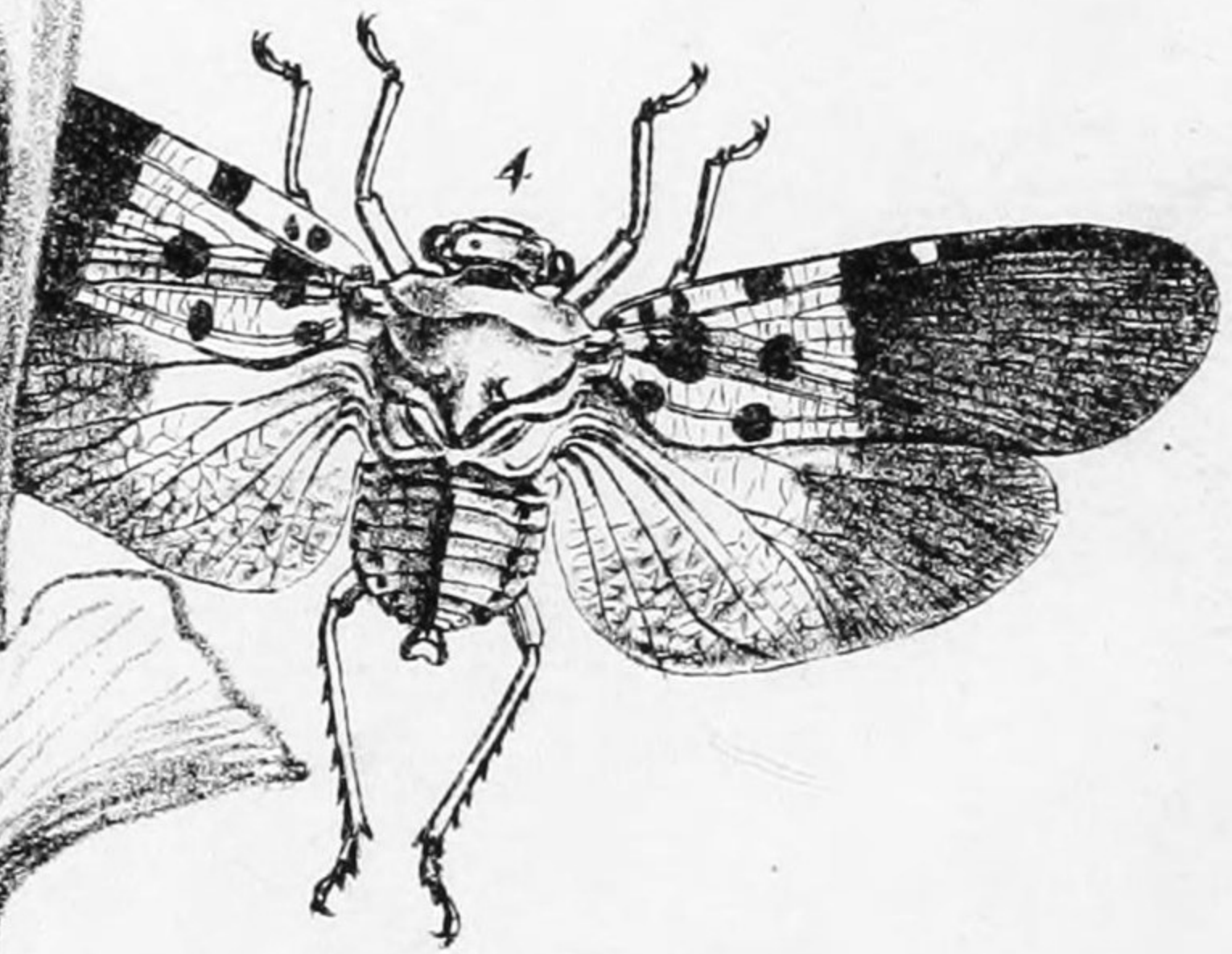
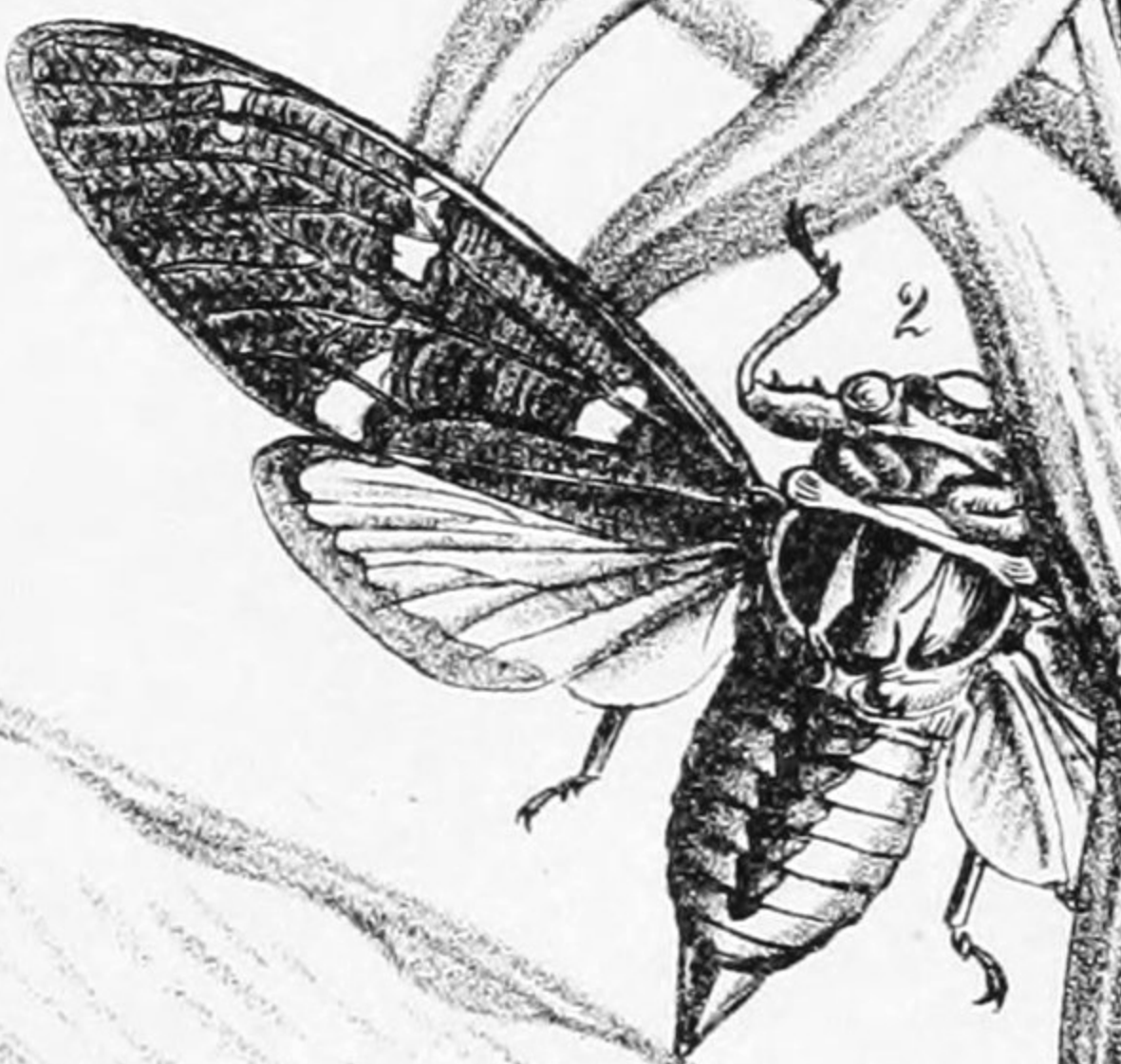
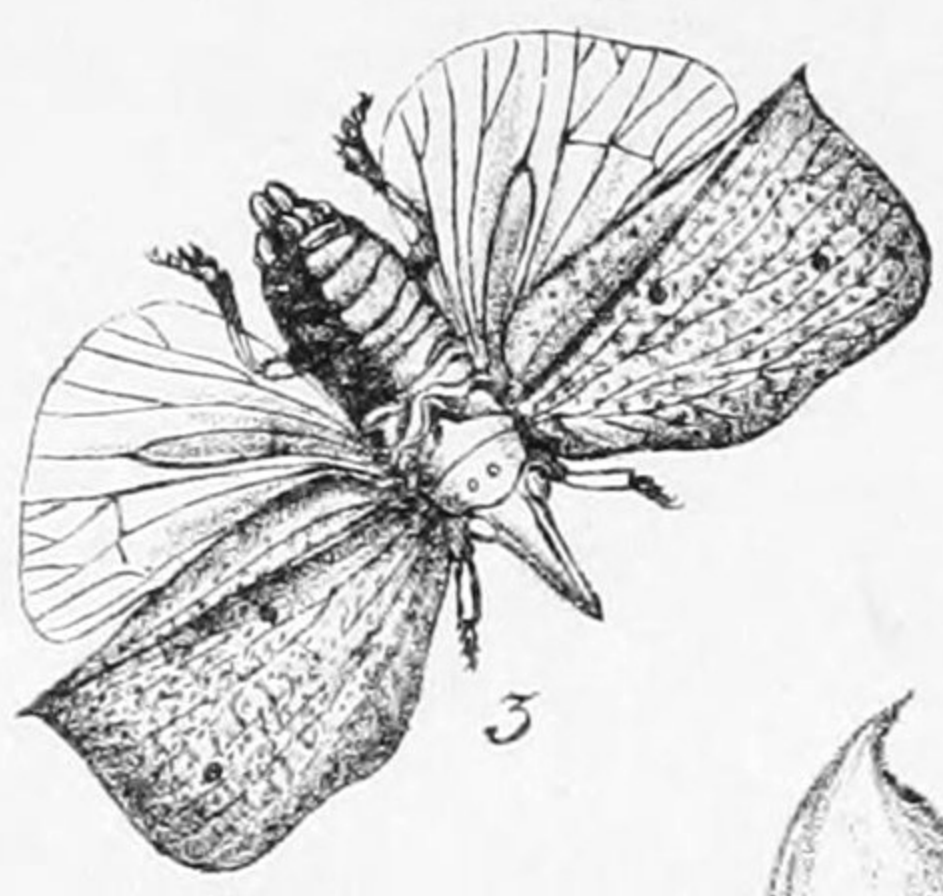


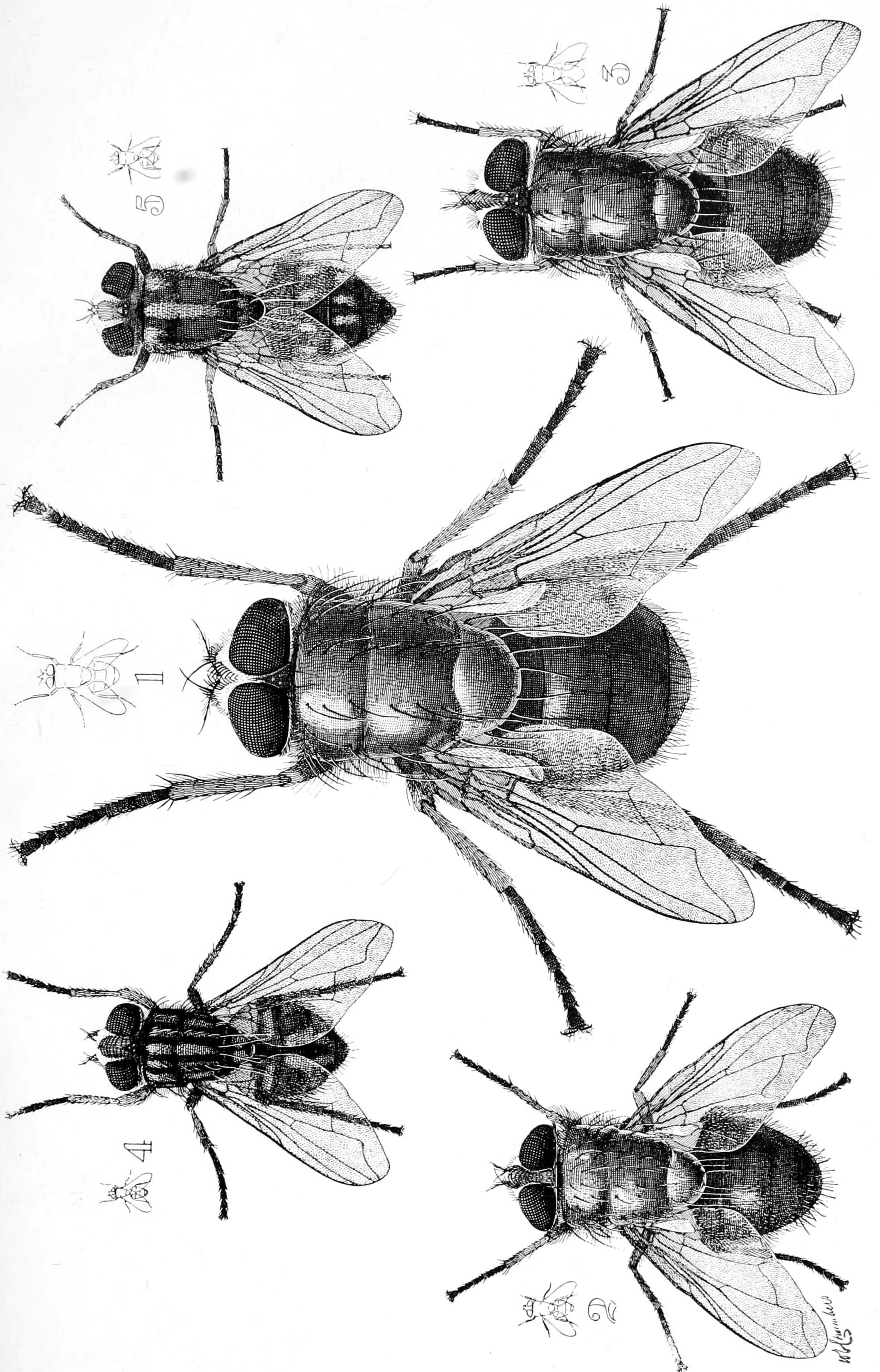
1. *Benthobatis moresbyi*. 2. *Diplacanthopoma raniceps*. 3. *Centrophorus rossi*. 4. *Raja powelli*.



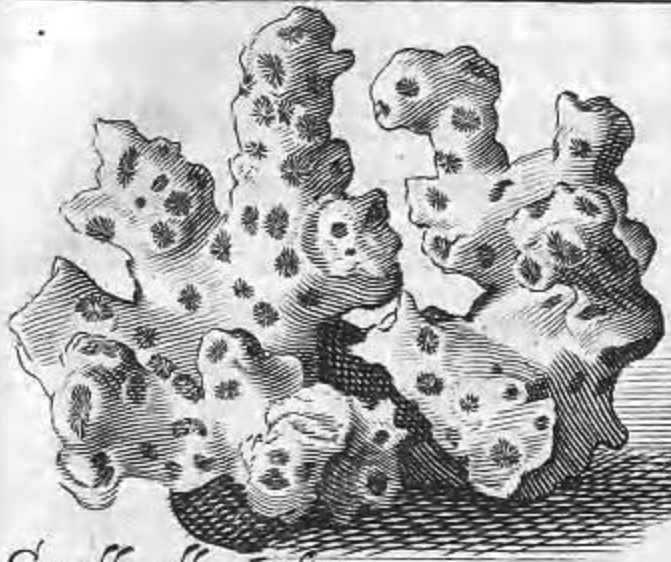




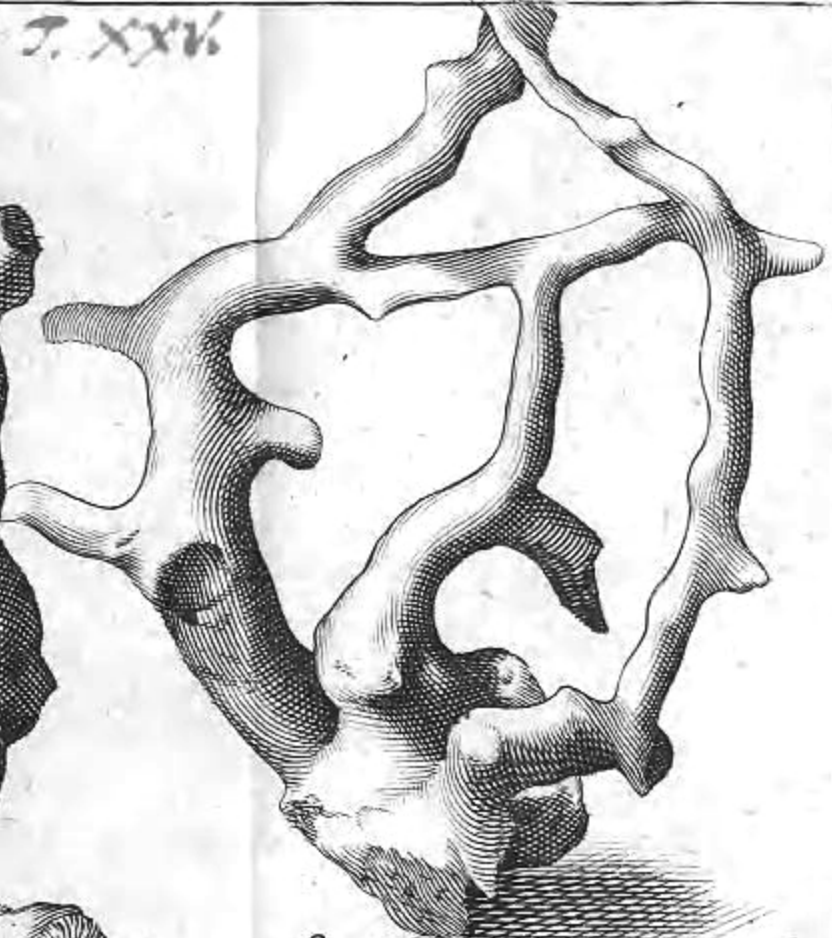
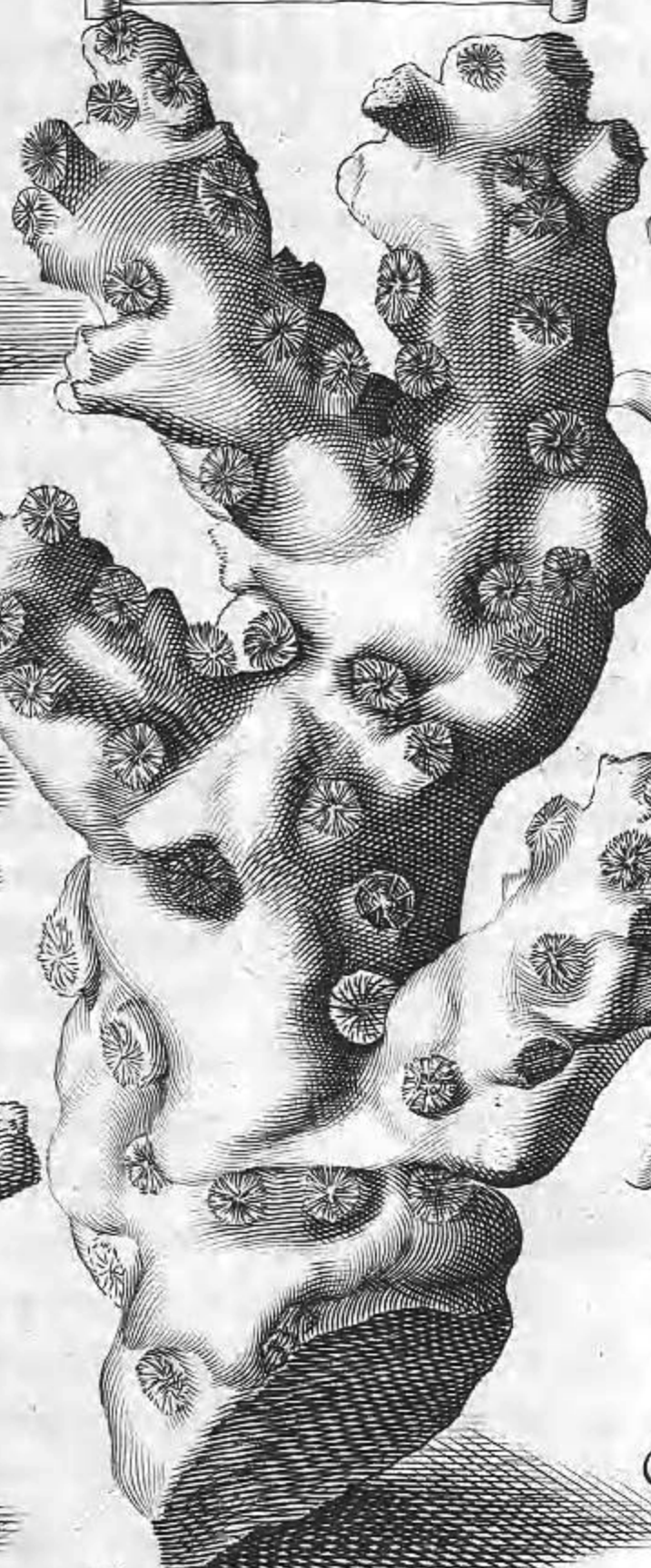




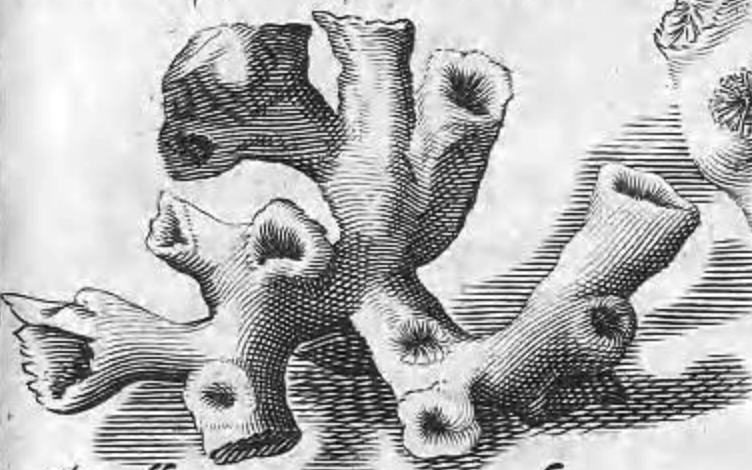
LAPIDES T. XXV



Corall: alb: Indic:
Indianische weiße Corallen.



Corall: rubicundiss:
Corallen der höchsten Rotenfarb



Corall: imatur: cinereo colore
Asche farbe vntzeitige Corallen.

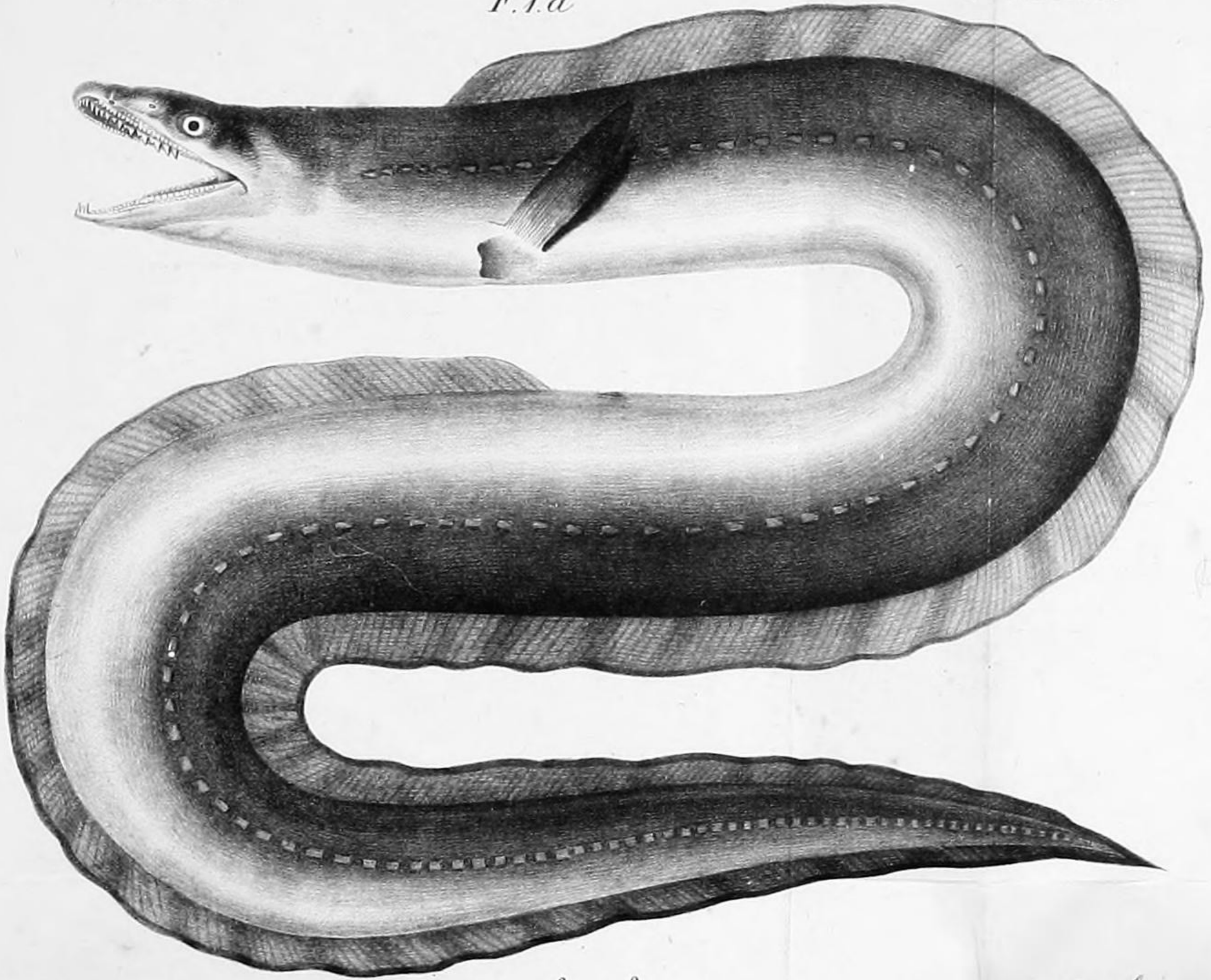


Corall: albiss:
Gar weiße Corallen.



Corall: interstincto rubro et albo colore.
Corallen von roter vnd weißer farb vntermengt.

Corall: maximus truncatus.
Der großen art Corallen.



79
Brazil

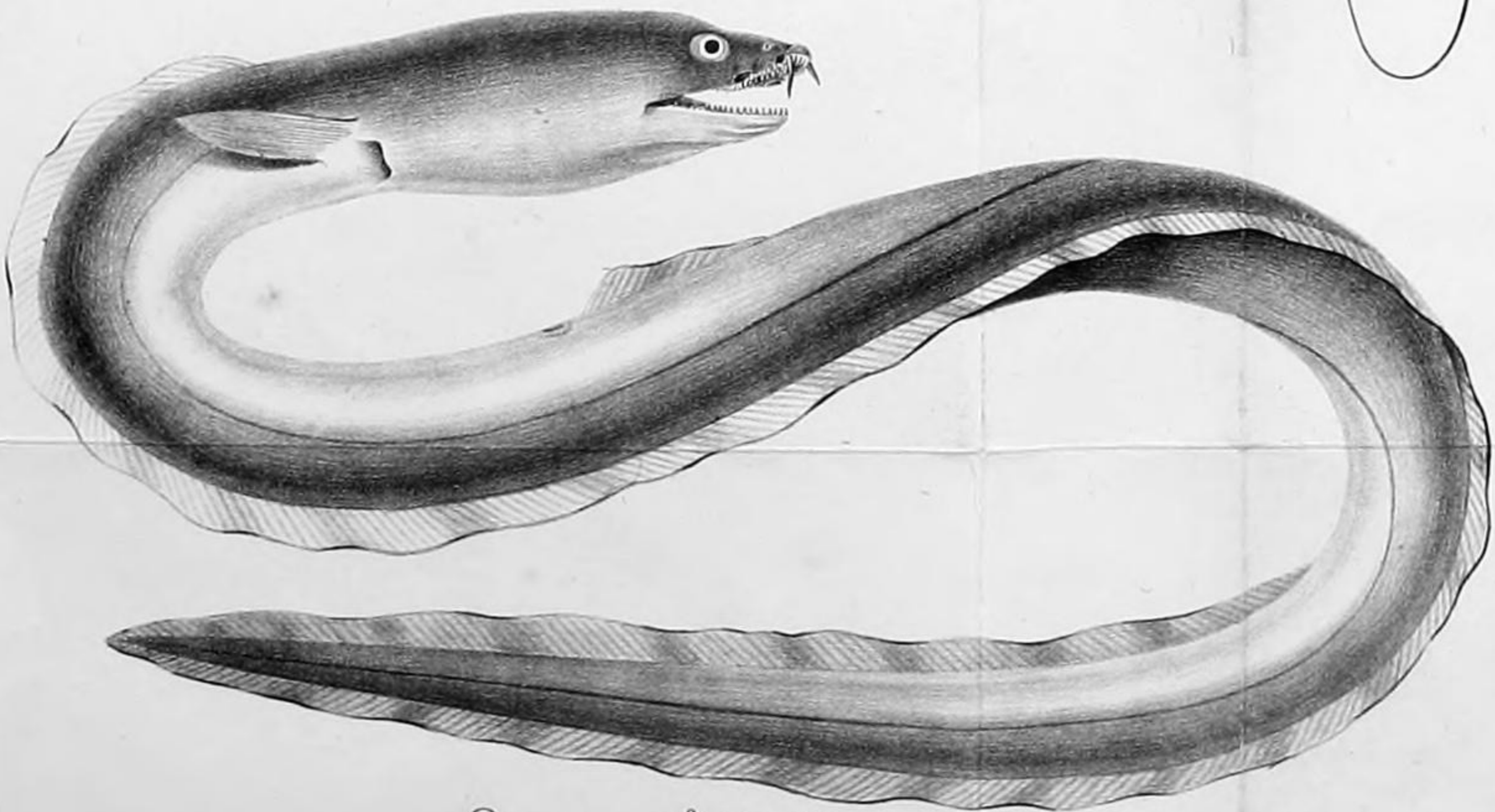
F. 2. b

Conger brasiliensis.

F. 1. b



F. 2. a



Conger cylindroides.
G. Bettini in lap. d.

A. Frati ad nat. d.

Lit. Bellini.

p. 81 Brazil



431. *Trifolium repens* L.

Weißklee.



448.
Vicia Faba L.

Saubohne.

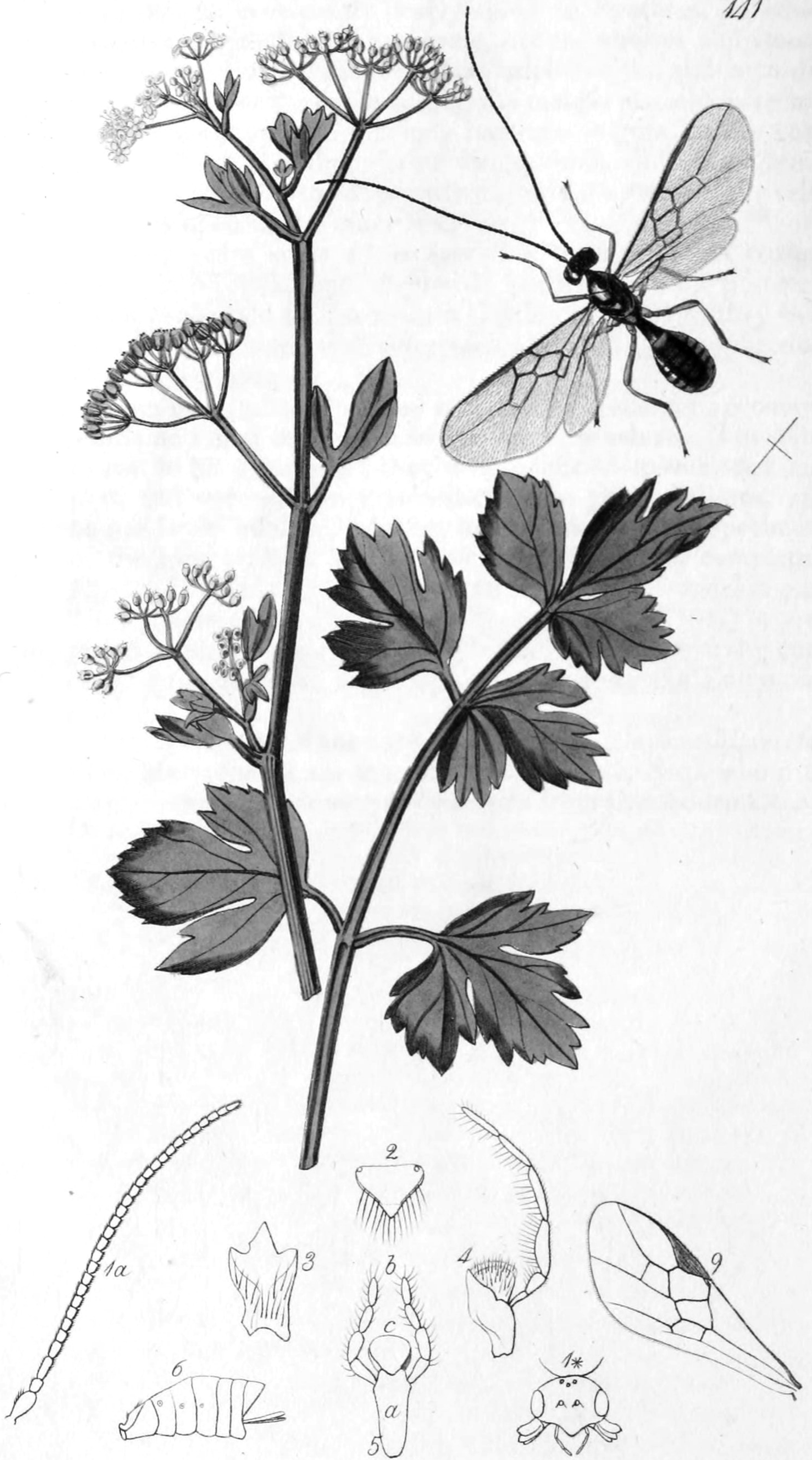


110. *Loranthus europaeus* Jacquin.

Europäische Riemenblume.

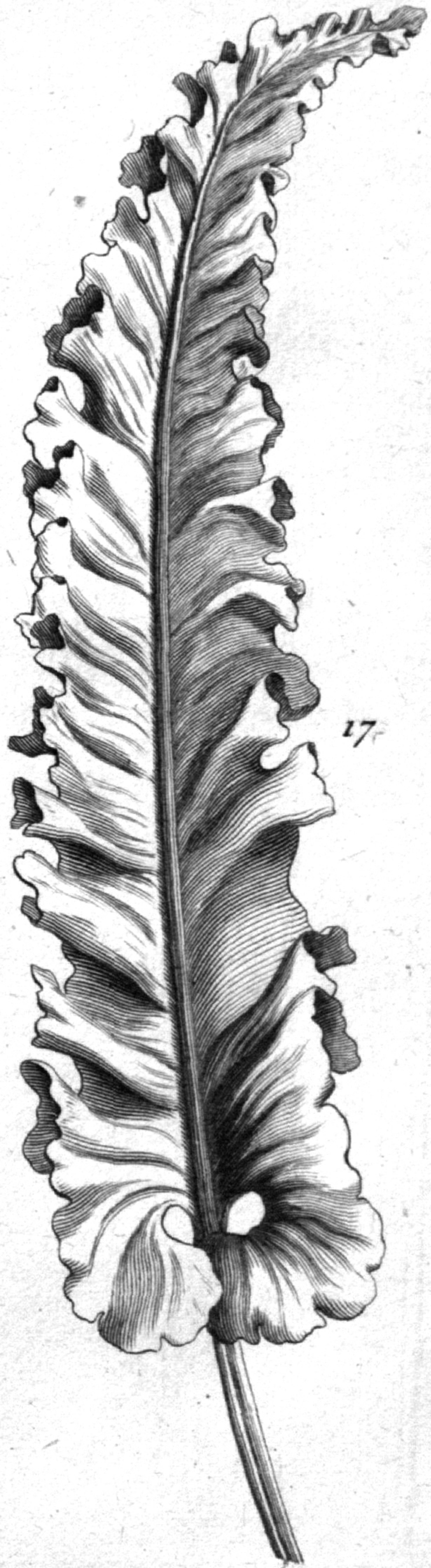


Pub. by J. Curtis Aug. 1. 1830

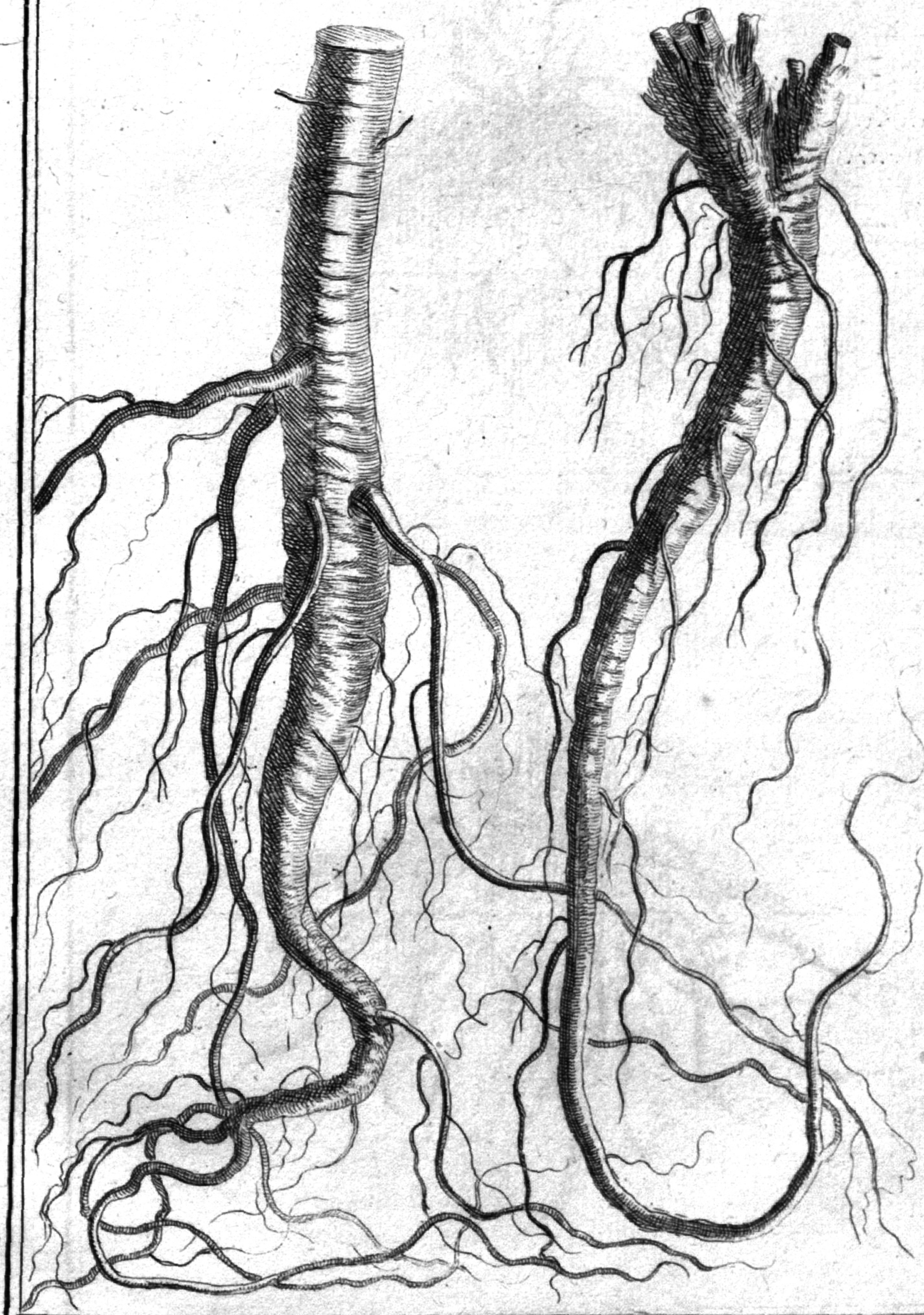


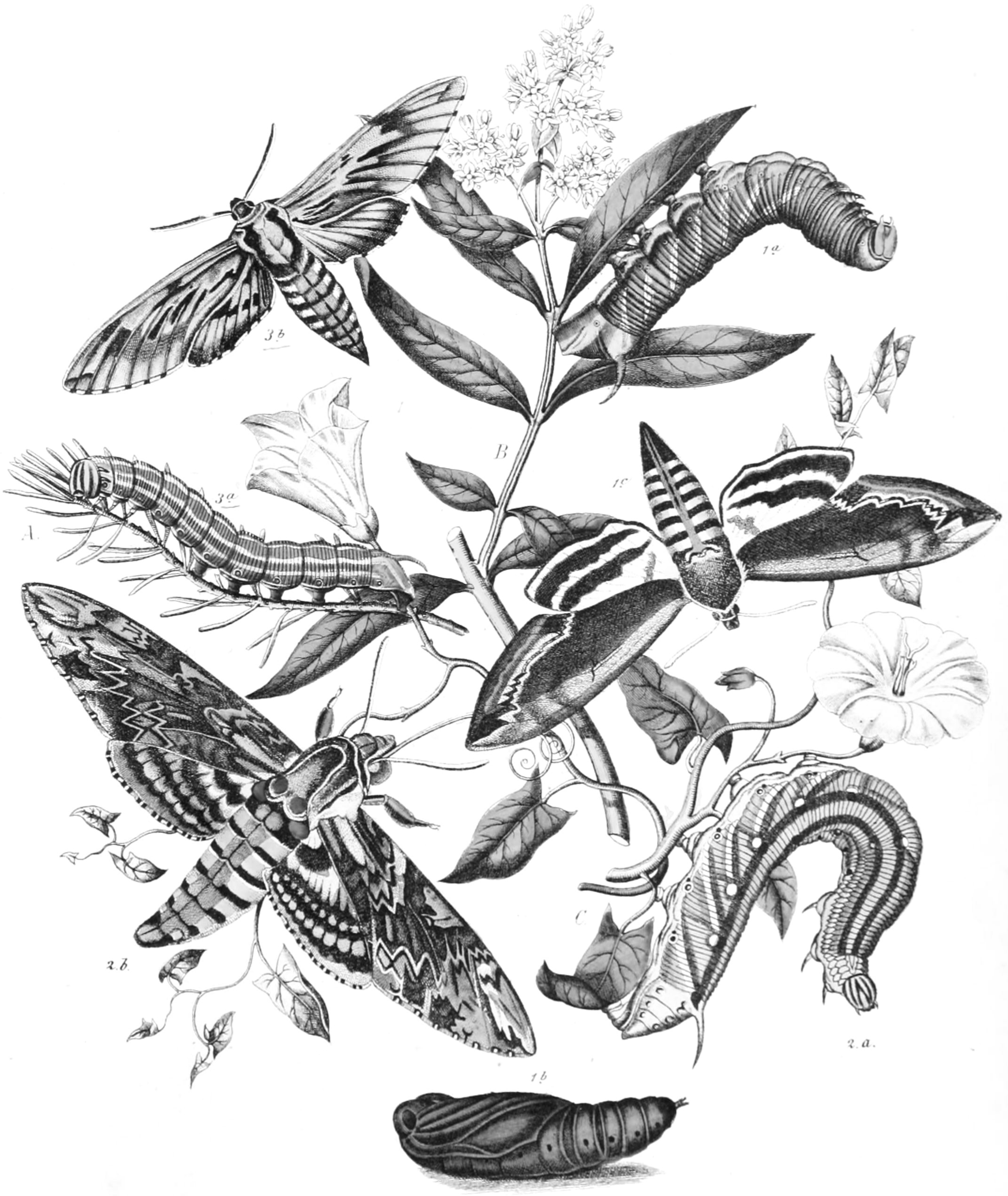


16



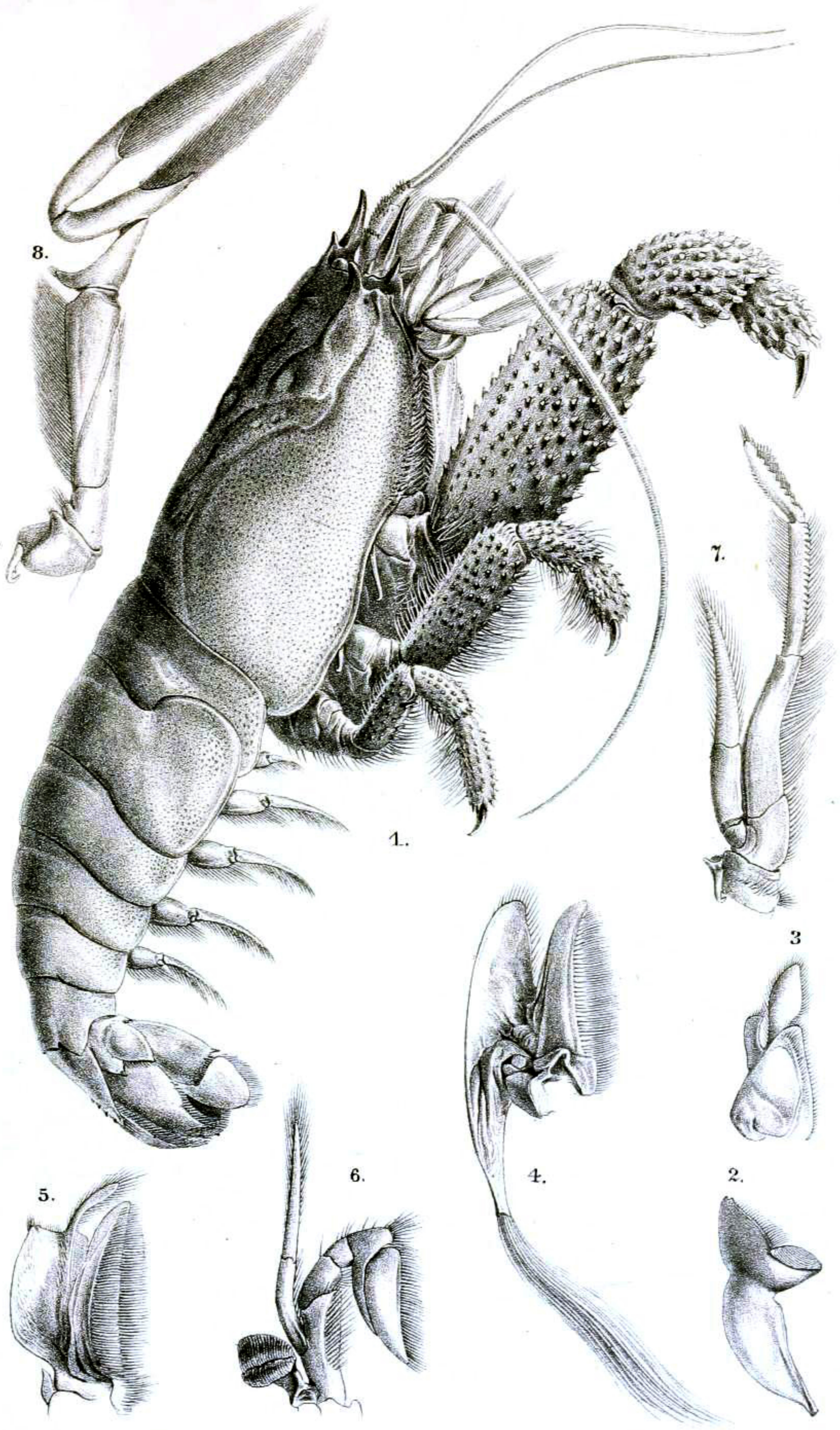
17





abies.

broëne - liscron



N.d. Nat. gez. ulith. v. Ed. Konopicky.

K. k. Hof- u. Staatsdruckerei.

