



DRACENA LINDENI.

DRACÆNAS.

Godseffiana. Undoubtedly one of the most striking new ornamental foliage plants of recent introduction. The plant is of an entirely different habit and appearance from all other Dracenas; it is of free-branching habit, and throws out many suckers from the base so as to form beautiful compact, graceful specimens in a very short time. Its foliage is broadly lanceolate, 5 to 6 inches long, and 2 to 3 inches wide; of a strong leathery texture; rich dark green color, densely marked with irregular dots and spots of a creamy-white, not unlike an Aucuba Japonica, of which the markings in the foliage strikingly remind one. It is a plant which will undoubtedly be grown very extensively for decorative purposes when it becomes more plentiful, as it is very hardy as a house plant, equaling, if not surpassing in this respect, the Aspidistra and Ficus.

2½ inch pots, \$0 35 each; \$ 3 50 per dozen.
5 " " 2 50 " 30 00 " "

Amabilis. A strong growing variety that quickly forms large specimens, prettily variegated green, white and pale violet, turning to rose.

3 inch pots, 30 cts. each; \$3 00 per dozen.
4 " " 40 " " 4 00 "
5 " " 50 " " 6 00 "

Fragrans. 2 inch pots, \$1.25 per doz; \$10.00 per 100.

Ferrea. Dark, coppery-bronze foliage. 3 inch pots, \$2.00 per doz.; \$15.00 per 100.

Imperialis. Foliage green, changing to rose with white edge.

3 inch pots, 30 cts. each; \$3 00 per dozen.
4 " " 40 " " 4 00 "
5 " " 50 " " 6 00 "

Gracilis. Graceful narrow-leaved sort; bright green, with coppery-crimson edge. 3 inch pots, 30 cts. each; \$3.00 per dozen.

Lindenii. 6 inch pots, \$1.00 each.

Massangeana. 6 inch pots, \$1.00 each.

Sanderiana. An entirely distinct species, with thick-textured, narrow leaves, which are closely set on slender, upright stems, variegated, with silvery white and green bands alternating, and of various widths, the whole surface of the plant being covered with a silvery sheen of bloom. It is altogether different from anything heretofore known in the way of Dracenas. Good young plants, 3 inch pots, 30 cts. each; \$3.00 per dozen.

Terminalis. 2 inch pots, \$1 00 per doz.; \$7 00 per 100.
3 " " 1 25 " 10 00 "
4 " " 3 00 " 20 00 "

Youngi. 4 inch pots, 40 cts. each; \$4 00 per dozen.
5 " " 50 " " 6 00 "



FICUS ELASTICA (RUBBER PLANT).

Ficus Elastica (RUBBER PLANT).

4 in. pots, 10 to 12 in. high, \$4.00 per doz.; \$30.00 per 100.
6 " " 18 to 24 " 9.00 " 75.00 "

Justicea Velutina.

A pretty dwarf, free-flowering species, producing large heads of light pink flowers.

3 inch pots, \$1.25 per doz.; \$8.00 per 100.

Lapageria.

We offer a good lot of plants in 5 inch pots.

Alba, \$3.00 each. Rosea, \$1.50 each.

Laurustinus.

A nice lot of bushy plants of this old favorite greenhouse shrub, which will flower freely next winter.

5 inch pots, 35 cts. each; \$3.50 per dozen.

Macrozamia Elegantissima.

A beautiful Cycad with remarkably fine graceful foliage of a rich deep green color; a handsome plant for table decoration. We offer a limited number of 5 inch pots, bushy plants, about 15 inches high, \$2.00 each.

Marantas.

Makoyana. 3 inch pots, 35 cts. each; \$3.50 per doz.
Zebrina. 6 " " 75 " "
7 " " \$1.00 "

Musa Ensete. (Abyssinian Banana.)

The leaves of this magnificent plant are long, broad and massive, of a beautiful green, with a broad crimson midrib; the plant grows luxuriantly from 8 to 12 feet high, producing a tropical effect.

Strong 5 inch pots, 50 cents each; \$ 5.00 per dozen.
" 6 " \$1.00 " 10.00 "

Otaheite Orange.

Bushy plants, 5 inch pots, 35 cts. each; \$3.50 per dozen.
" " 6 " " 50 " " 5.00 "

10 Hardy Ever-blooming Roses 10

ALL DIFFERENT AND VERY SWEET, ONLY 85c., POSTPAID

Hardy Ever-blooming Rose

Etoile
de
Lyon



Etoile de Lyon.

ETOILE DE LYON (Star of Lyon)—This is undoubtedly the best Pure Yellow Rose for garden planting yet introduced; color is a clear bright golden-yellow, the plant is a strong, robust grower, and quite hardy, both in regard to heat or cold; commences to bloom quickly and continues to bear an abundance of splendid buds and flowers all through the Summer and Fall; is extra large, makes beautiful buds, and is very double and sweet; in every way one of the very best Roses. Price, 10c. each; larger size, 15c. each, postpaid. Two-year size, 30 cts., express.

THE SUNSET is one of the most fragrant and beautiful roses in cultivation; the flowers are of extra large size, fine full form and delightfully perfumed; color, rich coppery yellow, or real old gold, elegantly clouded with dark, ruddy crimson, true sunset tints; robust and vigorous, and a constant bloomer. 15c. each; larger size, 20c., postpaid. Two-year size 30c., express.

DEVONIENSIS (Magnolia Rose)—One of the good old-time favorites, and still a peer among roses. Flowers of lovely creamy-white, with rosy centre, very large and full; one of the very best varieties, of vigorous growth and an abundant bloomer throughout the entire season; desirable also for its ever-delicious fragrance. 15 cts. each; larger size, 20 cts., postpaid. Two-year size, 35 cts. each, by express.

THE QUEEN—A vigorous healthy grower and constant bearer of large, very double roses. Pure snow-white, very sweet and lasting. Undoubtedly the finest and best pure-white ever-blooming rose for general planting in cultivation. 15 cts. each; larger size, 20 cts., postpaid. Two-year size, 30 cts. each, by express.

DOUGLAS—Deep, rich cherry red; large full flowers; very sweet, constant and profuse bloomer. 10 cts. each, larger size, 15 cts., postpaid. Two-year size, 30 cts. each by express.

CHARLES ROVOLLI—Always admired for its splendid buds, which are extra large and elegantly formed, color, creamy-white, tinted with lemon, the centre sometimes rosy blush; profuse bloomer. 10 cts.; larger size, 15 cts., postpaid. Two-year size, 30 cts. each, express.

COMTESSE RIZA DU PARC—A fine all-round rose, valuable for bedding and house culture; strong hardy grower, constant and abundant bloomer, color, a soft rosy crimson, very sweet and very handsome. 10 cts. each; larger size, 15 cts., postpaid. Two-year size, 30 cts. each, by express.

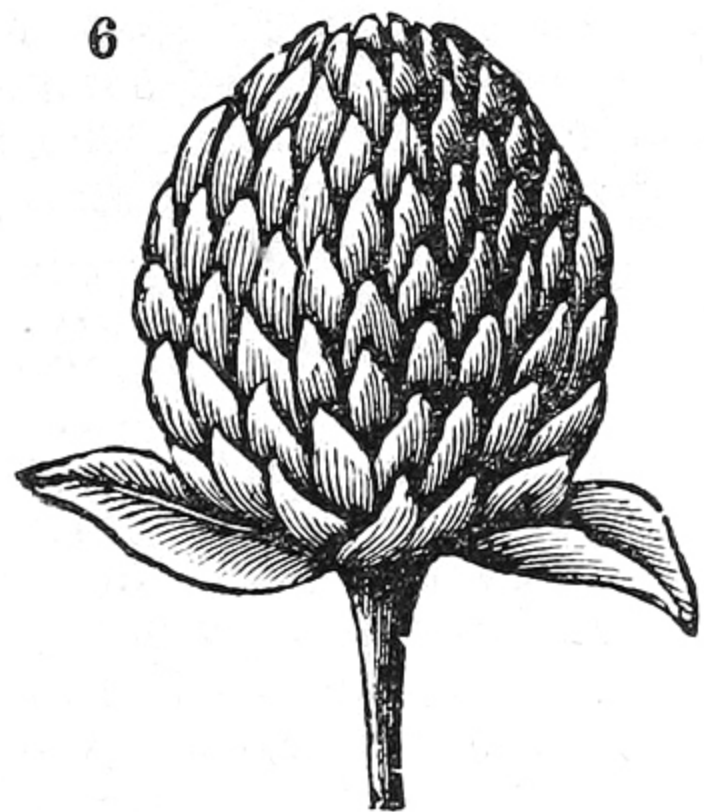
ANNA OLIVER—A superb rose, extra large, very double, full and sweet; color, lovely creamy blush; very beautiful. 10 cts. each; larger size, 15 cts., postpaid. Two-year size, 30 cts. each, by express.

ANDRE SCHWARTZ—Brilliant glowing scarlet, very bright and striking; large, full and sweet; a most constant bloomer. 10 cts. each; larger size, 15 cts., postpaid. Two-year size, 30 cts. each, by express.

ALINE SISLEY—A splendid rose; flowers large and double, fragrance exceedingly sweet; color, fine violet crimson. Fine for open ground. 10 cts. each; larger size, 15 cts., postpaid. Two-year size, 30 cts. each, by express.

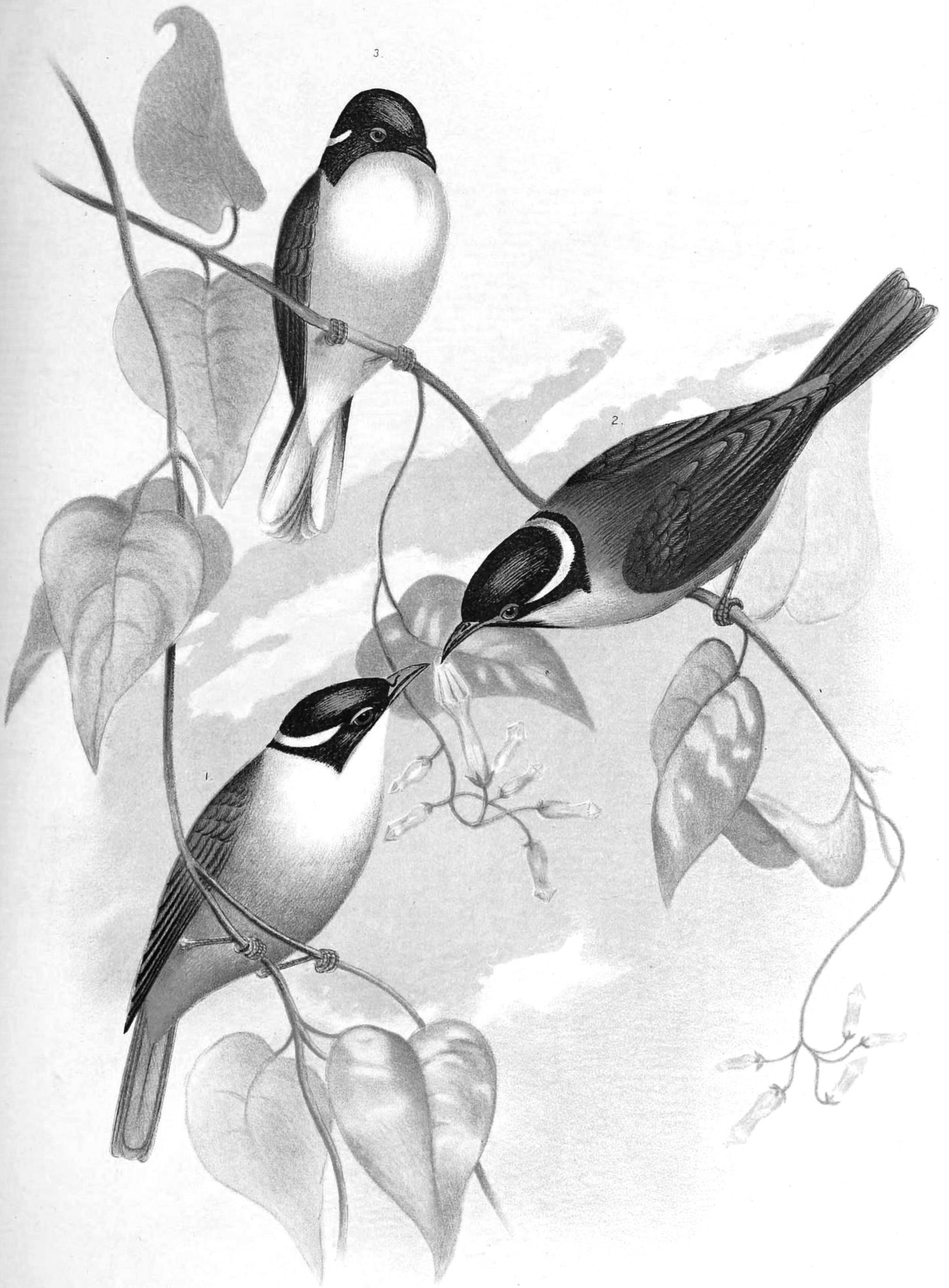
Special Offer

This set of 10 Hardy Ever-blooming Roses, only 85c.
Larger Size, \$1.00, Postpaid. Two-year Size, the
10 for \$2.50, by express.



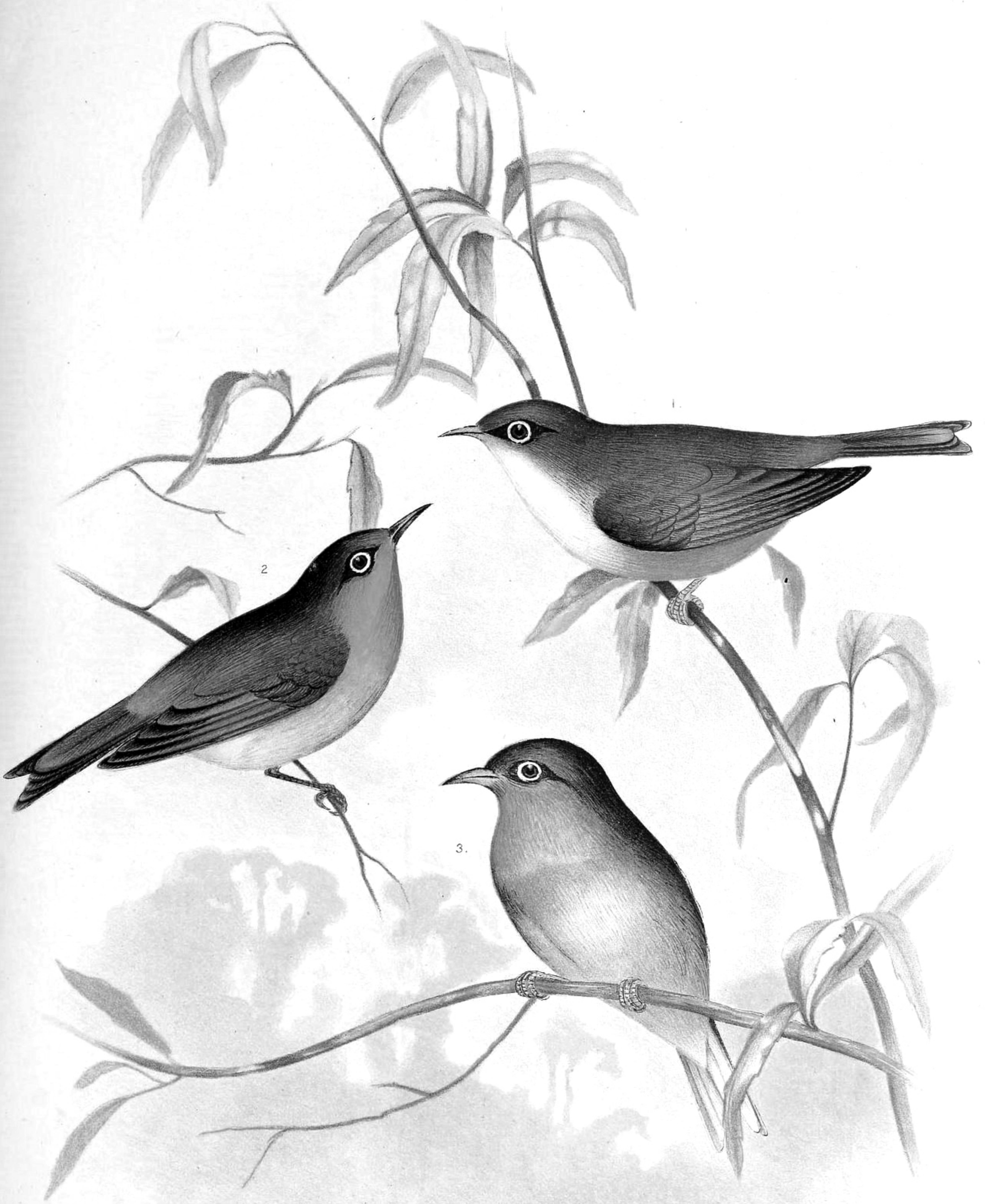
1. XERANTHEMUM.
2. AMMOBIUM ALATUM.
3. HELICHRYSUM.
4. ACROCLINIUM.

5. RHODANTHE.
6. GOMPHRENA.
7. HELIPTERUM SANFORDI.
8. STATICE SINUATA.



G. J. Brönowski, Fecit.

1. MELITHREPTUS VALDIROSTRIS. (Gould). 2. MELITHREPTUS GULARIS. (Gould).
 Strong-billed Honey-eater. Black-throated Honey-eater.
 3. MELITHREPTUS LUNULATUS. (G.R.Gray).
 Lunulated Honey-eater.



G J Brainowski, Fecit

1. ZOSTEROPS ALBOGULARIS (Gould)
White-breasted Zosterops

2. ZOSTEROPS TENUIROSTRIS (Gould)
Slender-billed Zosterops

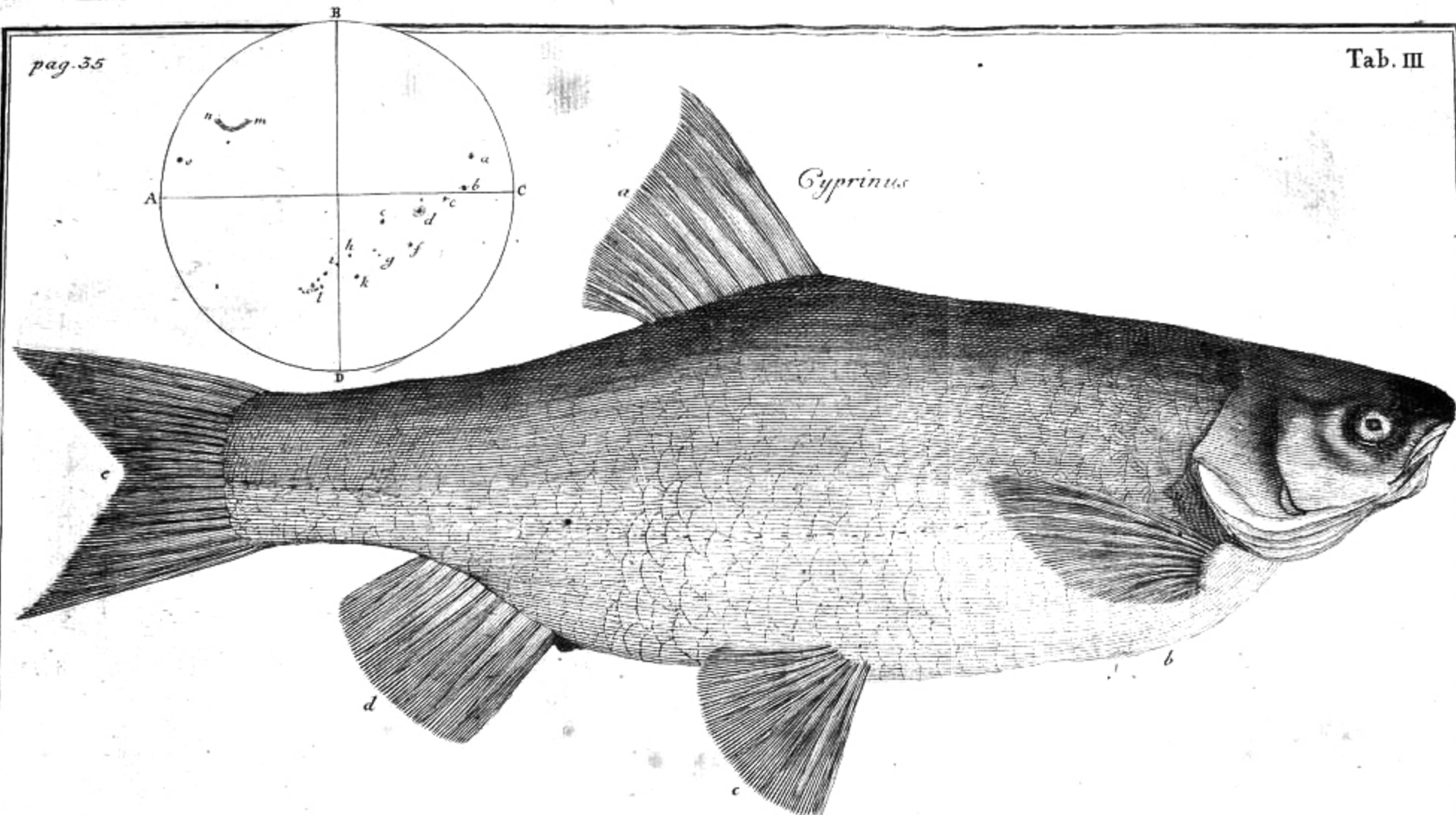
3. ZOSTEROPS STRENUUS (Gould)
Robust Zosterops

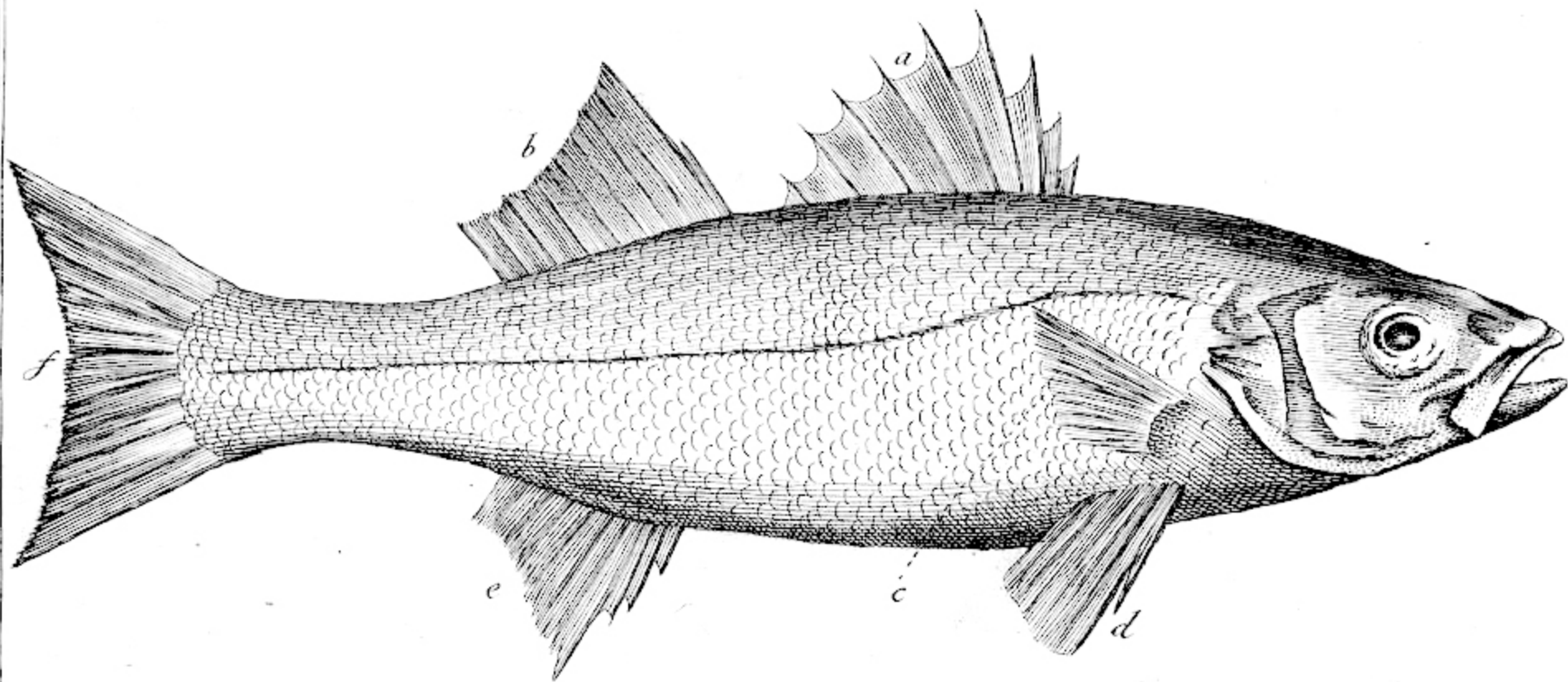


1 MYZANTHA LUTEA (Gould)
Luteous Honey-eater.

2 MANORHINA MELANOPHRYS.
Bell Bird.

G. J. Broinowski, Fag.





New Hardy Evergreen Memorial Rose

Alba Rubifolia

Hybrid of Wichuraiana

(C. & J. Co., 1900)

The Finest Hardy

Memorial Rose - - -

For Cemetery Planting

yet produced

Has NO equal

THIS is a cross between **Wichuraiana** and **Coquette de Lyon**, and, as the flowers are pure white and much of the foliage and young growth bright red, it is appropriately named, **Alba Rubifolia**.

When trained up to post or pillar it soon makes a beautiful weeping rose, or if left alone will form a broad natural bush of great beauty. It is evergreen and retains its foliage all winter which adds greatly to its beauty. Its round thick leaves are so bright and glossy, they shine as if varnished. The flowers are large and fragrant, perfectly full and double to the centre, and borne in great profusion for weeks at a time.

Finest
of all, for
Cemetery
Planting.

New Hardy Memorial Rose, Alba Rubifolia.

It is entirely hardy, needs no protection, always looks bright and cheerful, and is undoubtedly the finest memorial rose, for Cemetery Planting, yet introduced. Good Mailing Plants, 25c. each; \$2.50 per doz., postpaid. Two-year size, 40c. each \$4.00 per doz. Extra size, three-year bushes, 60c. each; \$5.50 per doz., by express.

New Double White Hardy Climbing Rose---The Royal Cluster

Blooms in enormous clusters, 119 flowers and buds have been counted in one cluster at one time. The flowers are medium size quite double, and give out a rich, spicy fragrance, very pleasing and attractive. Recommended as the best double pure white hardy climbing rose to date. Strong Mailing Plants, 15 cts.; 2 for 25 cts.; \$1.25 per dozen, postpaid. Two-year size, 30 cts. each; \$2.50 per dozen, by express. Large three-year Field Grown Dormant Bushes, 50 cts. each; \$5.00 per dozen, by express.

Three New Hardy Creeping Roses

These pretty varieties are hybrids of the Wichuraiana Roses, and creep flat on the ground; they are much used for covering banks, mounds and terraces, in lawns and cemeteries; the foliage is bright and handsome and the flowers are very beautiful.

EVERGREEN GEM—Pretty buff yellow flowers, two to three inches in diameter, perfectly double, with a rich sweet briar fragrance, 20 cts.; \$1.75 per dozen. Two-year size, 40 cts. each; \$3.50 per dozen, by express.

GARDENIA—Buds bright yellow, open flowers lovely cream color, three to four inches in diameter, delightfully fragrant. 20 cts. each; \$1.75 per dozen. Two-year size, 40 cts. each, \$3.50 per dozen, by express.

JERSEY BEAUTY—Elegant single flowers, three inches in diameter, pale yellow, very fragrant, and a tremendous bloomer. 20 cts.; \$1.75 per dozen. Two-year size, 40 cts. each; \$3.50 per dozen, by express.

For Other Memorial Roses,
see page 31.

The **3** Varieties for 50 cts.; 4 each, 12 for \$1.75, postpaid. Two-year bushes, the 3 for \$1.00; \$3.50 per dozen, by express.

10 Choice Selected Ever-blooming Roses 10

GOOD GROWERS FREE BLOOMERS BRIGHT DISTINCT COLORS

PERLE DES JARDINS—Not new, but one of the most beautiful deep Yellow Roses in existence. Makes grand buds, and the open flowers are extra large, perfectly double and deliciously sweet; the color is pure rich Golden Yellow, the plant is a healthy grower, an early and constant bloomer. Does well in open ground, and is one of the most valuable for forcing for cut flowers. 10 cts. each; larger size, 15 cts., postpaid, two-year size, 30 cts., by express.

MME. LUCIEN LINDEN—A charming new Rose, large pointed buds, and large double well-filled flowers; color lovely golden blush, shaded yellow, bright nasturtium red centre, very beautiful, a strong vigorous grower with handsome foliage. 15 cts. each; larger size, 20 cts., postpaid; two-year size, 35 cts., by express.

WHITE BOUGERE—A grand new Rose of great depth and substance, rich creamy white, and very sweet; makes beautiful buds. Similar to Bougere in every way except color. A valuable acquisition to our White Tea Roses. It is a strong vigorous grower and free-bloomer. 15 cts. each; larger size, 20 cts., postpaid; two-year size, 35 cts. each, by express.

MAD. RENE GERARD—A lovely new Ever-blooming Rose of rare and exquisite beauty; large full flowers, and long pointed buds; deep, coppery-yellow, passing to fine Nasturtium red, delicately shaded with crimson and rose.

A new and very beautiful combination of charming colors not often seen. A good healthy grower and a constant bloomer; extra fine. 15 and 20 cts. each, postpaid; two-year size, 35 cts., by express.

MARIE GUILLOT—A pure snowy-white Rose; large and full flowers, a constant bloomer, one of the best for planting in the open ground; always in bloom; and always satisfactory. 10 cts. each,

larger size, 15 cts.; two-year size, 30 cts. by express.

QUEEN'S SCARLET—A rich velvety scarlet, very bright and handsome, strong, upright grower, hardy and vigorous; blooms constantly all Summer and Fall. 10 cts. each; larger size, 15 cts., postpaid; two-year size, 30 cts., by express.

SOUV. DE J. B. GUILLOT—An extra fine new Tea Rose of a new and very brilliant color, which varies from a bright, coppery red, according to season and temperature. Flowers are large, full and very sweet. It is a free and constant bloomer, and promises to be valuable acquisition. 15 cts. each; larger size, 20 cts. each, postpaid; two-year size, 35 cts., by express.

BARONNE BERGE—Well described as a most lovely Rose, large, full flowers, very double and sweet; color, bright rosy red, with clear golden-yellow centre, very full and continuous bloomer; plants begin to bloom while very young; grand for bedding, very bright and sweet scented. 10 cts. each; larger size 15 cts. each, postpaid; two-year size, 30 cts. each, by express.

MAD. MARTHA DUBERGE—Extra large finely formed buds, large and full flowers, color, delicate cream pink, elegantly flushed with rose; very sweet. A neat compact grower and constant bloomer; very beautiful. 10 cts. each, larger size, 15 cts., postpaid; two-year size, 30 cts., by express.



Perle des Jardins.

FÜRSTIN HOHENZOLLERN—New, attractive and very rare; color, exquisite lilac rose, on ochre ground; a fascinating combination seldom seen; has a delightful but delicate fragrance. A vigorous grower and good bloomer. 15 cts. each; larger size, 20 cts., postpaid.

SPECIAL OFFER

This Set of 10 Choice Ever-Blooming Roses, only 95 cts.; Larger Size, \$1.30, Postpaid. Two-year Size, \$2.50, Packed to Express here.

NOTE—WE PAY ALL POSTAGE ON ROSES AND PLANTS SENT BY MAIL, but when sent by Express, the purchaser pays the Express Charges. Two-year Roses should always go by Express, unless to very distant points, as we can send larger and better plants in this way, and when packed with the tops on and some earth on the roots, they arrive in the best condition to grow and bloom quickly.



G.J. Brinowski, Fecit

1. MYZANTHA GARRULA (Vig & Horsf.)
Garrulous Honey-eater.

2. MYZANTHA OBSCURA (Gould).
Sombre Honey-eater.



1. MELITHREPTUS CHLOROPSIS (Gould).
Swan River Honey-eater

3. MELITHREPTUS MELANOCEPHALUS (Gould).
Black-headed Honey-eater

2. MELITHREPTUS ALBOGULARIS (Gould).
White-throated Honey-eater

4. NECTARINIA AUSTRALIS (Gould).
Australian Sun-bird

G.J. Bronowski, Fecit

Princess Bonnie

The
New
Hardy
Ever-
bloom-
ing
Rose....



Our... Princess Bonnie Set

PRINCESS BONNIE is highly recommended as one of the best Hardy Constant-blooming Roses ever grown. The flowers are extra large and full, perfectly double, and deliciously sweet; the color is solid, rich crimson, exquisitely shaded; a constant and abundant bloomer, loaded with flowers the whole season; a hardy, vigorous grower, and one of the sweetest and most beautiful ever-blooming Roses you can possibly have. **Strong plants, 15 cts. each; larger size, 20 cts., postpaid. Two-year size, 35 cts., by express.**

ENCHANTRESS—A noble Rose of finest quality. Cream-white, richly tinted with rose buff. Large, full, globular flowers; a free and constant bloomer; fine for open ground, also for pot culture, conservatories, etc. An excellent Fall and Winter bloomer. **15 cts.; larger size, 20 cts., postpaid. Two-year size, 35 cts.**

MAD. ETIENNE—Extra large, full, sweet flowers; rich, creamy-white, elegantly tinted with blush. **10c. each; larger size, 15c., postpaid. Two-year size, 30c., express.**

LETTY COLES—A most handsome flower, with its soft, rosy-pink petals, richly shaded with deep crimson; delightfully sweet, tea fragrance. An abundant bloomer, too; large, double flowers of a deep, globular form, and borne on strong, stiff stems; in fact, one of the strongest and finest growing roses in its class. **10 cts. each; larger size, 15 cts., postpaid. Two-year size, 30 cts., by express.**

LUCIOLE—Fine, large, full flowers, very double and sweet; dark, rich, violet red. A strong, robust grower and abundant bloomer. Very handsome and desirable. **10 cts. each; larger size, 15 cts. Two-year size, 30 cts., each, by express.**

COQUETTE DE LYON or YELLOW HERMOSA—Pure, rich, canary yellow, blooms very quickly and profusely; a neat, compact grower, one of the finest for bedding. **10 cts. each; larger size, 15 cts. Two-year size, 30 cts., each, by express.**

BON SILENE—Noted for the great size and beauty of its buds; bright, rich, rosy crimson; good for open ground and house culture. **10c., larger size, 15c. Two-year size, 30c., by express.**

RUBY GOLD—One of the newer Roses of great beauty. Elegant, large flowers, colored with rich, sunset tints of red, orange and gold; very showy and handsome, and a free bloomer. Resembles Sunset, and greatly admired. **10 cts.; larger size, 15 cts. Two-year size, 30 cts., each, express.**

WHITE HERMOSA—Rich, creamy white flowers, and beautiful, snowy buds; low, compact grower always in bloom. Extra fine for bedding. **10c., larger size, 15c. Two-year size, 30c., express.**

Special Offer. Our **PRINCESS BONNIE** Set 9 New and Beautiful Ever-blooming Roses, only 75 cts.; larger size, the set of 9 for \$1.10. Two-year size, the 9 packed to express here for \$2.25.

Princess Bonnie.

TEN CHOICE GARDEN ROSES FOR SIXTY-FIVE CENTS.

MARIE GUILLOT. White.
QUEEN'S SCARLET. Rich Scarlet.
ETOILE DE LYON. Best Hardy Yellow, Everbloomer.

HERMOSA. Bright Pink; hardy.
MADAME WELCHE. Peach-yellow.
GOLDEN GATE. Cream and Gold.
CLOTILDE SOUPERT. Amber Rose,

LUCULLUS. Rosy Crimson.
THE BRIDE. Pure white.
CAPT. LE FORT, Rich Crimson; fragrant and beautiful.



1 ZOSTEROPS CÆRULESCENS. Grey-backed Zosterops. 2 ZOSTEROPS LUTEUS, (Gould) Yellow Zosterops. 3 ZOSTEROPS GOULDI, (Bonap) Green-backed Zosterops. 4 ZOSTEROPS TEPHROPLEURUS, (Gould) Grey-breasted Zosterops. 5 DICÆUM HIRUNDINACEUM. Swallow Dicæum.

C. J. Broinowski, Fecit.



1 PTILOTIS FLAVA (Gould)
 Yellow Honey-eater.
 3 PTILOTIS FUSCA (Gould)
 Fuscous Honey-eater.

2 PTILOTIS PENICILLATA (Gould)
 White-plumed Honey-eater.
 4 PTILOTIS CASSIDIX (Jard)
 Helmeted Honey-eater.

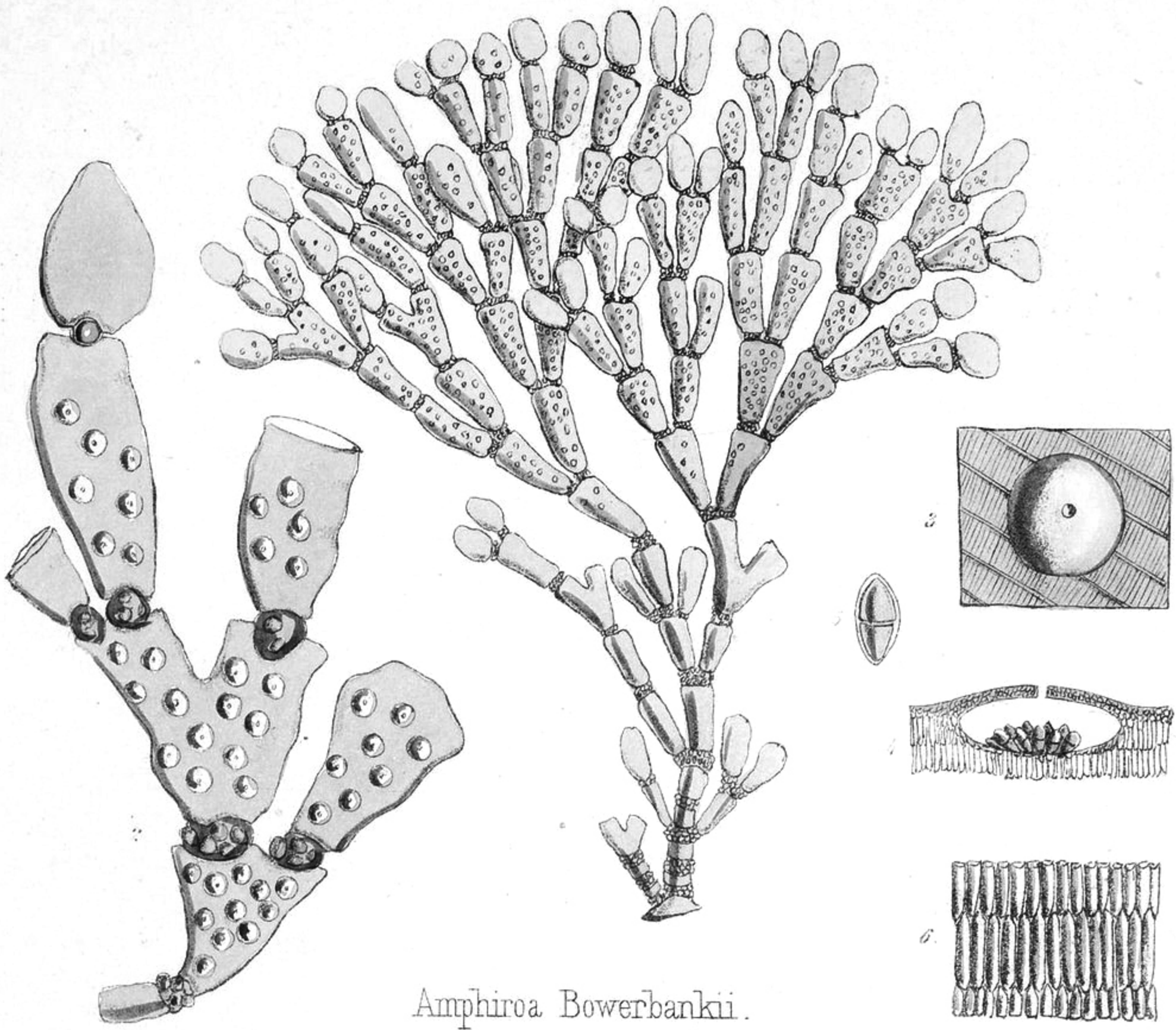
G. J. Brinowski Febr.



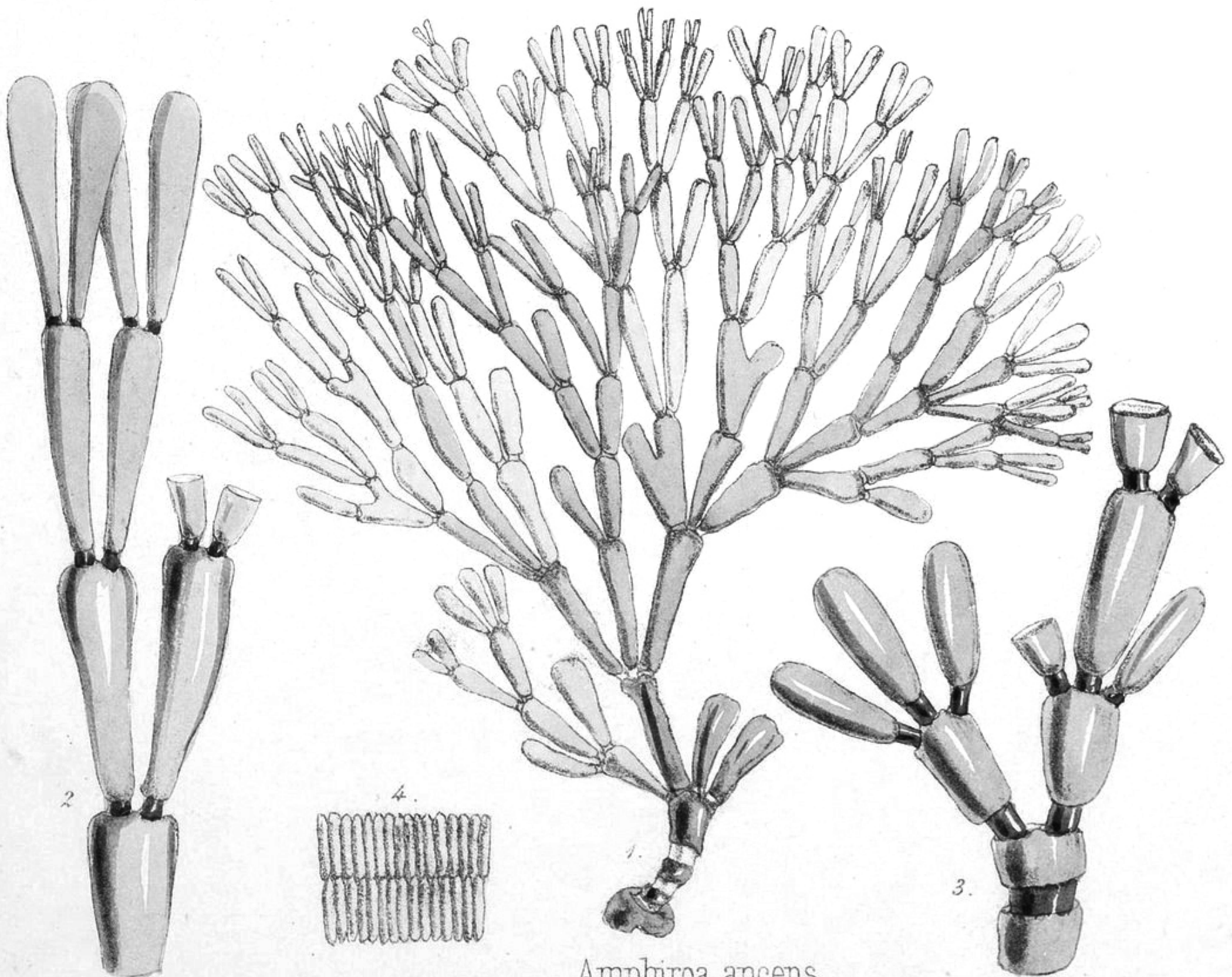
G. J. Bronowski, fecit

1 ENTOMYZA CYANOTIS. (Swains)
Blue-faced Honey-eater

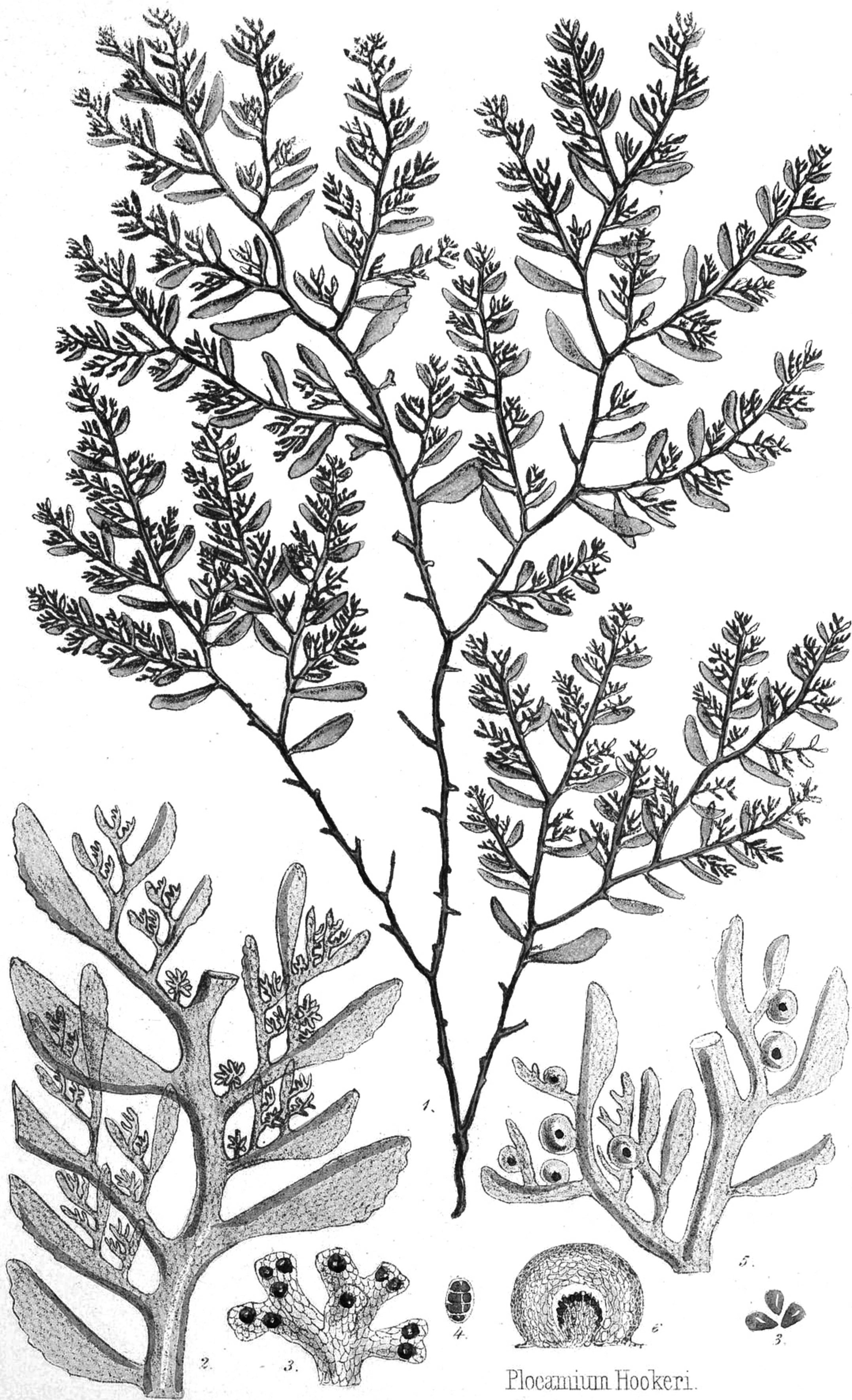
2 ENTOMYZA ALBIPENNIS. (Gould)
White-quilled Honey-eater



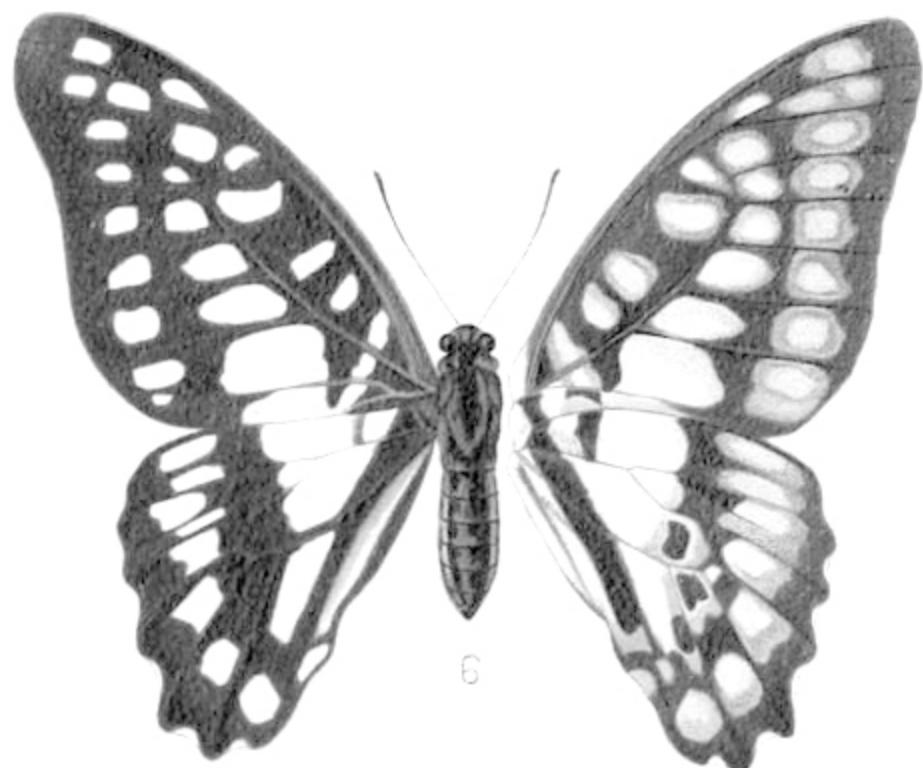
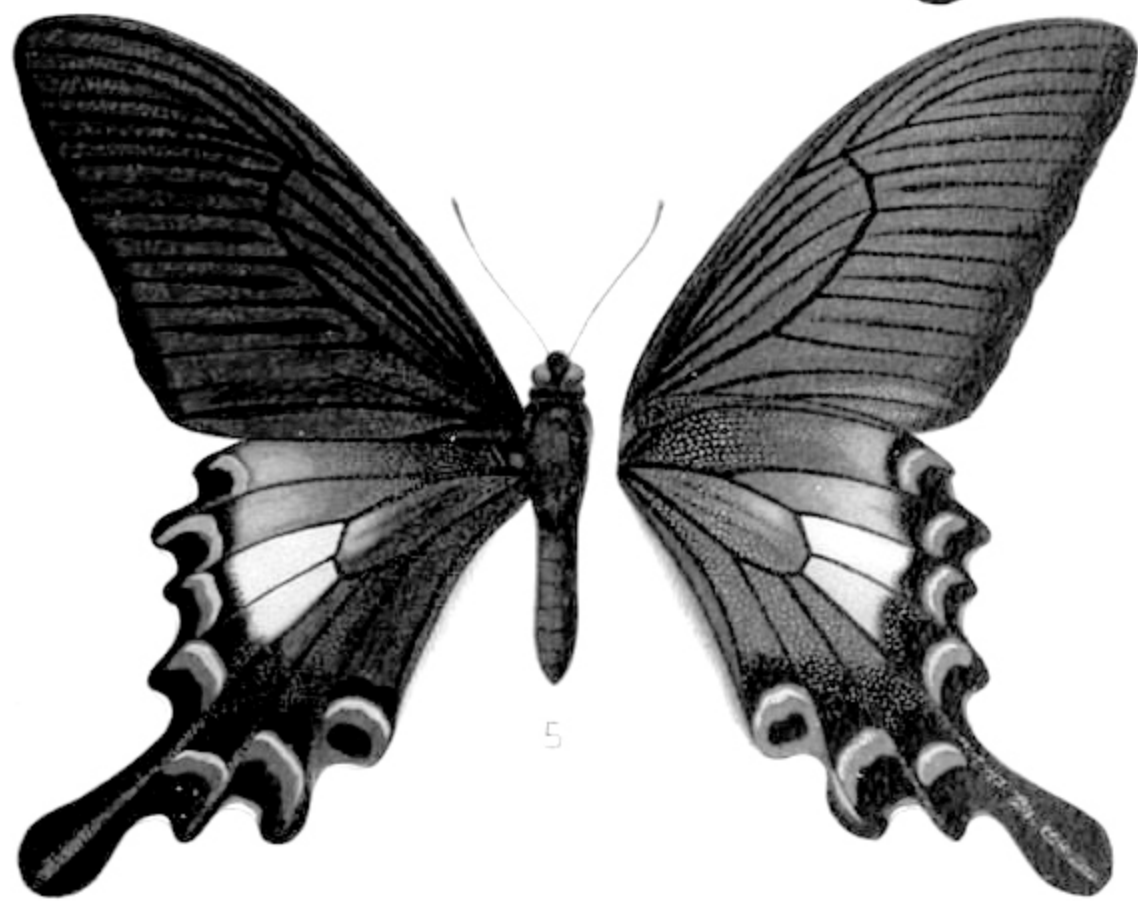
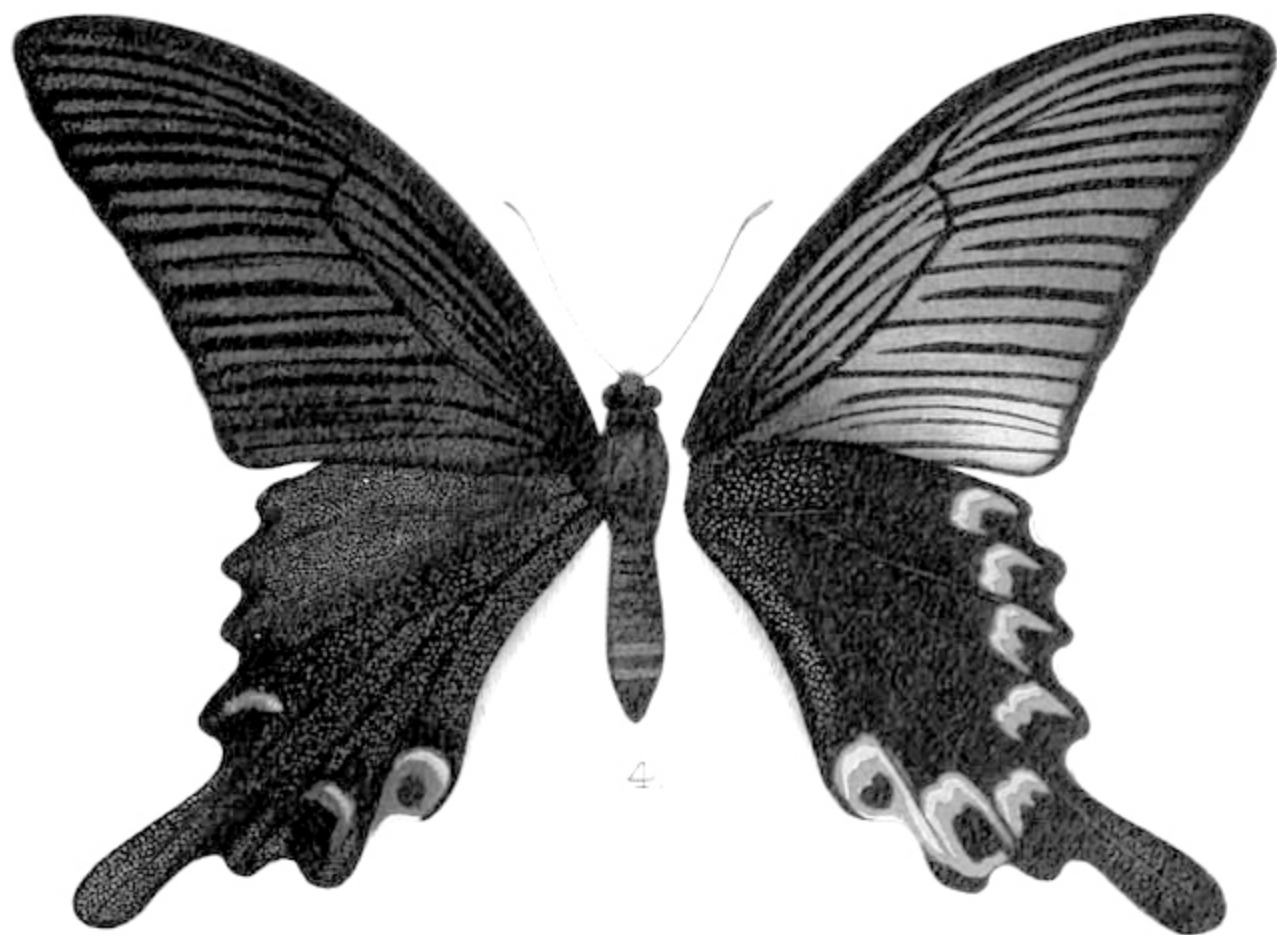
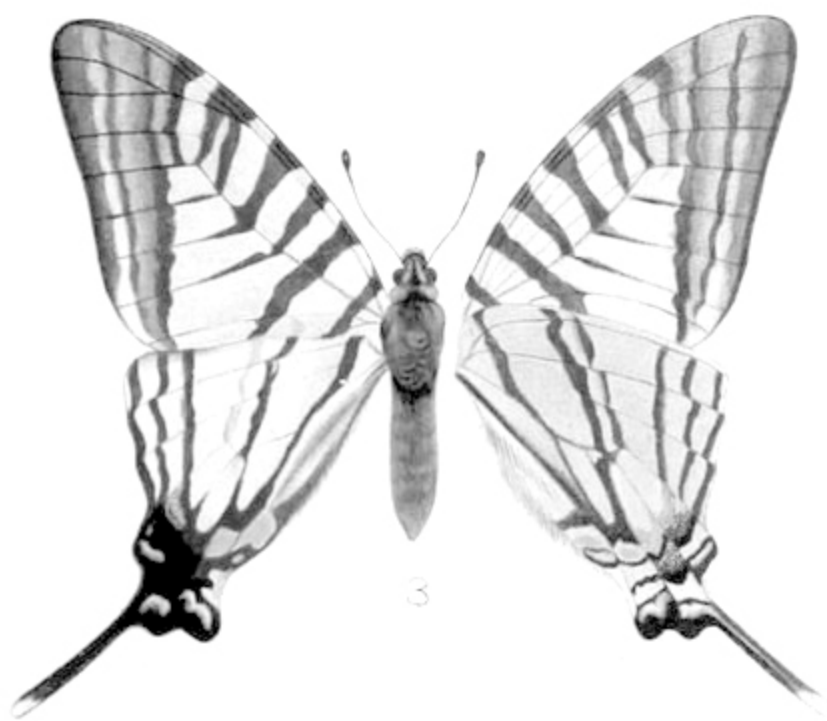
Amphiroa Bowerbankii.

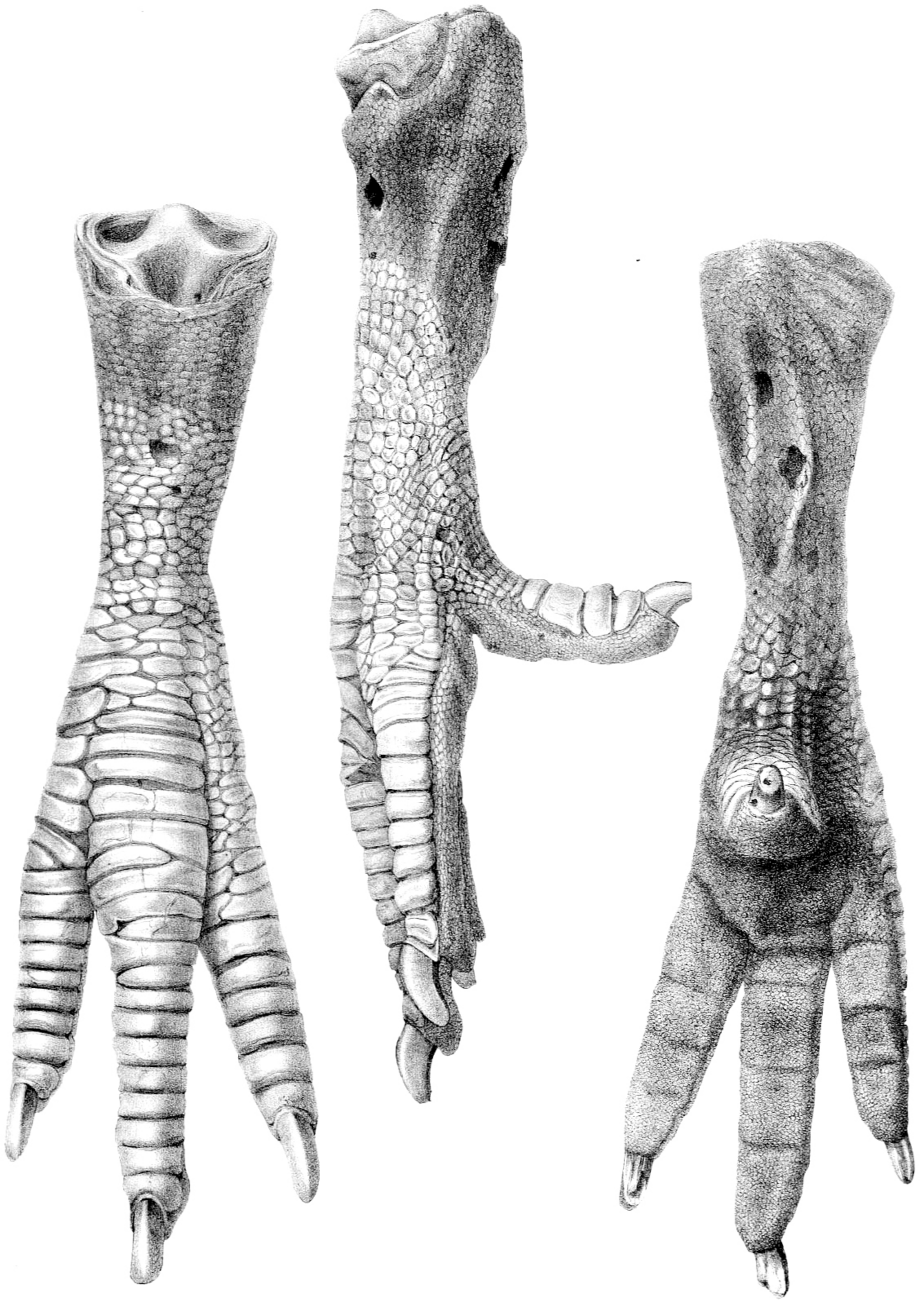


Amphiroa anceps.



Plocamium Hookeri.

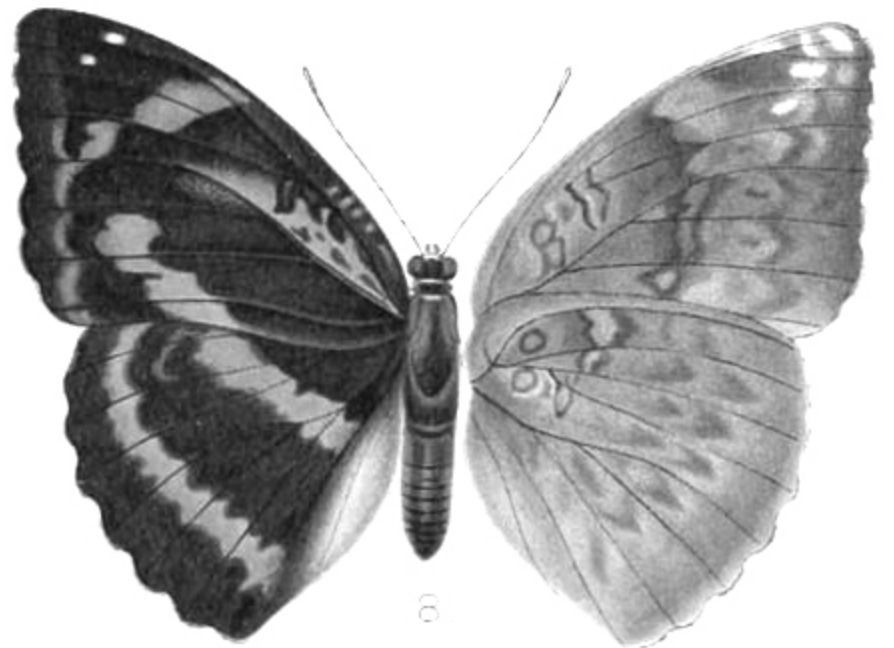
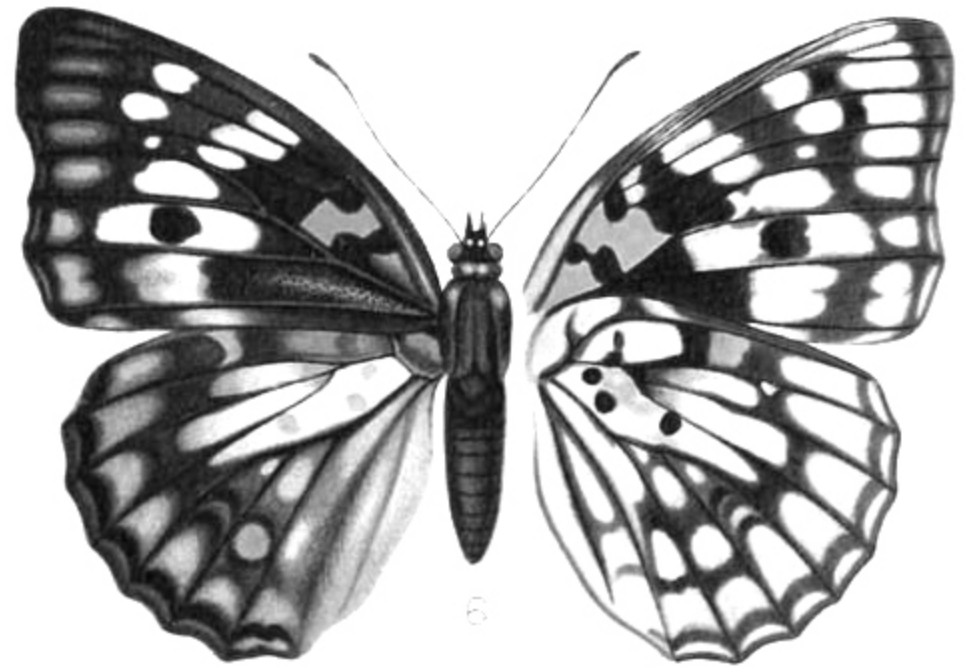
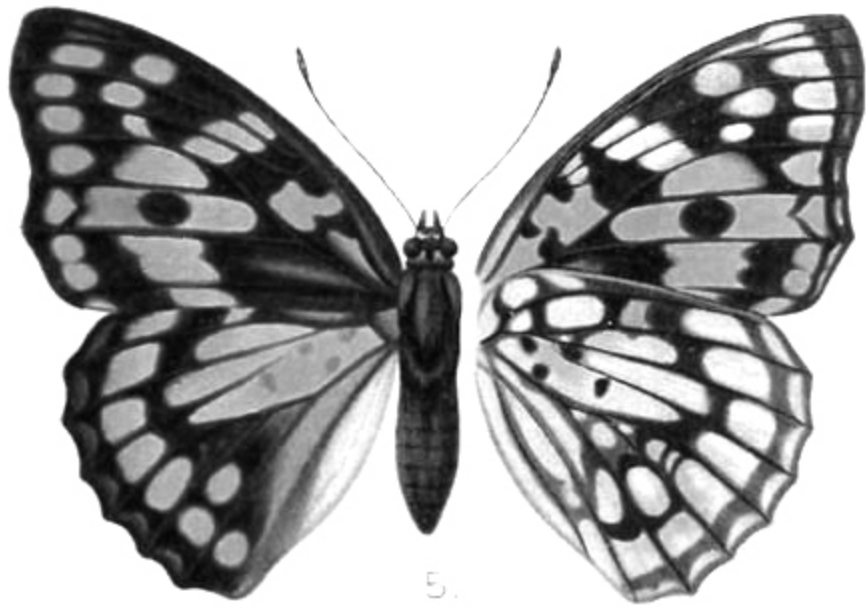
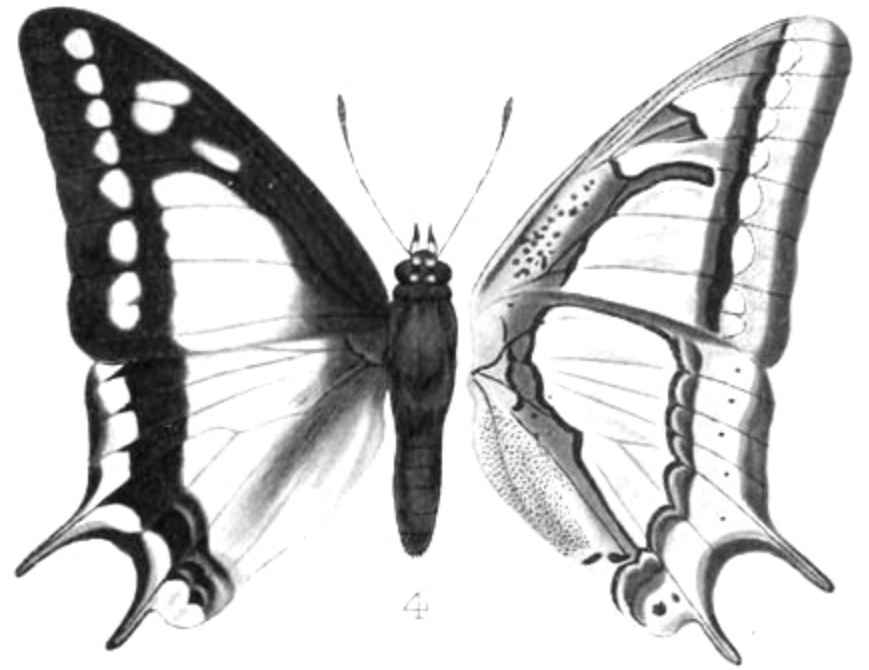
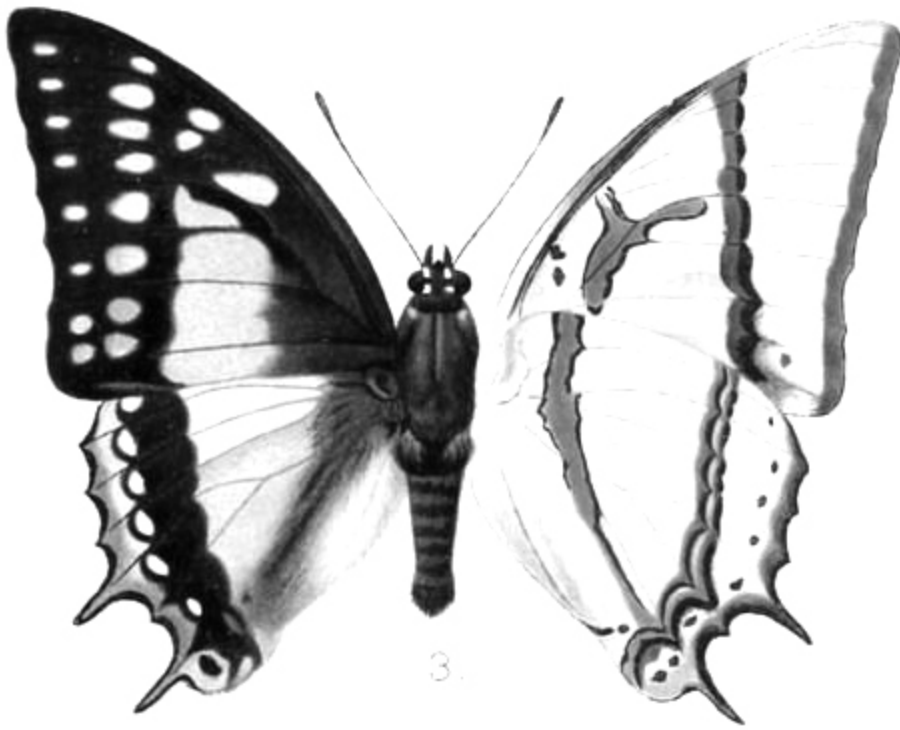
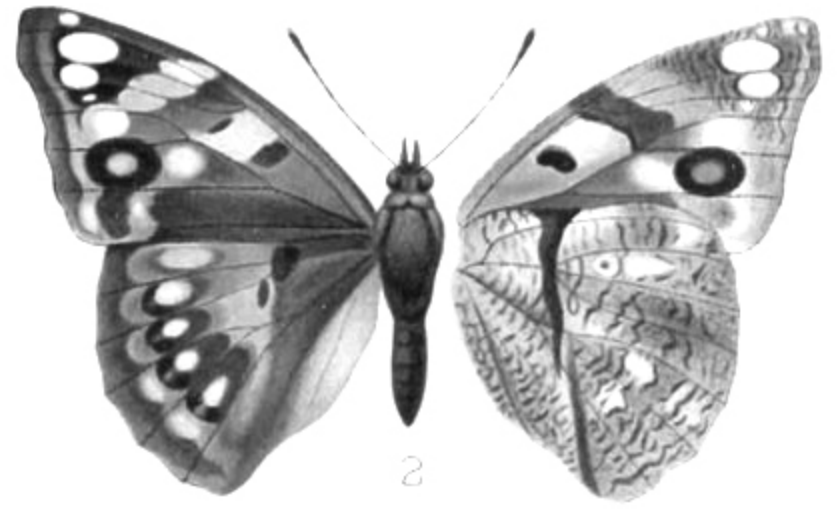
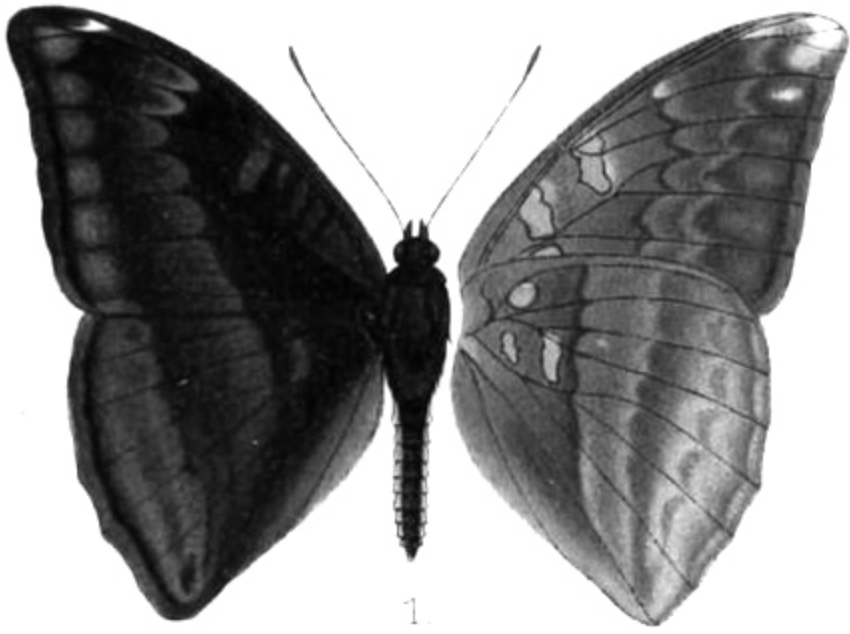


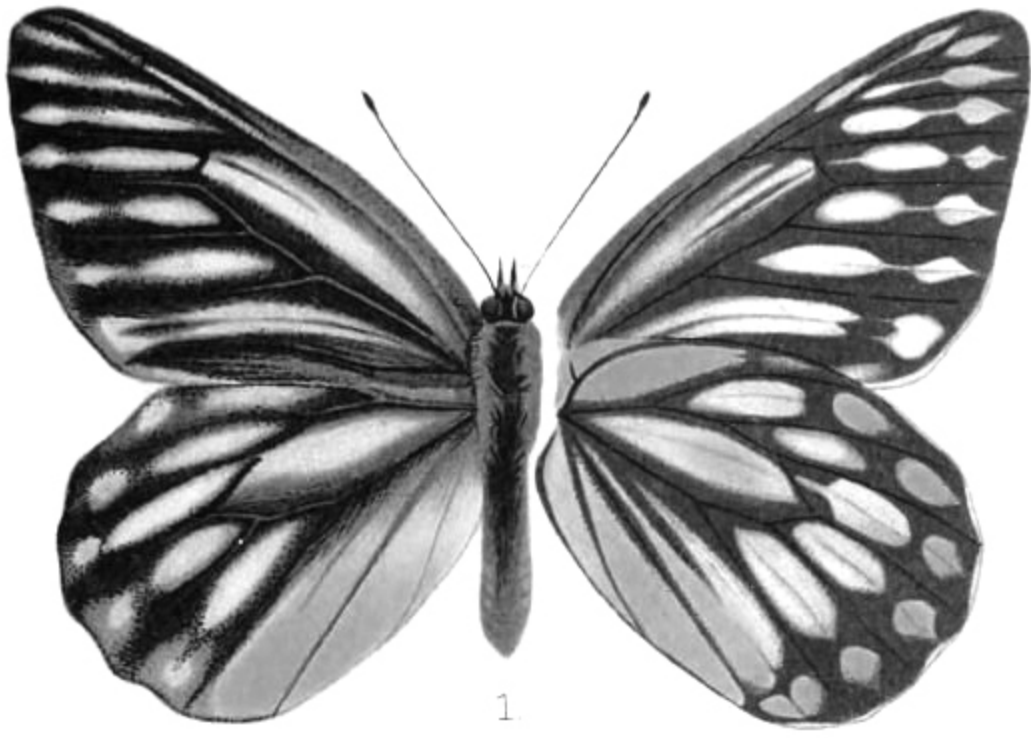


Dinkel del et lith.

DIDIS
ineptus
in Coll. Mus. Brit.

Printed by Hullmandel & Walton





1.



2.



3.



4.



5.

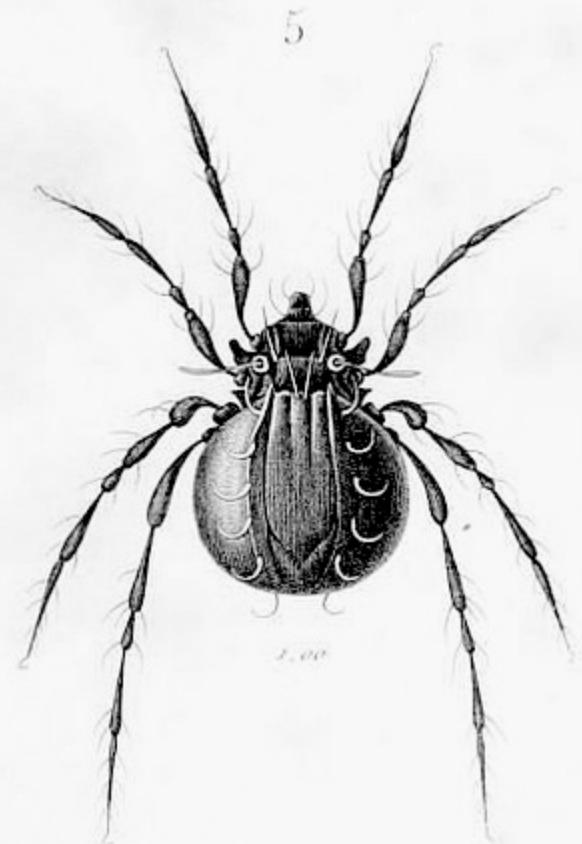
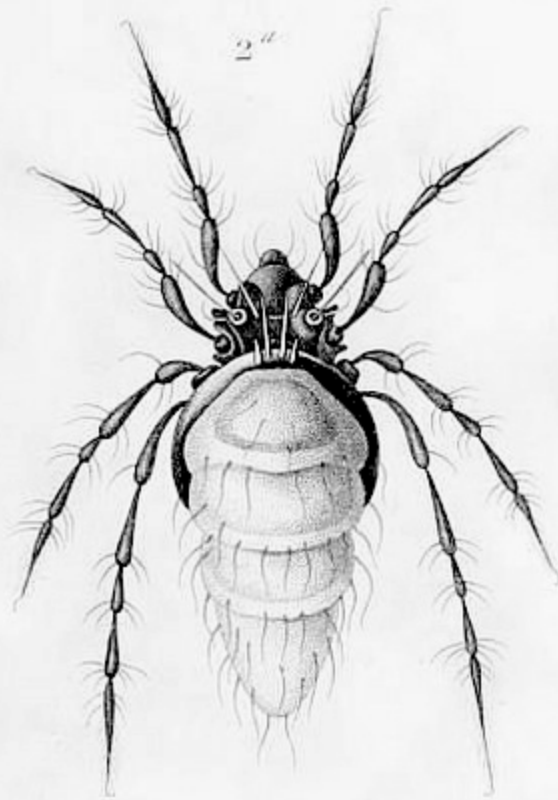
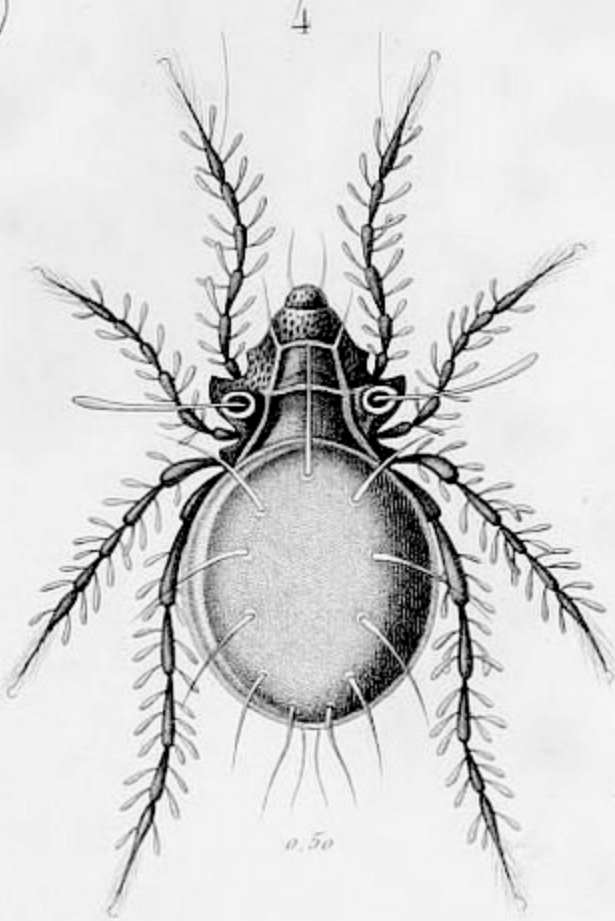
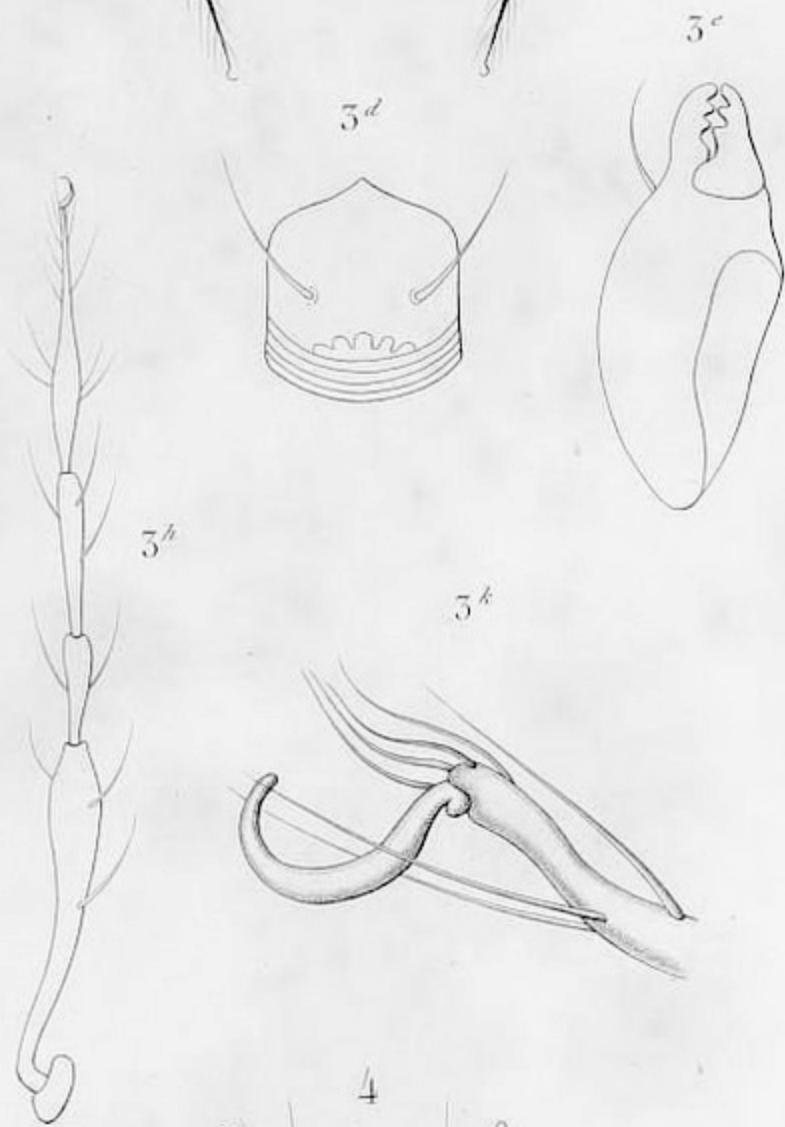
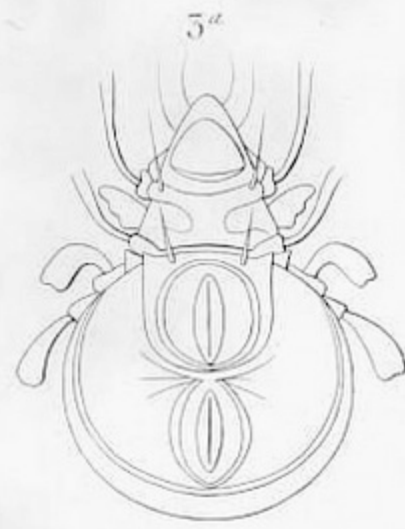
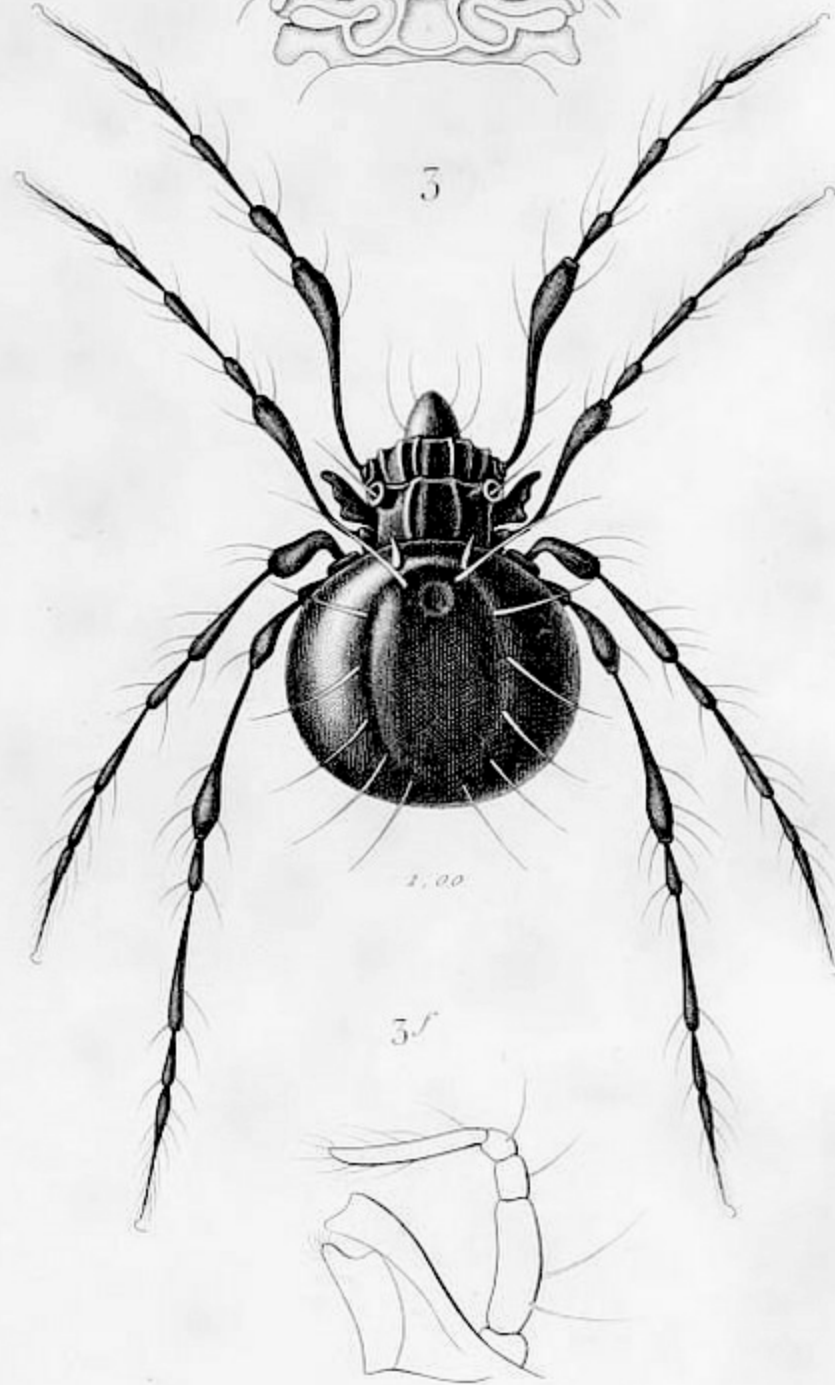
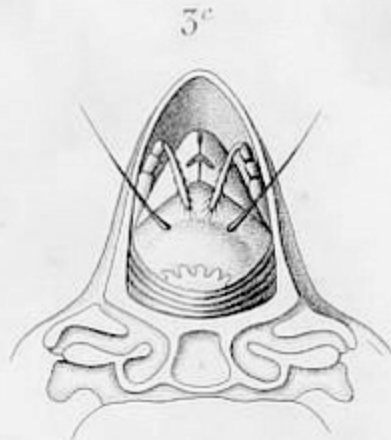
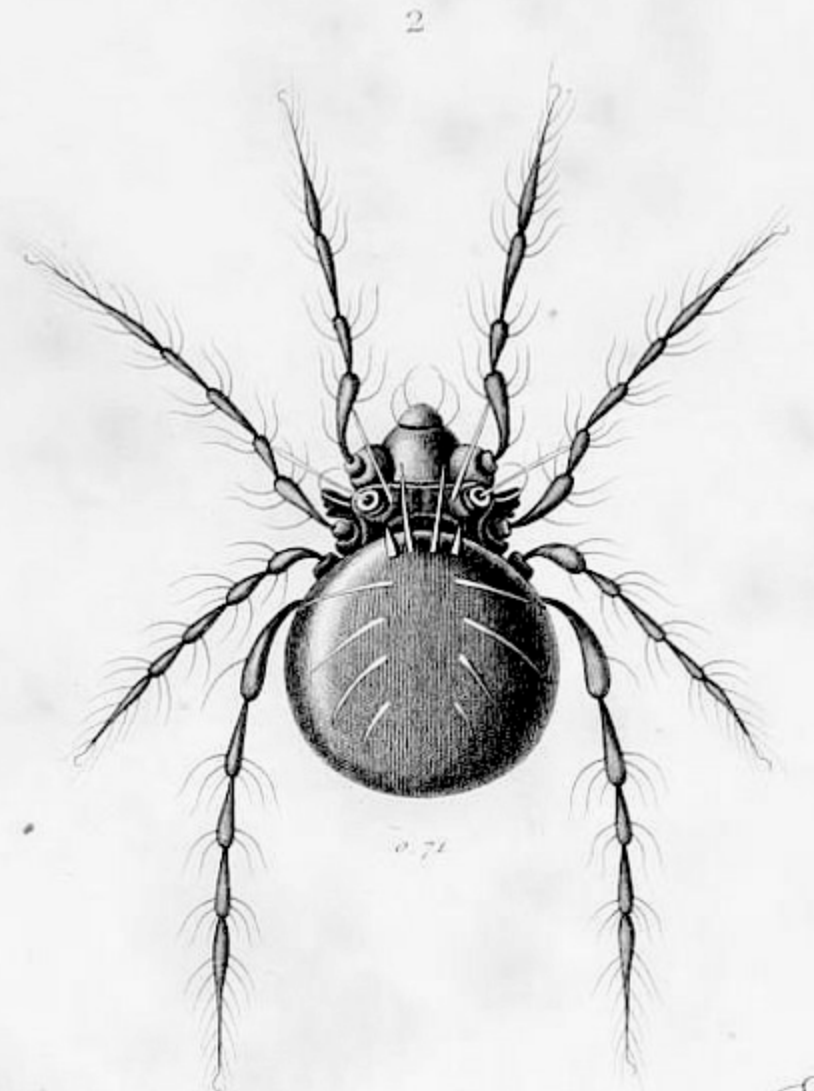
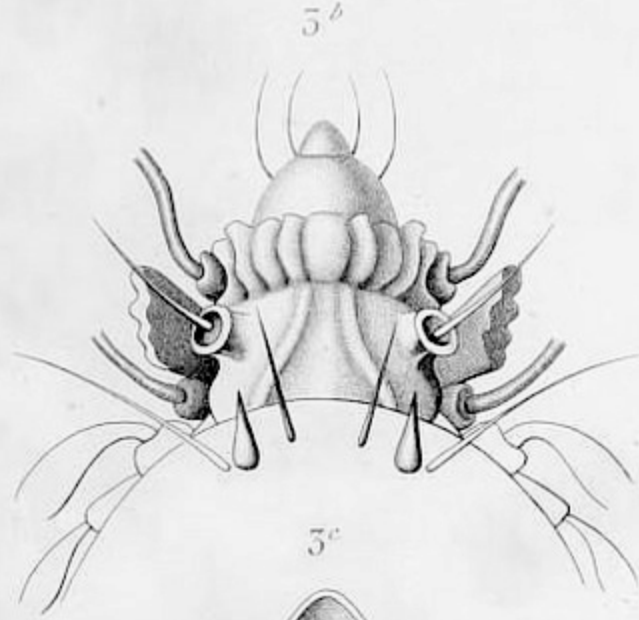


6.



7.

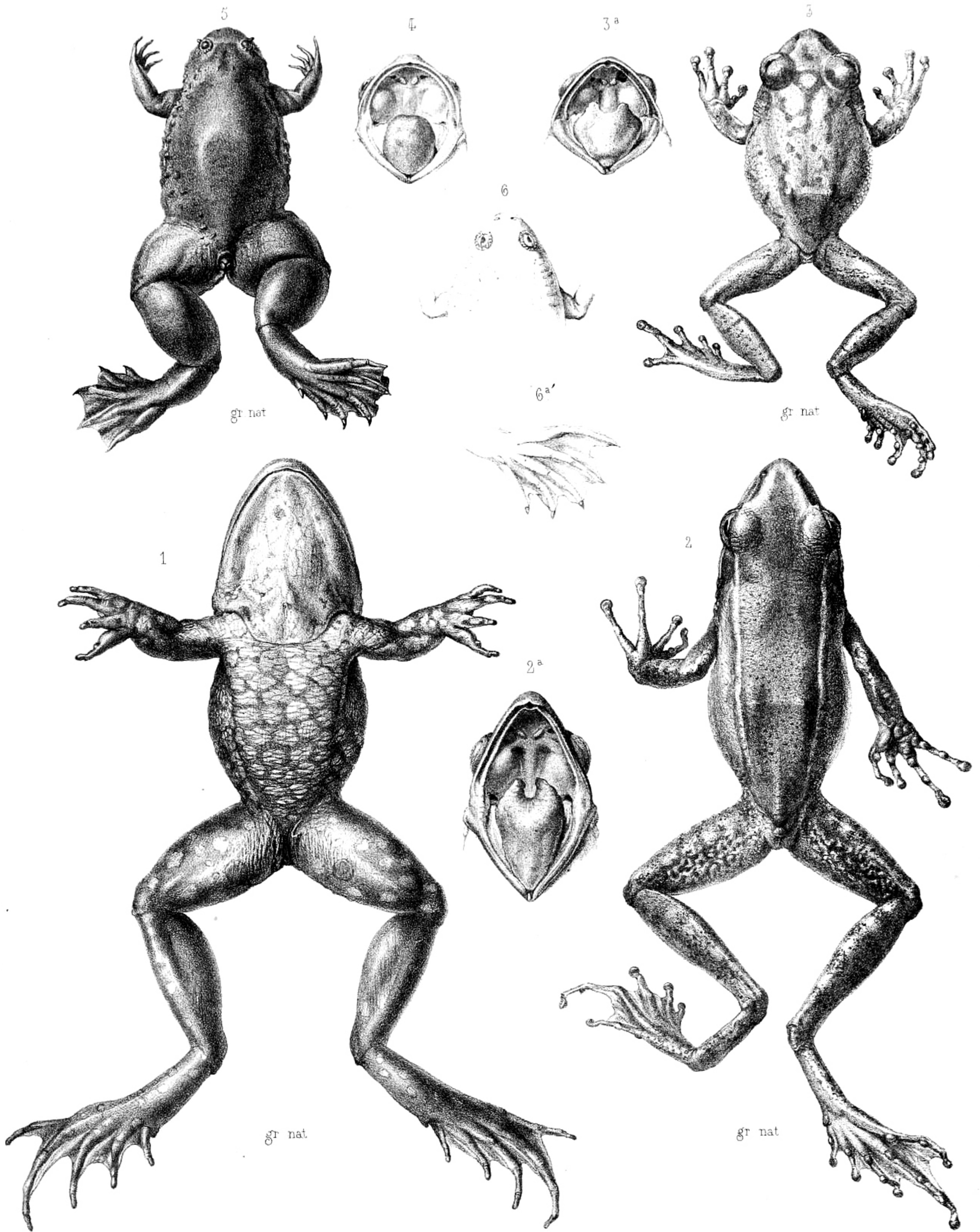
ACARIENS TERRESTRES Pl. 8.



H. Nicolet, ad nat. del.

Lebrun sc.

GENRE DAMCEUS. Koch.

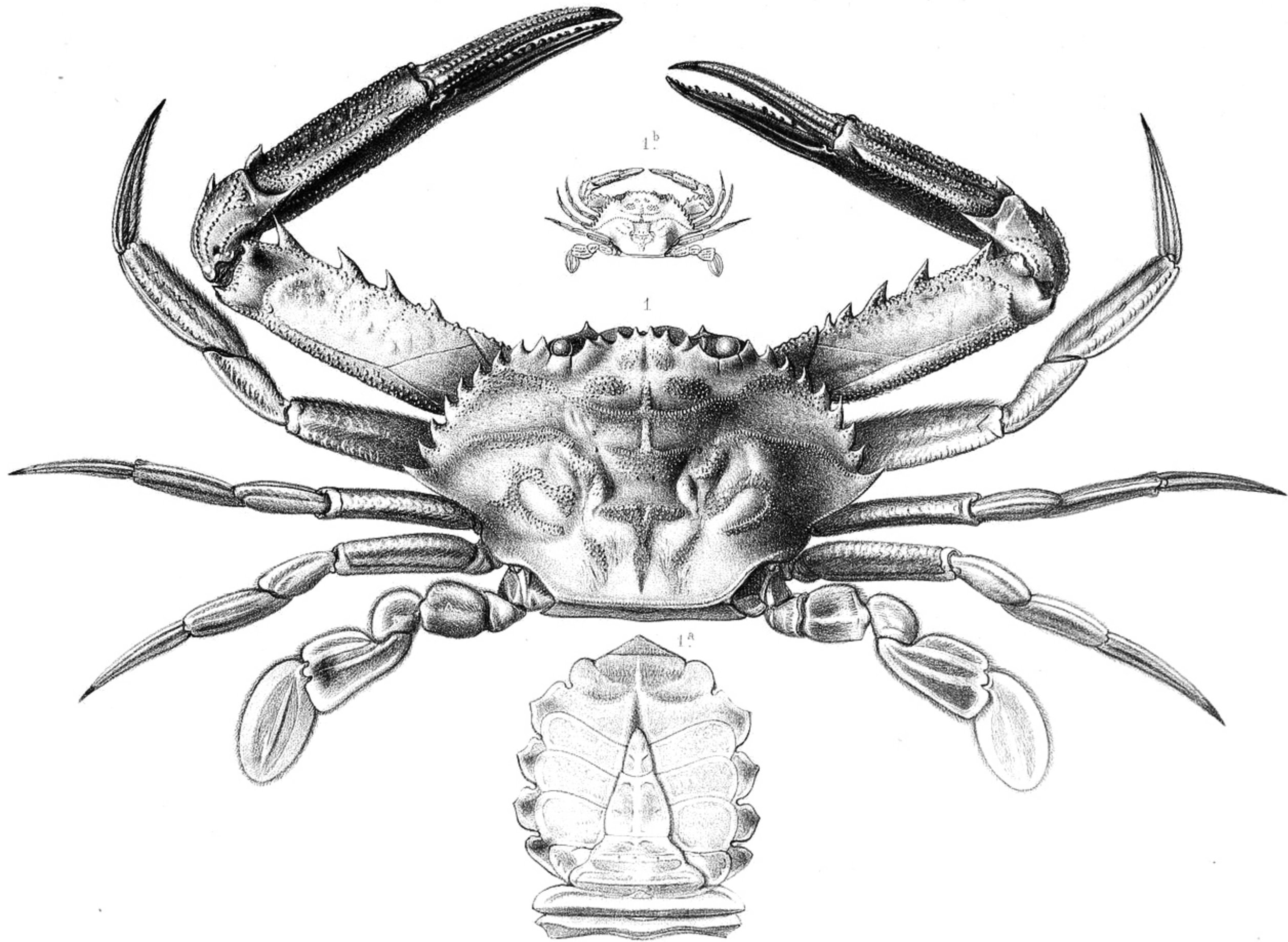


F. Bocourt del et lith.

1. GRENOUILLE TACHETÉE EN DESSOUS. (*SUB-SIGILLATA*) A Dum. 2 2^a LIMNODYTE A LEVRES BLANCHES A Dum.

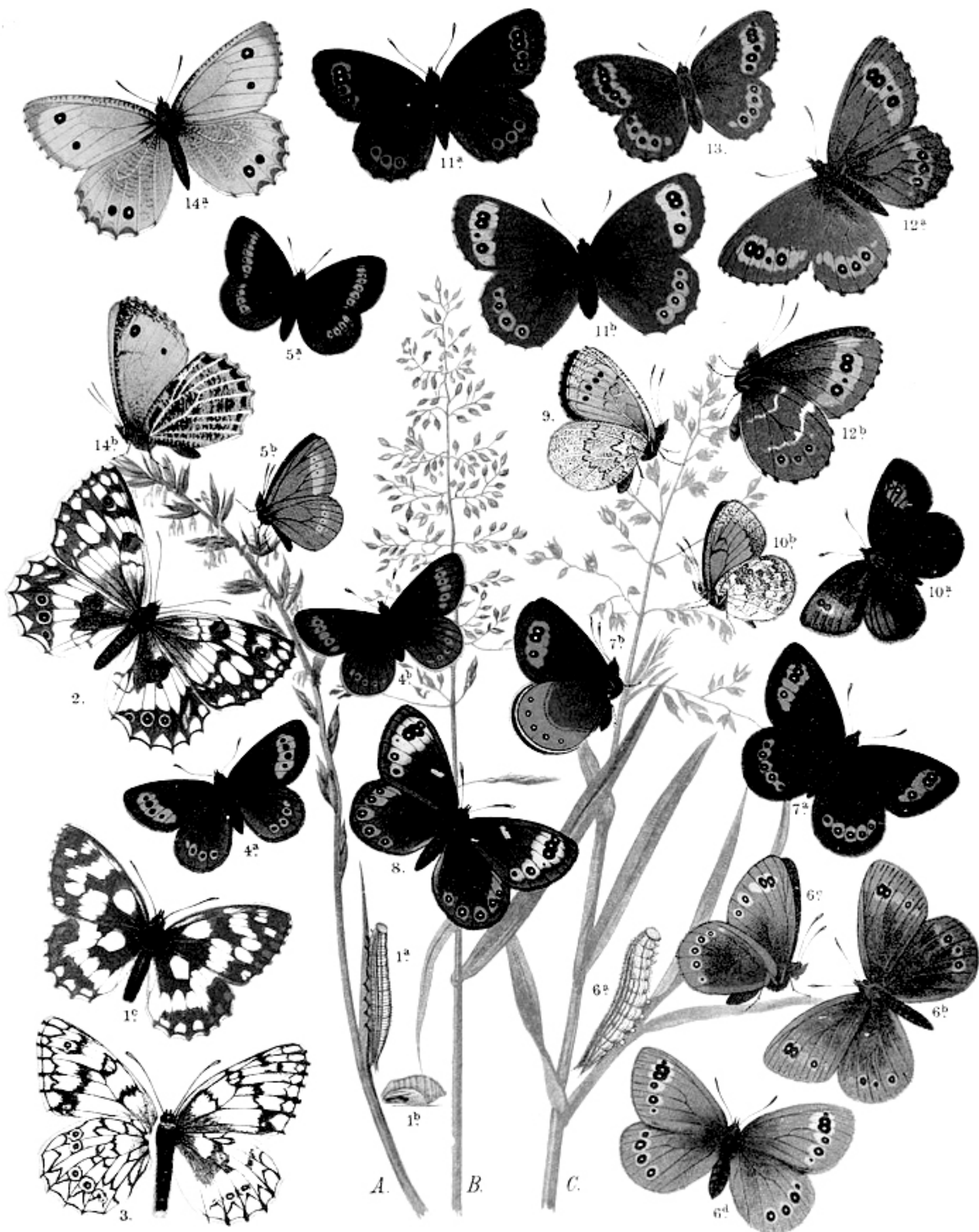
3. 3^a RAINETTE D'AUBRY, A Dum. 4 RAIN. CITROPODE, Pér et Les 5 DACTYLETHRE DE MÜLLER, Peters

6 6^a DACTYLETHRE DU CAP, Cuvier.



Humbert del et lith.

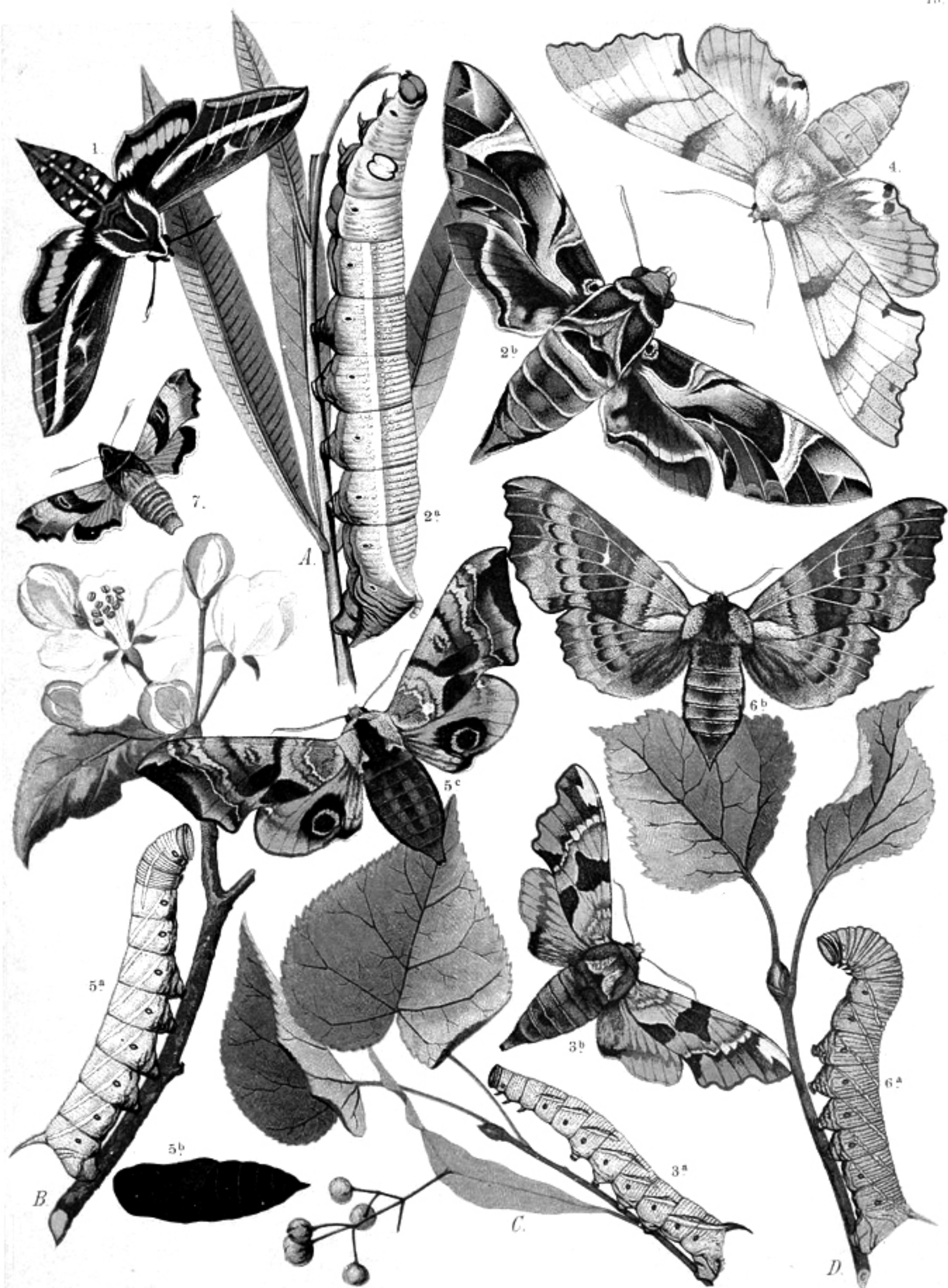
1. ACHELOUS SPINIMANUS.



1 a. b. c. *Melanargia galathea* ♂. — 2. *M. larissa* ♀. — 3. *M. japygia*, v. *suwarowius* ♂. — 4 a. *Erebia epiphron*, b. var. *cassiope*. — 5 a. b. *Er. melampus*. — 6 a. b. c. ♂ d. ♀ *Er. medusa*. — 7 a. b. *Er. stygne* ♀. — 8. *Er. epistygne*. — 9. *Er. lappona* ♂. — 10 a. b. *Er. tyndarus* ♂. — 11 a. ♂ b. ♀ *Er. aethiops*. — 12 a. b. *Er. ligea* ♂. — 13. *Er. euryale* ♀. — 14 a. b. *Oeneis aello* ♀.



1 a, b, c. ♀ *Acherontia atropos*. — 2 a, b, c. ♂ *Protoparce convolvuli*. — 3 a, b. ♂ *Sphinx ligustri*



1. *Deilephila livornica* ♂. — 2 a. b. ♀ *Daphnis nerii*. — 3 a. b. ♀ *Mimas tiliae*. — 4. *Smerinthus quercus* ♀. — 5 a. b. c. ♂ *Smer. ocellata*. — 6 a. b. ♀ *Smer. populi*. — 7. *Proserpinus proserpina*.