

Hullmandel & Walton Lithographers.

Fig 1, 2. LUTODEIRA SALMONEA. Fig: 3-5. ELOPS MACHNATA

Drawn on Stone by W Mitchell

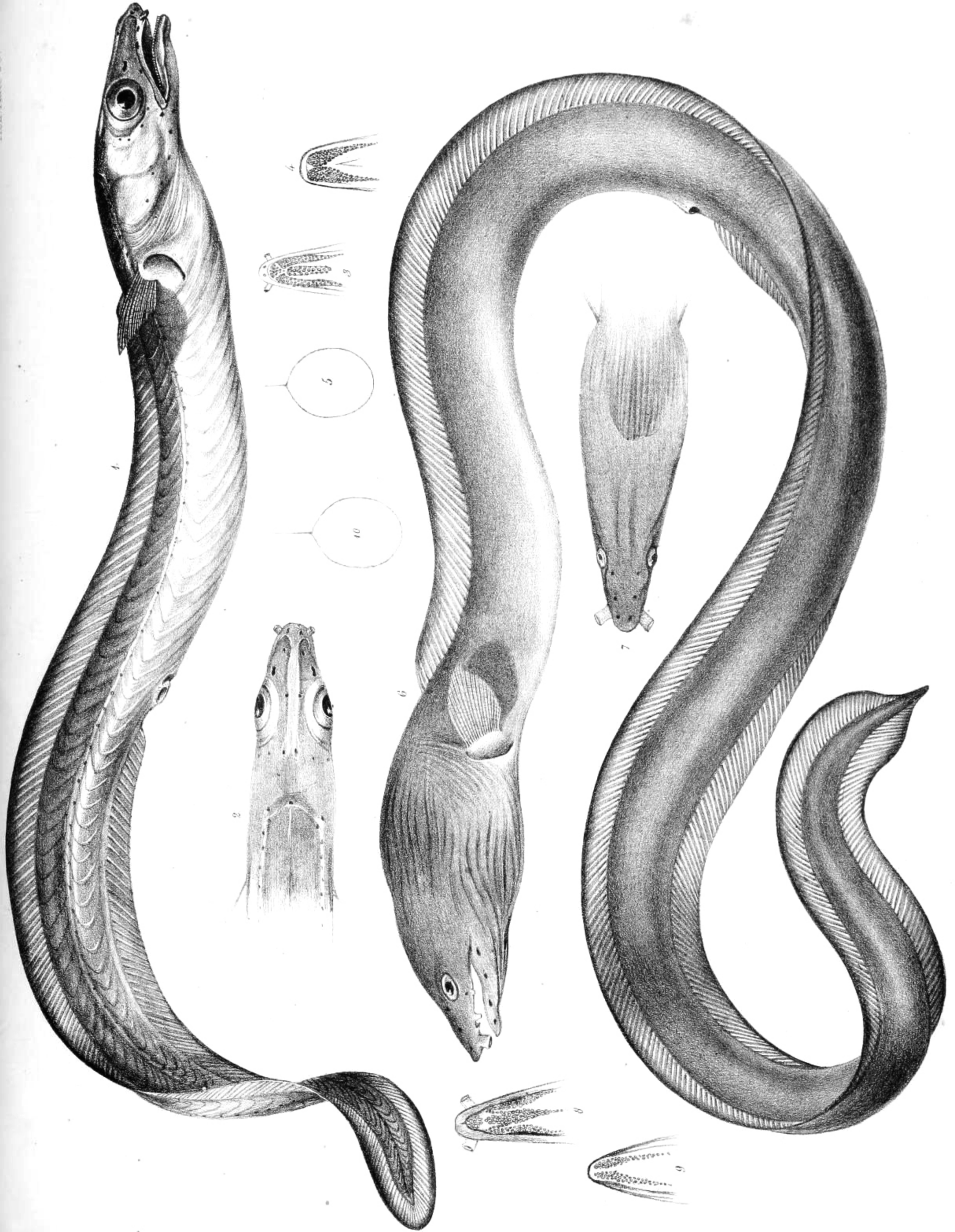


Fig. 1-5 CONGRUS HABENATUS. Fig. 6-9 OPHISURUS CANCRIVORUS

Drawn on Stone by W Mitchell.

Hilbrantzel & Walzen Lithographers

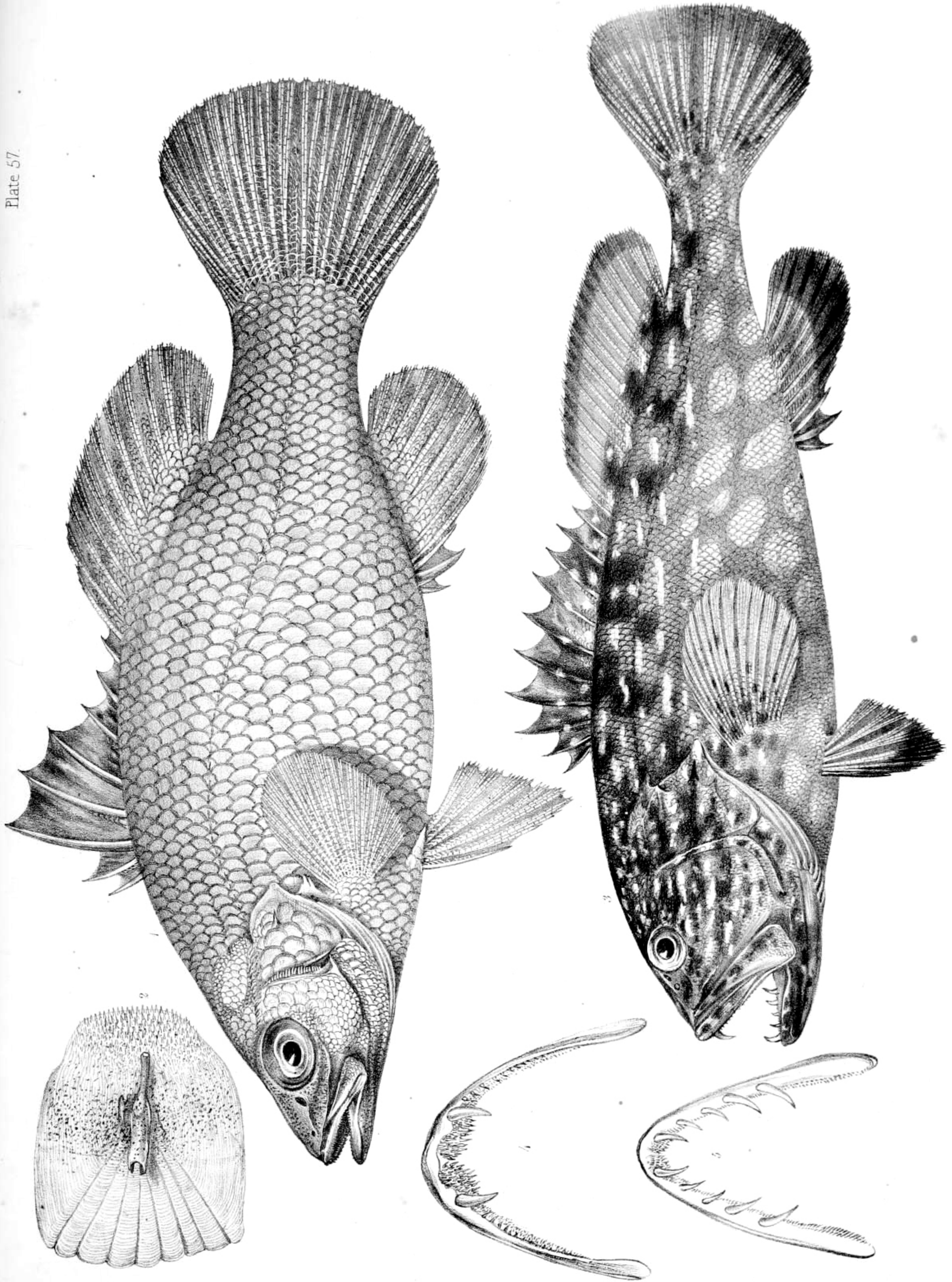
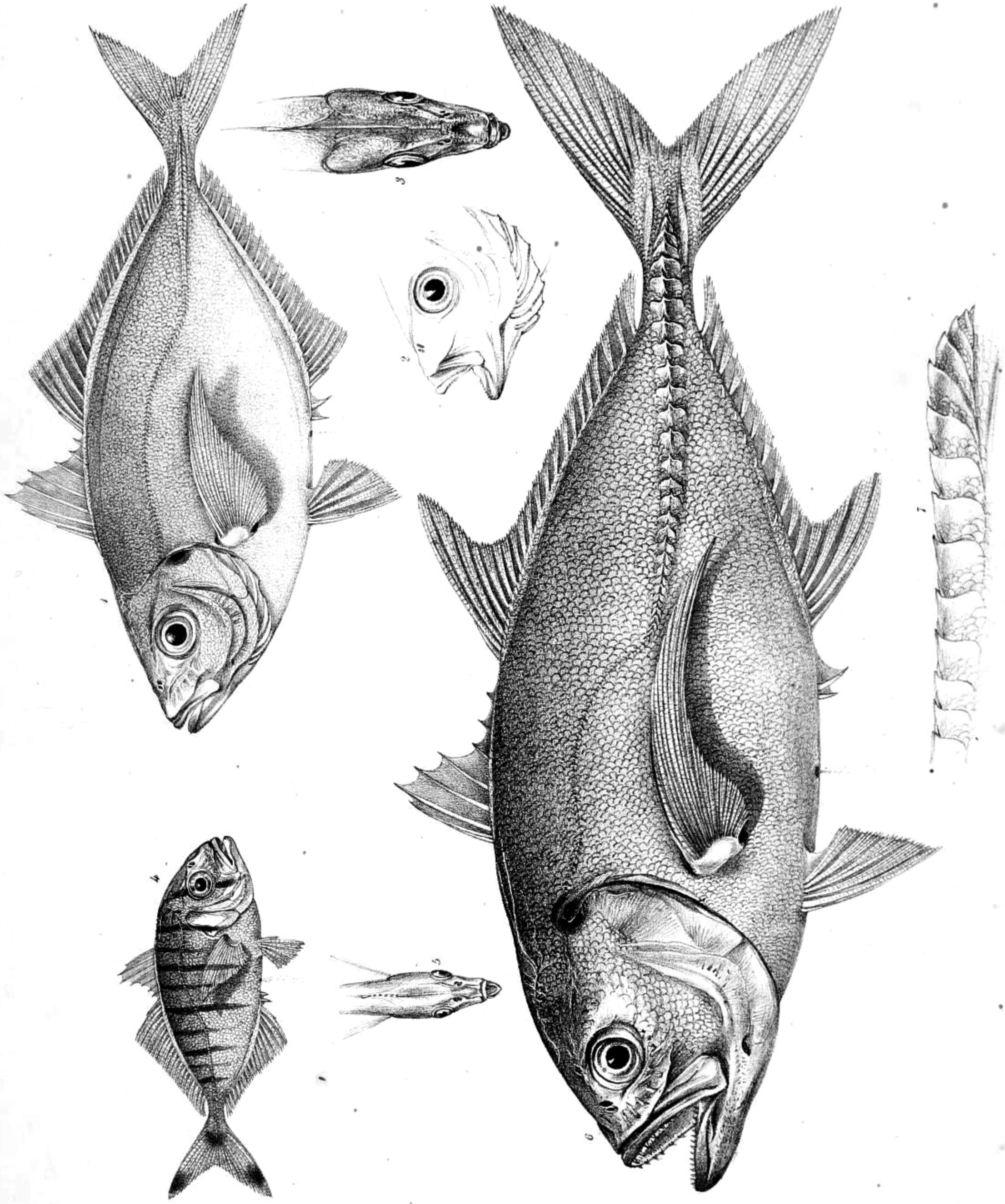


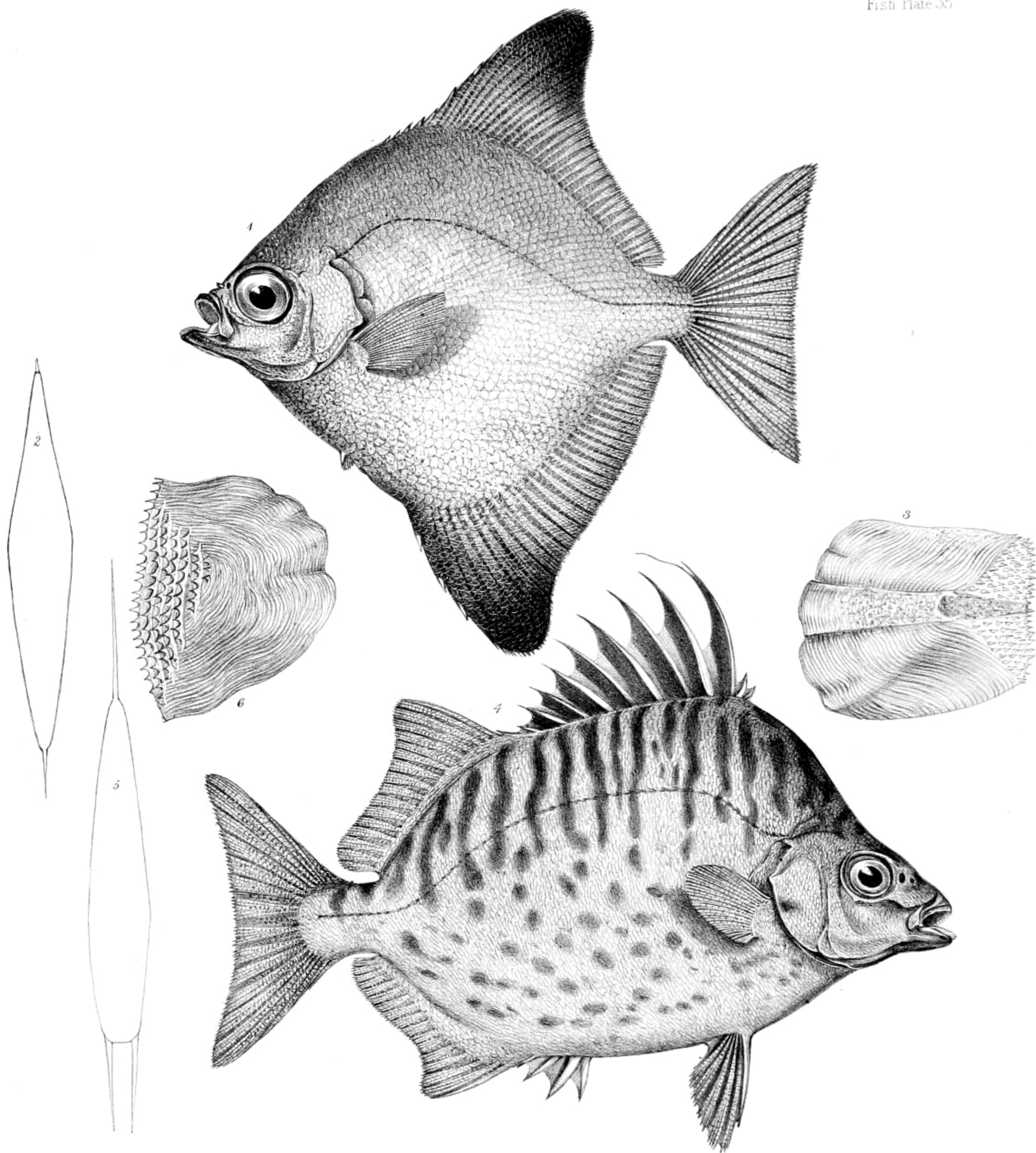
Fig 1. 2 PSAMMOPERCA DATNIOIDES. Fig 3-5. PLECTROPOMA DENTEX



Drawn on Stone by W. Mitchell.

Hullmandel & Walton Lithographers

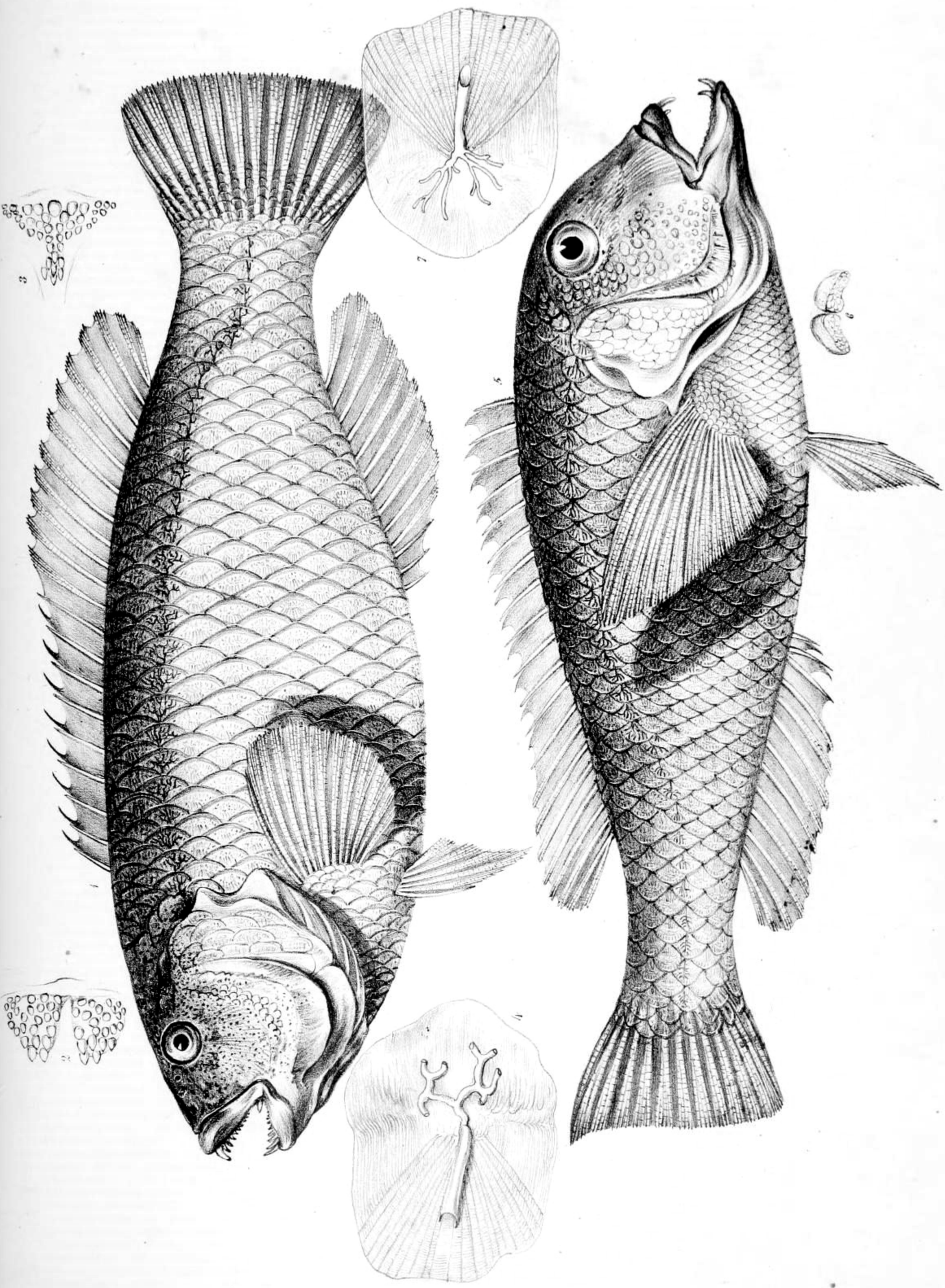
Fig. 1-3. CARANX GEORGIANUS. Fig. 4, 5. CARANX POLOOSOO. Fig. 6, 7. CARANX PARASPISTES.



Drawn on Stone by W. Mitchell.

Hillmandel & Walton Lithographers.

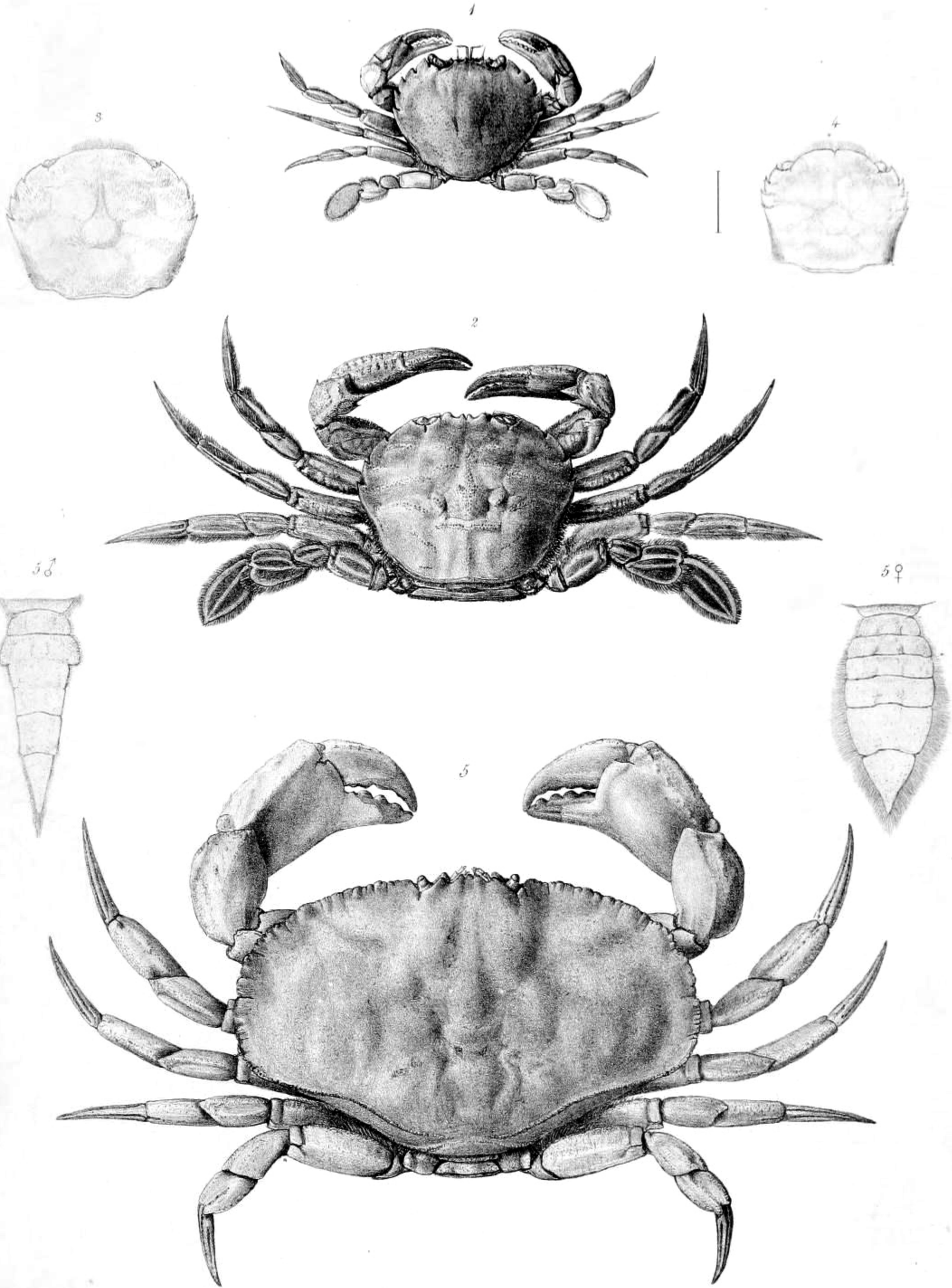
Fig 1-3. PSETTUS ARGENTEUS. Fig 4-6. SCATOPHAGUS MULTIFASCIATUS.



Hullman & Walton Lithographers.

Drawn on Stone by W. Mitchell.

Fig. 1-4. LABRUS TETRICUS. Fig. 5-7. LACHNOLAIMUS CYANODUS.



William Wing del et lith

Hillmandel & Walton Lithographers.

1. PORTUNUS CATHARUS.

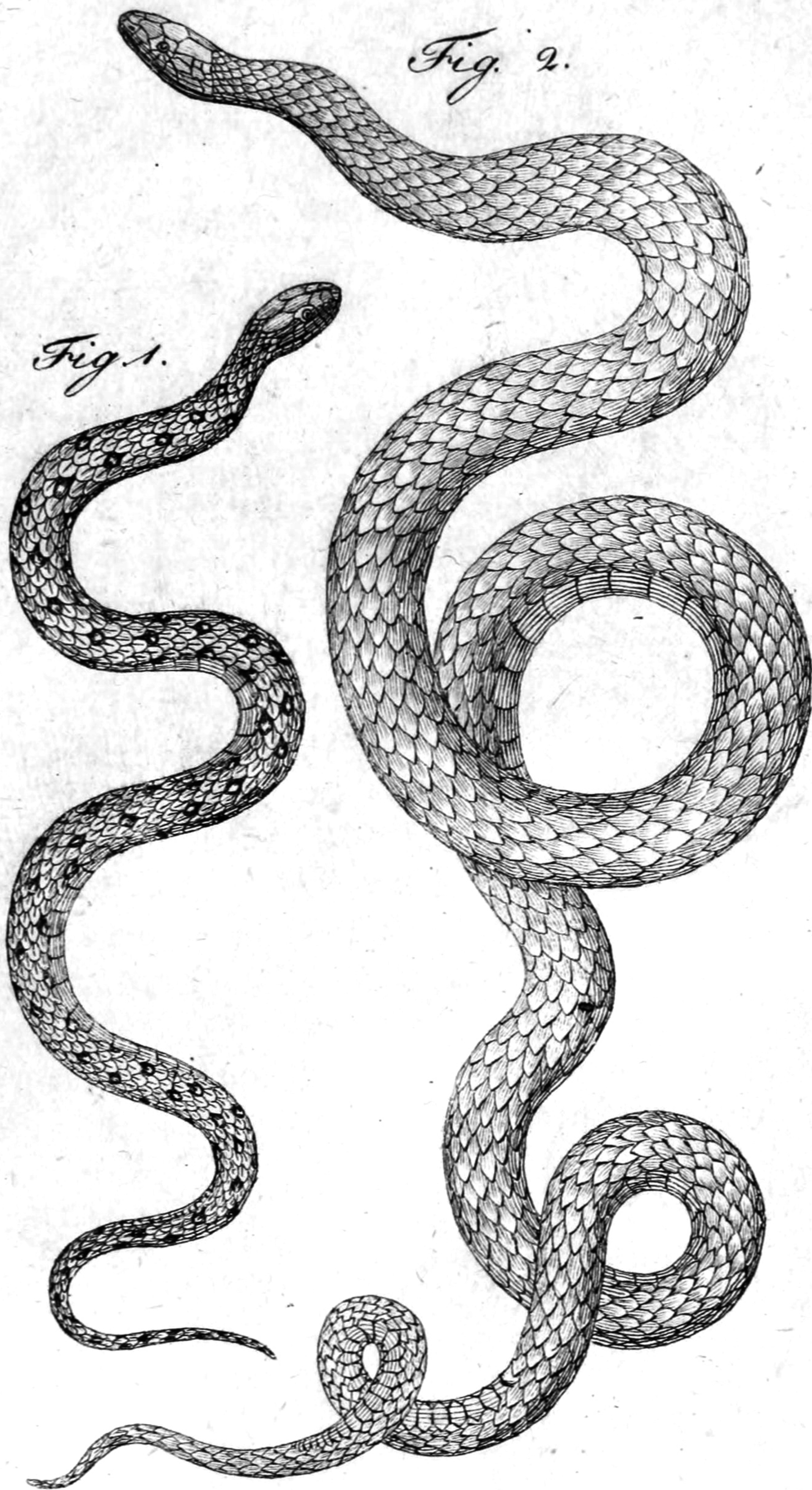
3. PORTUNUS INTEGRIFRONS.

2. ANTARCTICUS

4.

JUN.

5. CANCER NOVÆ-ZEALANDIÆ.

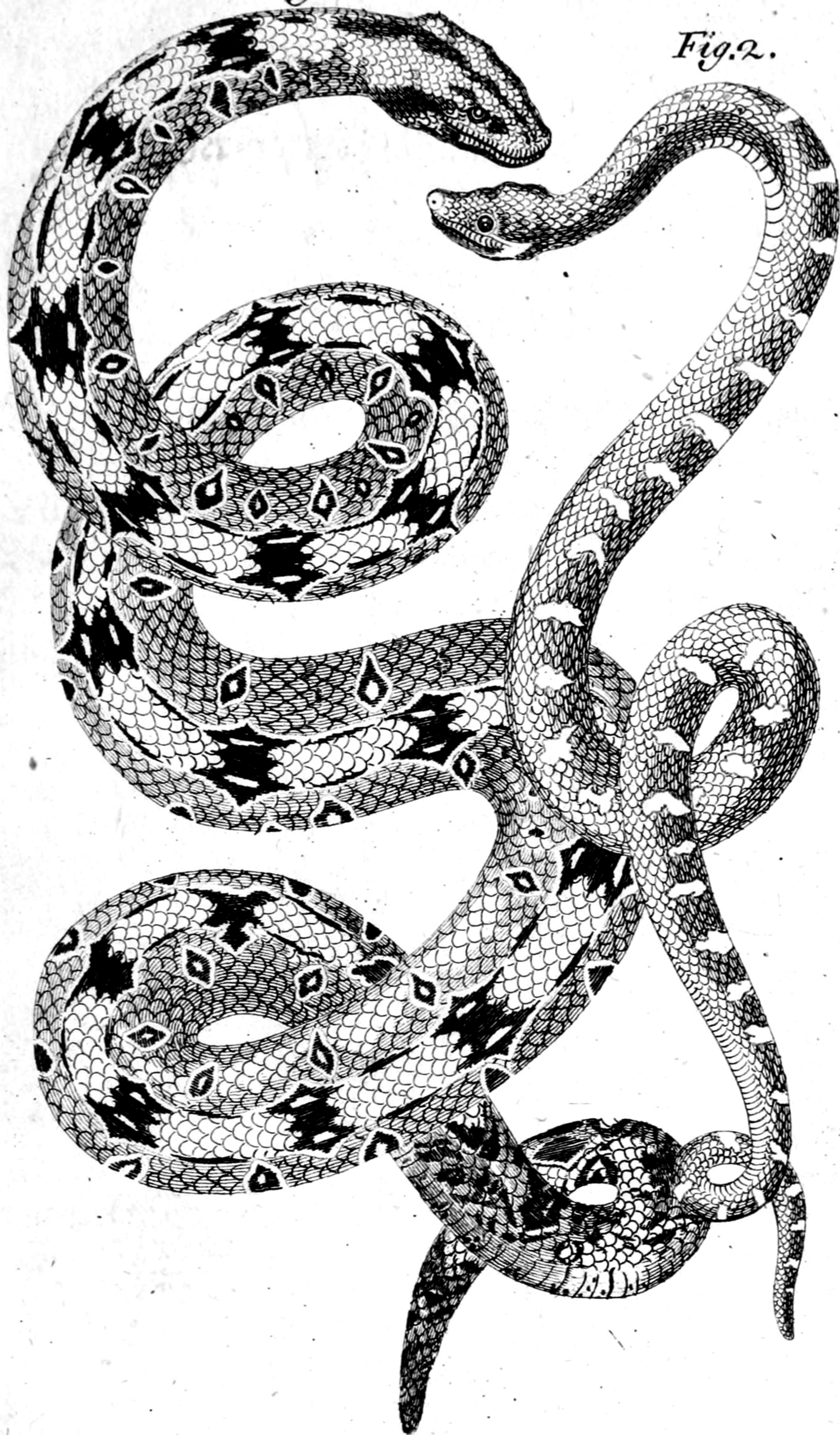


1. Die Quincuna Natter.  
2. Die Flor Natter.

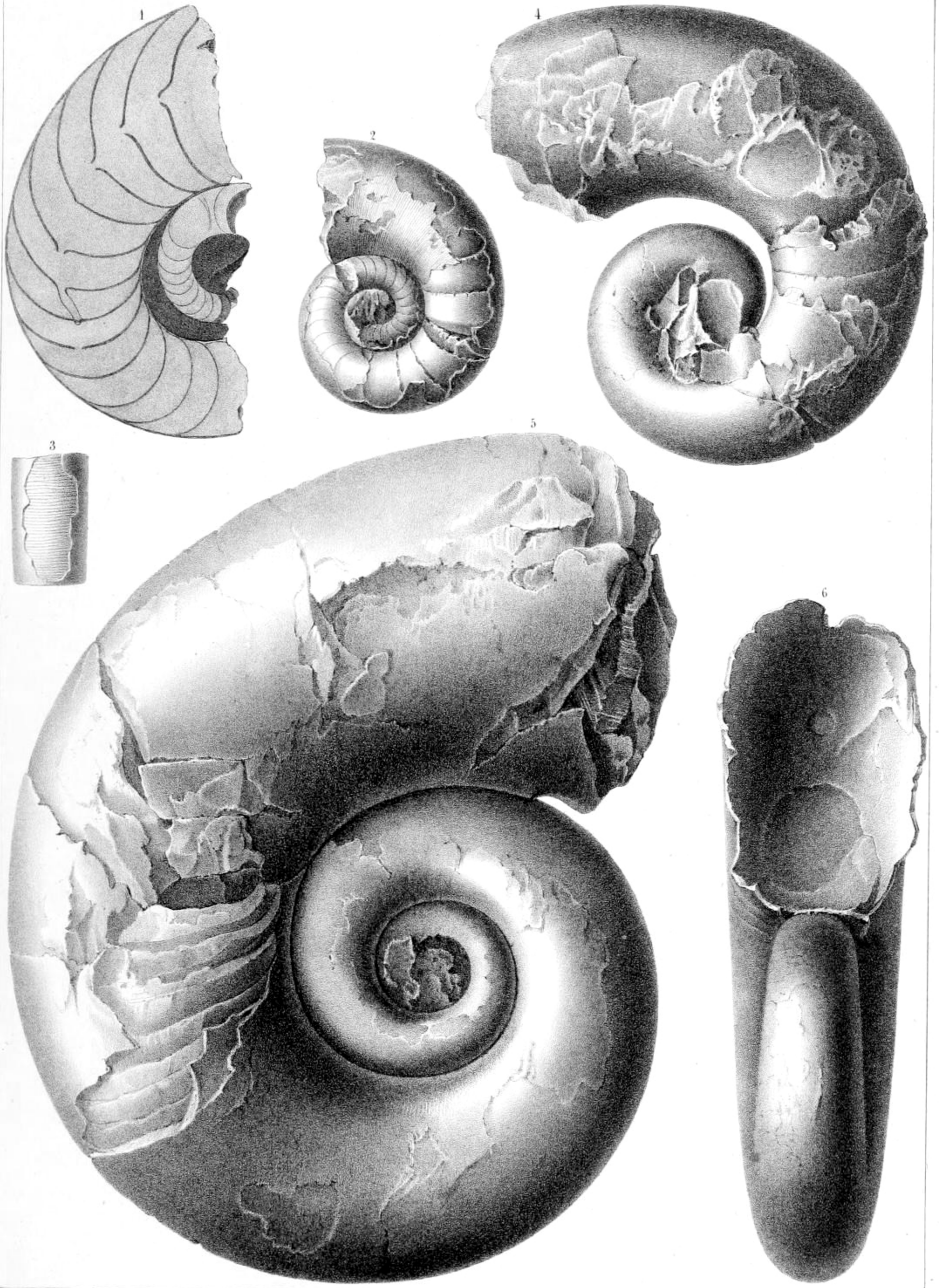


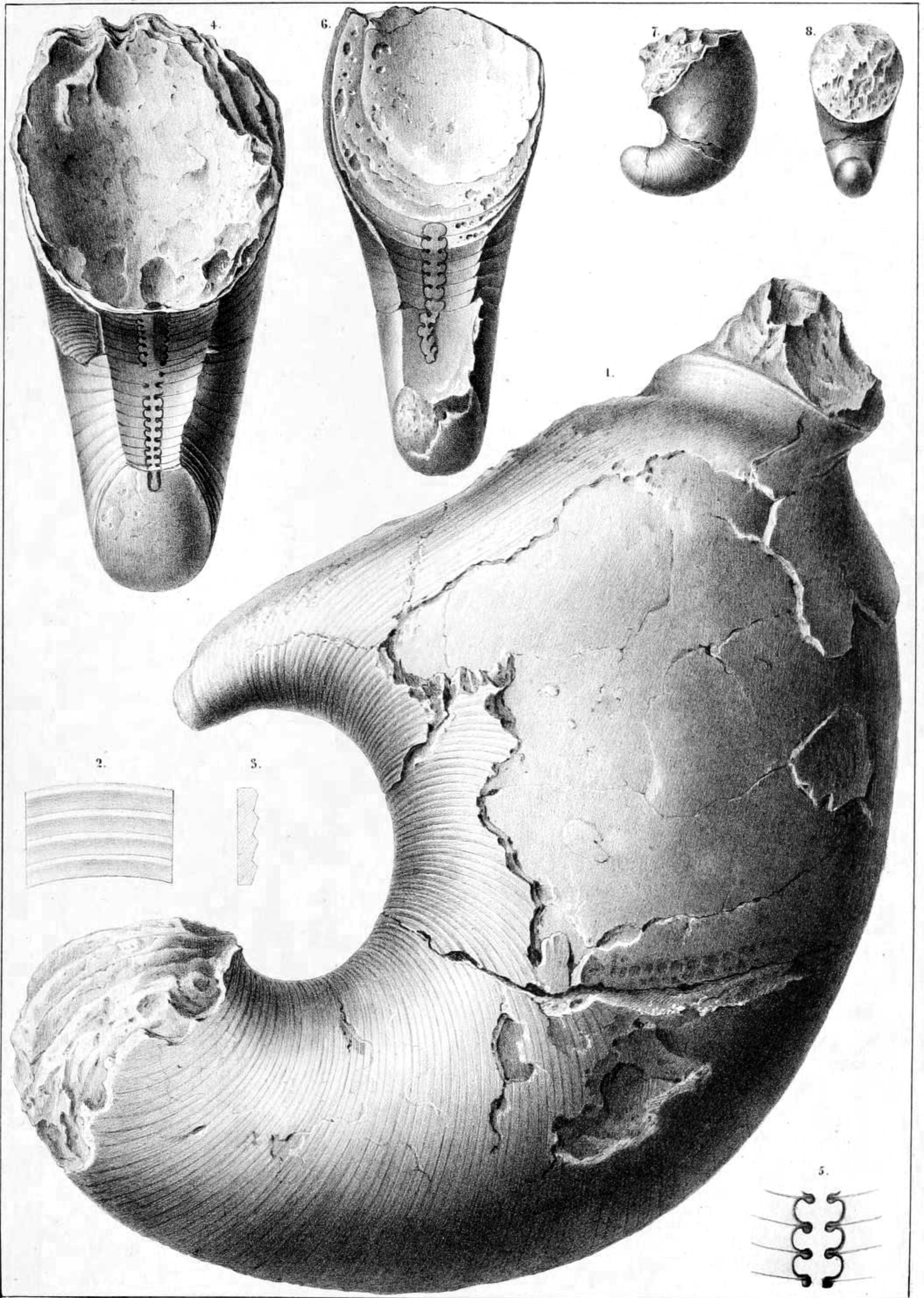
Fig. 1.

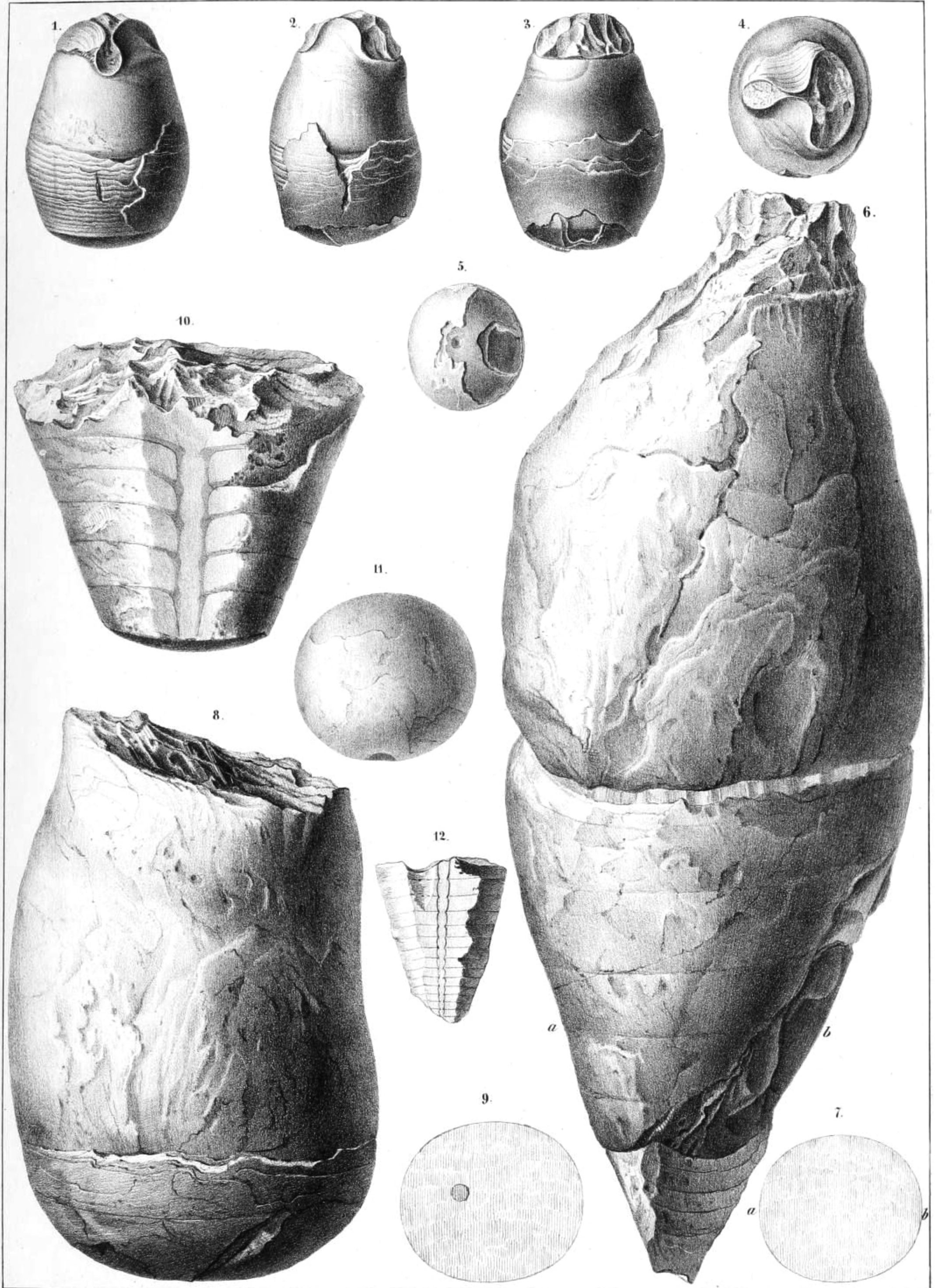
Fig. 2.

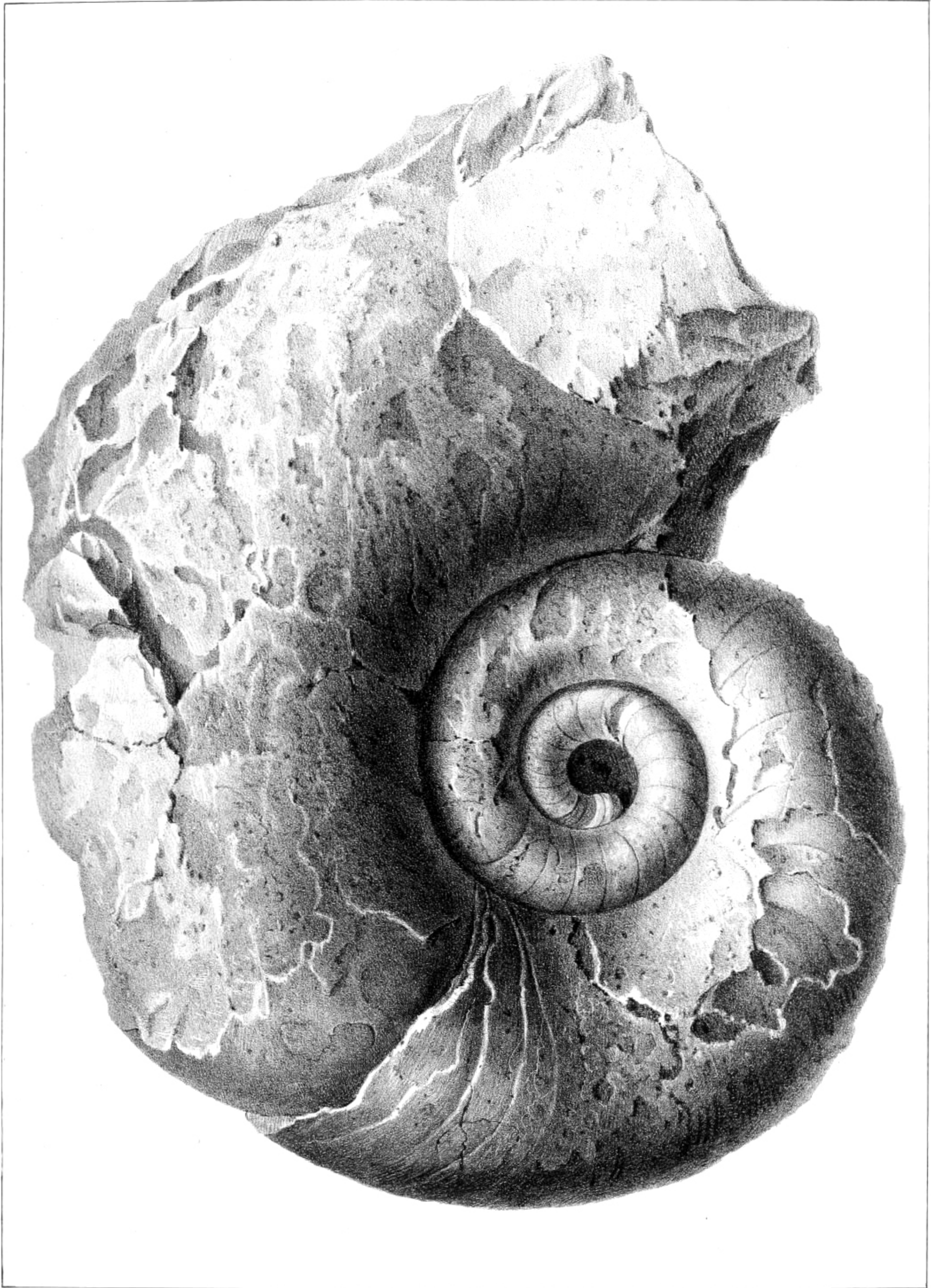


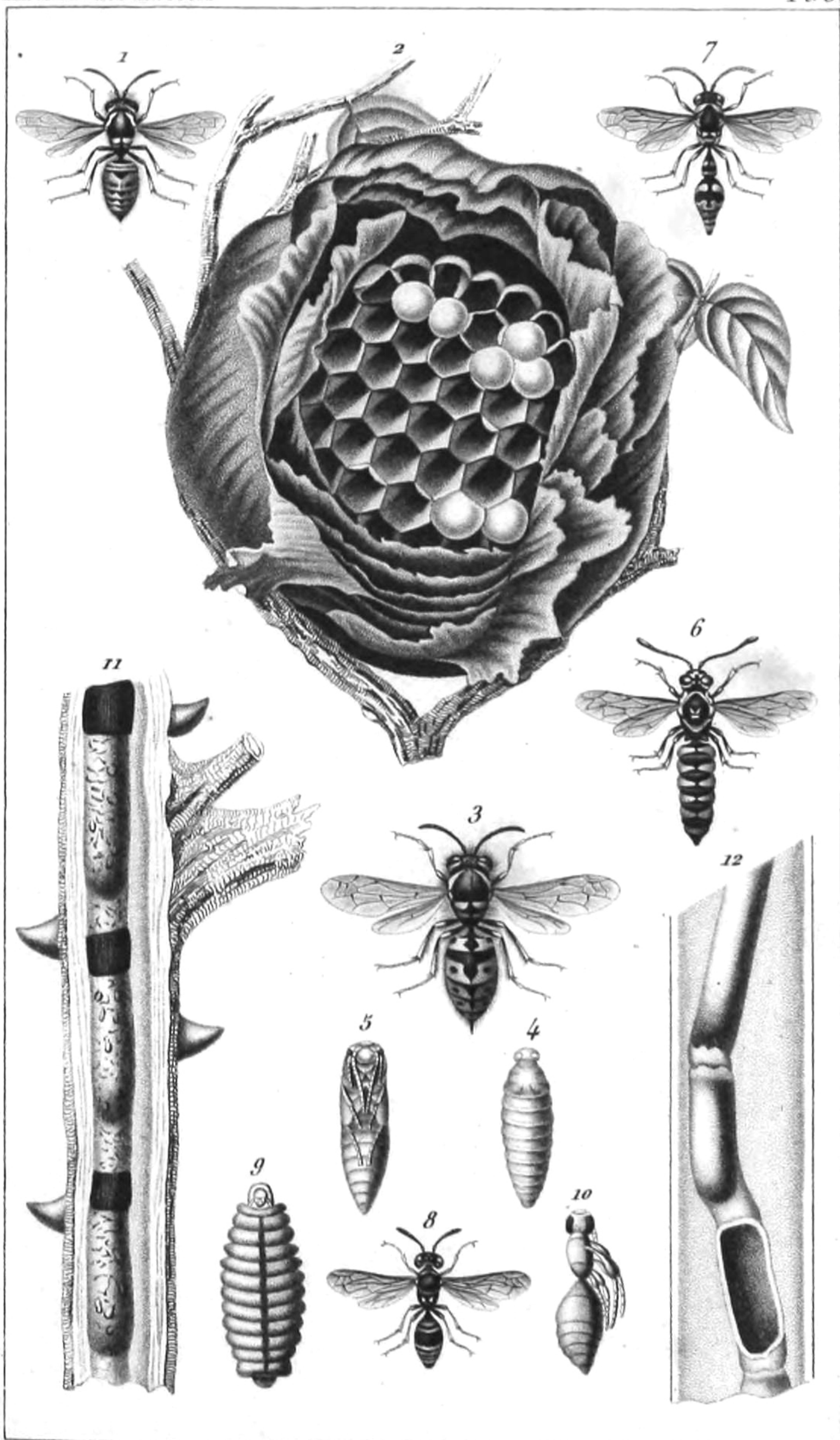
1. Der koenigliche Schlinger.  
2. Der hornschnaeblicher Schlinger.

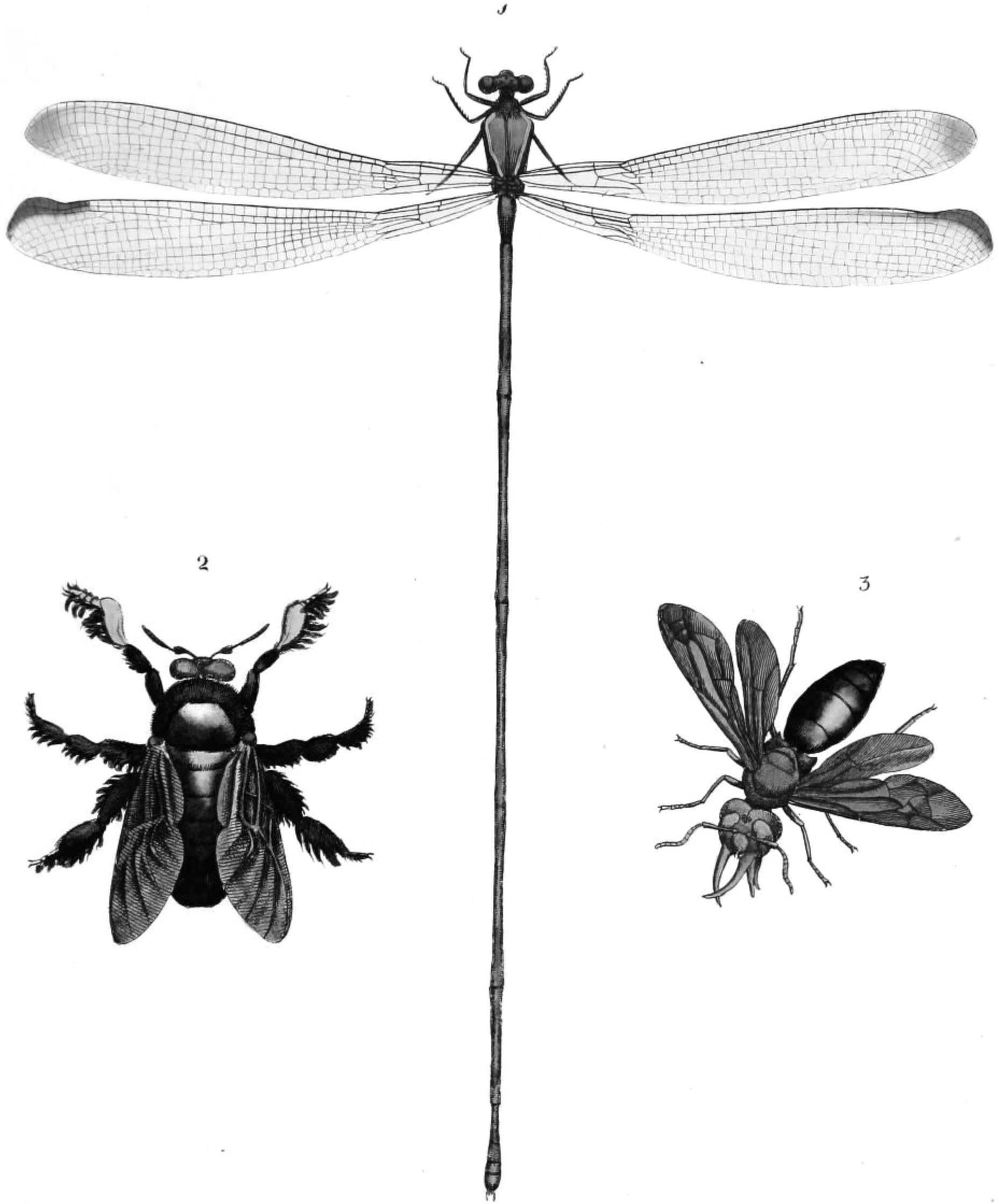




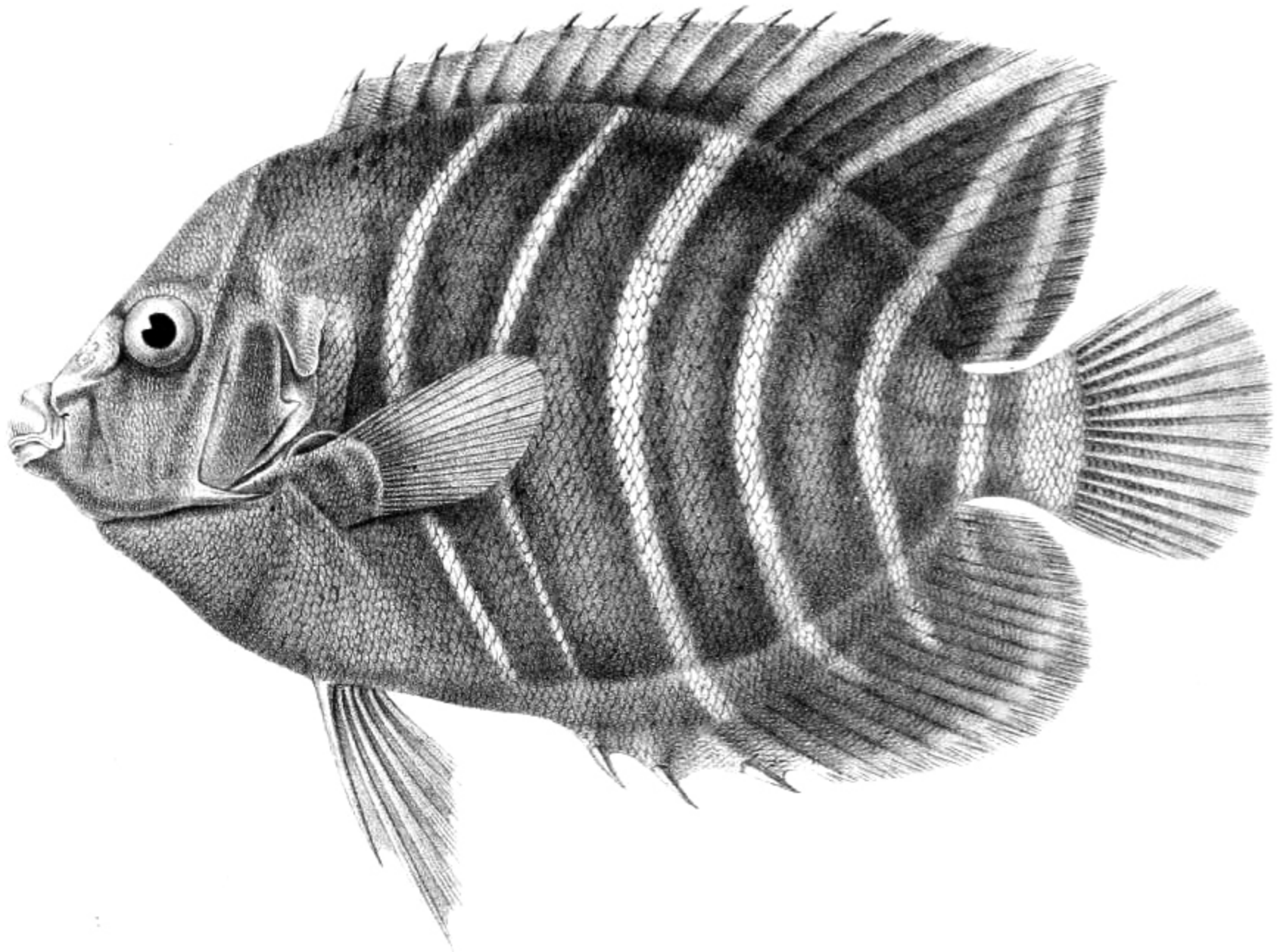




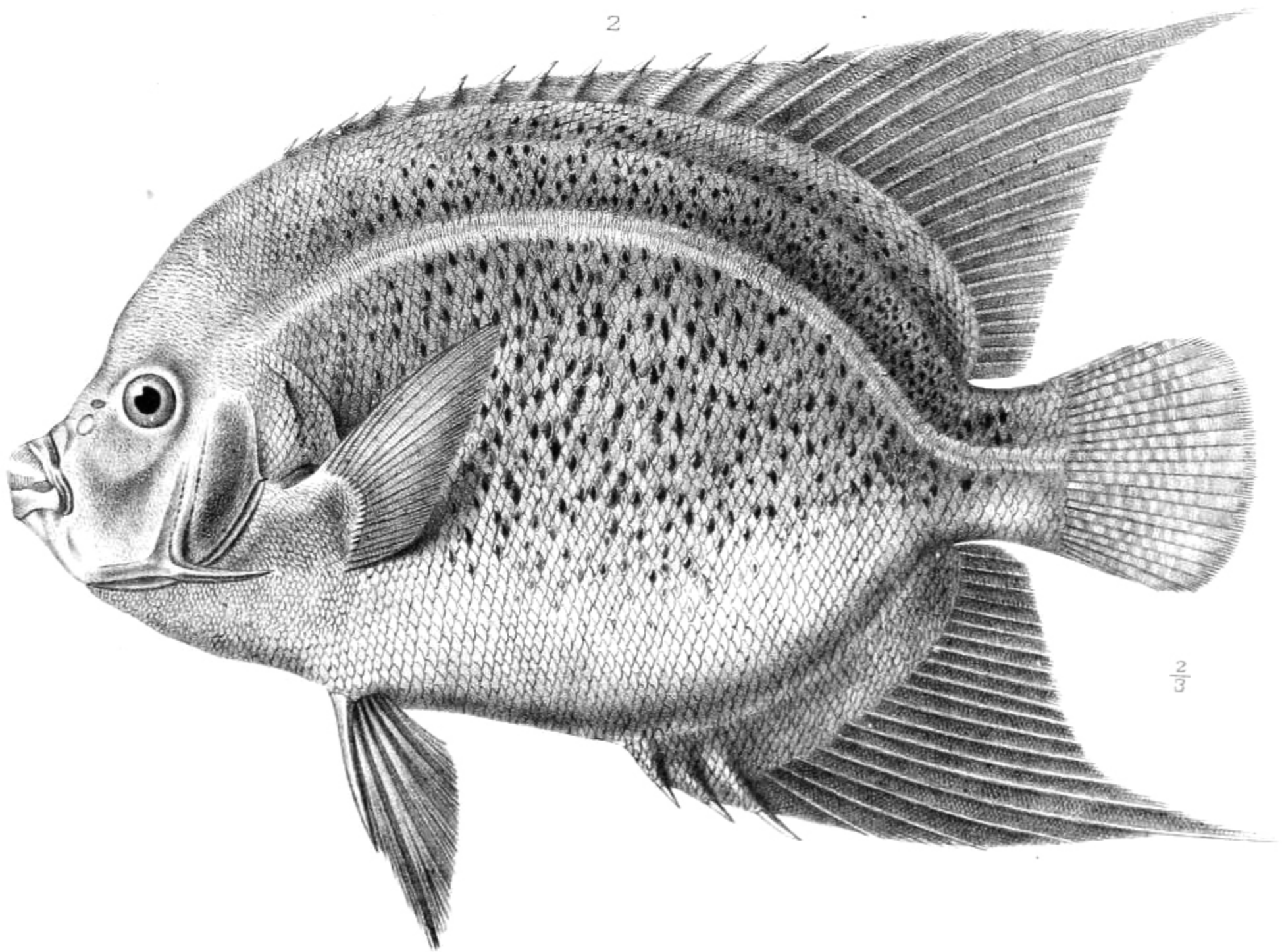




1



2



2/3

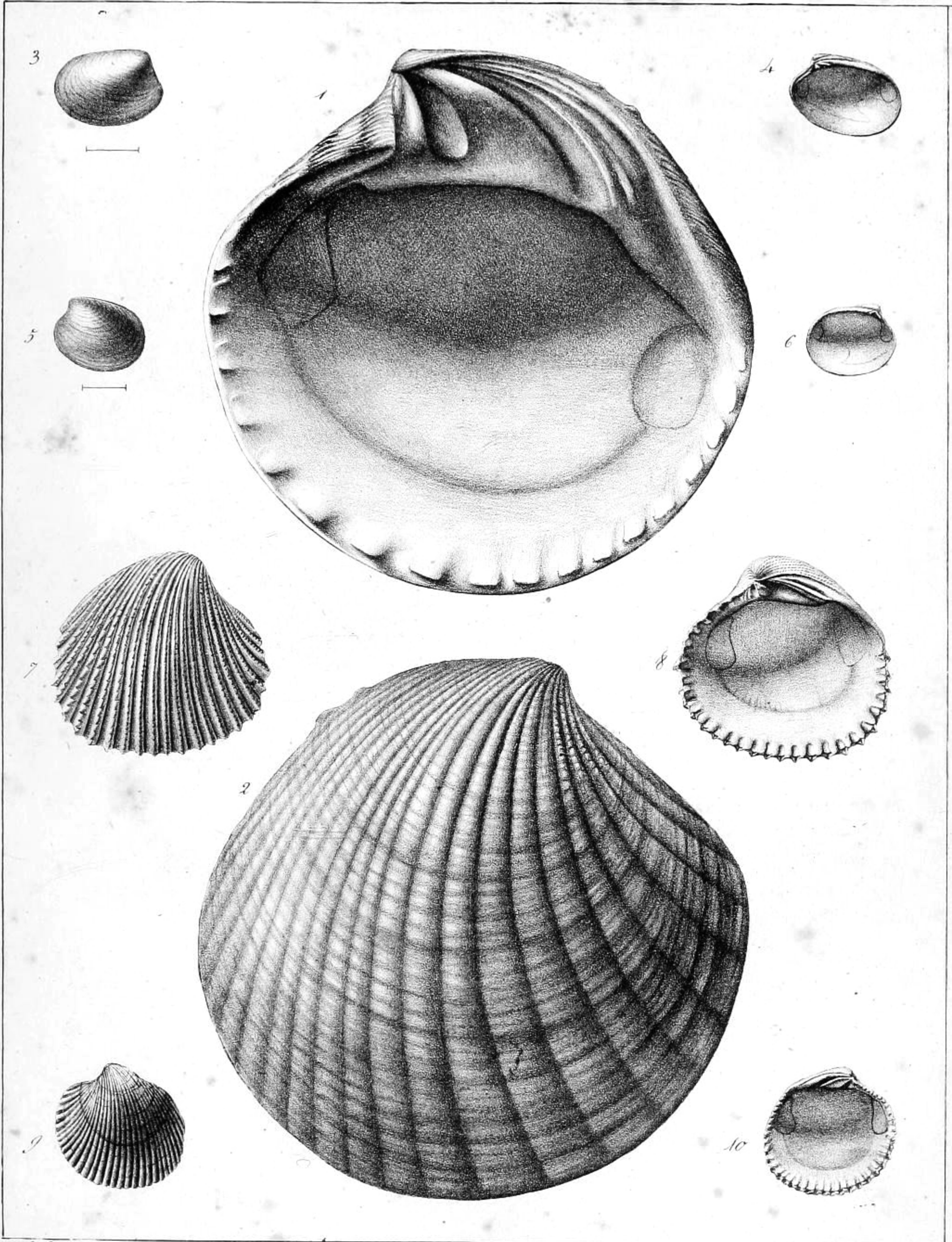
John pax

Impo Becquet fr Paris

Arnoul lith

1. *Holacanthus chrysurus*. — 2. *H. reginæ*.





*Deloy del<sup>te</sup>*

*Leth de Constantin*

*Coquilles fossiles des environs de Paris.*