

A NEW RACE OF....

Hardy
Running**ROSES**Hybrids of *Rosa Wichuraiana*.
(The Memorial Rose.)

AMONG the many new forms of Roses introduced of late, and the present decade has been most prolific in new classes, we believe that none will outrival these in general usefulness. We had the pleasure of first calling wide public attention to the merit of one of the parents of these Roses, *i. e.*, the "Memorial Rose" (*Rosa Wichuraiana*), and so it is with added pleasure that we announce the advent of these new Roses. They retain the prostrate habit of the *Wichuraiana*, with its distinctive charm of foliage and its vigor of growth; in fact, they are, if anything, stronger than the parent. We saw them growing on a gravelly terrace where it would seem no Rose would find sufficient sustenance to grow, and yet they made from 15 to 18 feet of growth in one season. We predict unbounded popularity for these, whether for use in the private garden, in the cemetery, or in large public parks, for covering rocky slopes, embankments, etc. The double varieties will unquestionably make grand pot plants for the greenhouse or conservatory, and can also be used as climbers, and we believe that the white variety will eventually take rank with the *Crimson Rambler* and form a splendid contrast to it.

**THE DOUBLE
WHITE "MEMORIAL
ROSE." (No. 3 in cut.)**

(Manda's Triumph)

This is the gem of the collection, and may well be called the *Double "Memorial Rose,"* as it preserves the color of the parent, with its characteristics of growth and foliage, but the flowers are double and very fragrant. They are produced in clusters of from twelve to eighteen flowers on each cluster on small side shoots, literally covering the plant and standing well above the foliage, giving a very graceful appearance. This variety will be valuable for all purposes, whether for trailing on the ground for cemetery use, growing on fences and gate posts, boundary walls, or as specimens in pots or tubs.

For prices see end of list—next column.

**DOUBLE PINK "MEMORIAL
ROSE." (No. 1 in cut.)**

(Universal Favorite.)

A fitting companion to the above; identical in growth, but with perfectly formed double flowers one and one-half to two inches in diameter, of a soft, light pink, and very fragrant.

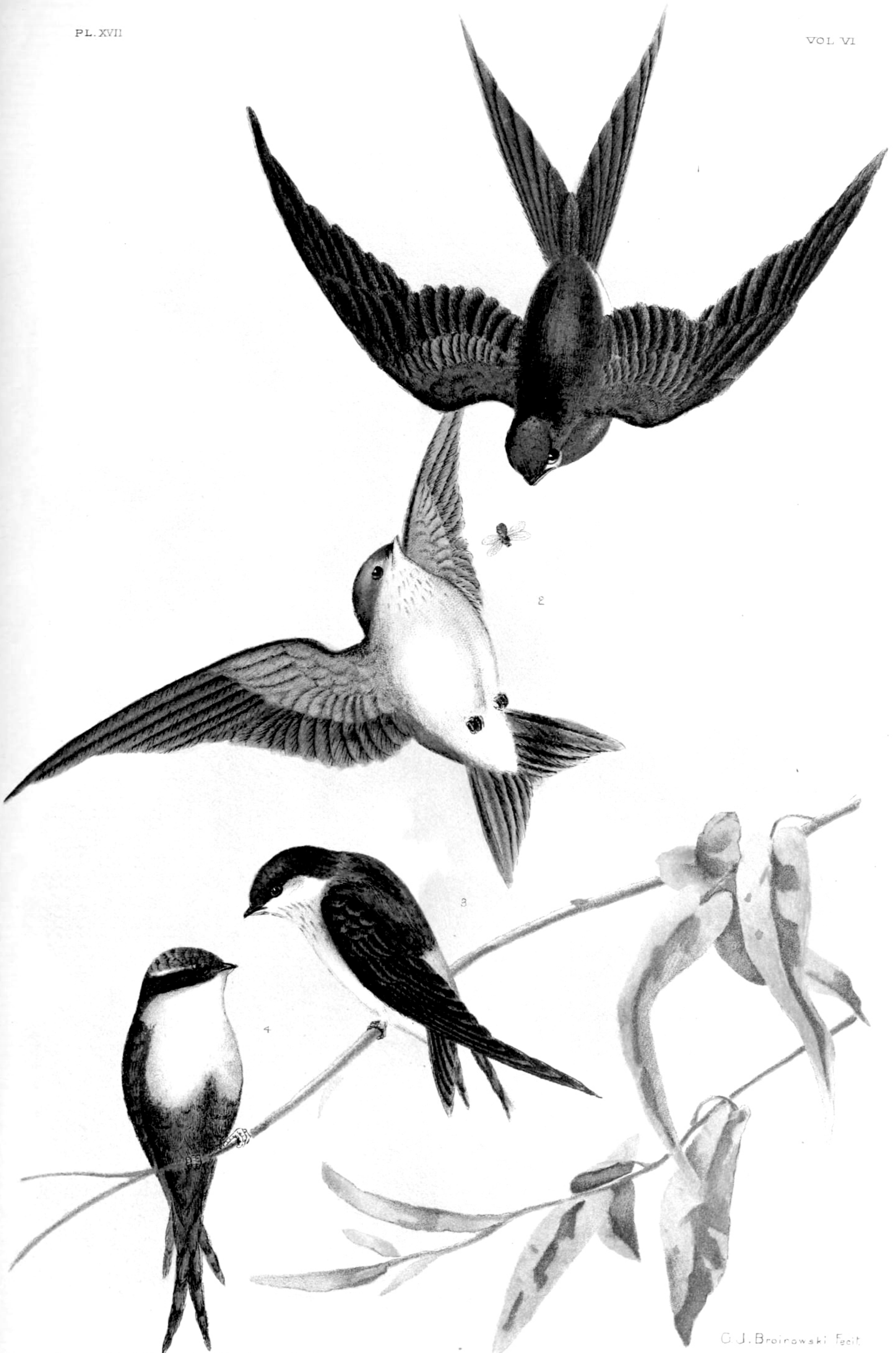
**SOUTH ORANGE
PERFECTION. (No. 4 in cut.)**

This variety is similar to the preceding in growth. It has double flowers, soft blush changing to white, about one and one-half inches in diameter. The blossoms are, if anything, more freely produced than on the preceding, and are more double, perfect rosettes in shape. This is a very pretty variety and entirely distinct from the others.

**PINK ROAMER.
(No. 2 in cut.)**

This variety shows undoubted traces of descent from the *Sweet Brier*, both in the color and the shape of the blossom and in its exquisite fragrance. The single flowers are over two inches in diameter, a bright rich pink, with a large, silvery-white centre and orange red stamens, producing a most charming effect.

Price for any of the new Roses on this page, 2 year old plants from 5 and 6 inch pots, 40c. each, \$4.00 per doz. Plants from 3 inch pots, \$1.50 doz., \$10.00 per 100.



1 HIRUNDO FRONTALIS (Quoy et Gaim)
Welcome Swallow

3 LAGENOPLASTES ARIEL (Gould)
Fairy Martin

2 HYLOCHELIDON NICRICANS (Gould)
Tree Swallow

4 CHERAMOEA LEUCOSTERNA (Gould)
White-breasted Swallow

G.J. Brolowski fecit



Berberis serotina Lge.

C. & M. Thornam del. & sculp.



Philadelphus acuminatus Ige.

C. & M. Thornam del & sculp.



NID DE L'AMÉTHYSTE.
A. son Œuf.

Publié par Arthus Bertrand.



Galphimia hirsuta Cav.

Plate XXXVIII.



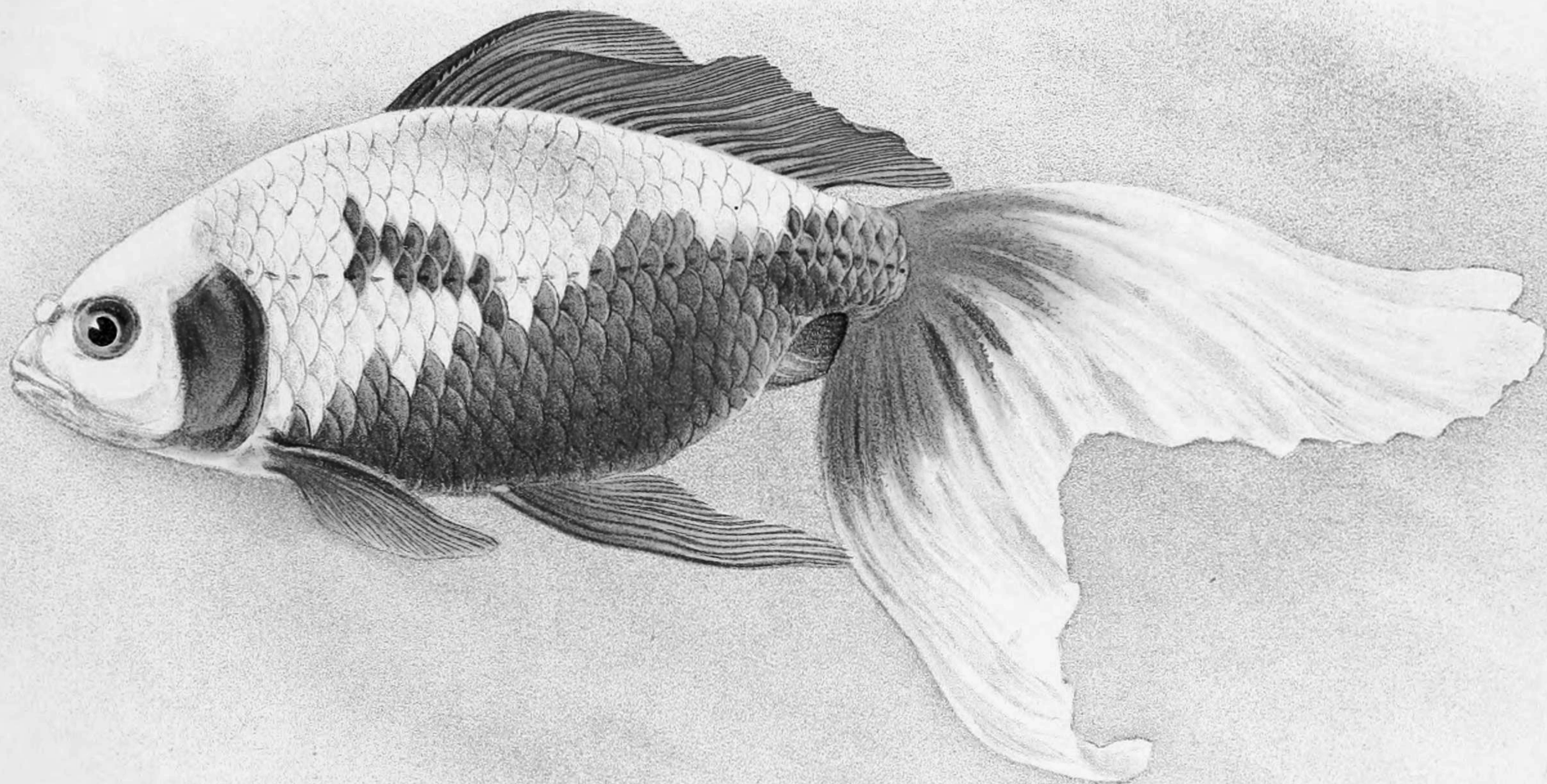
P. H. C. del et lith.

Reeve Benham & Reeve imp

Sylvicola pharetra, Gosse.
(p. 163.)



Phajus cupreus Rchb. Fil.



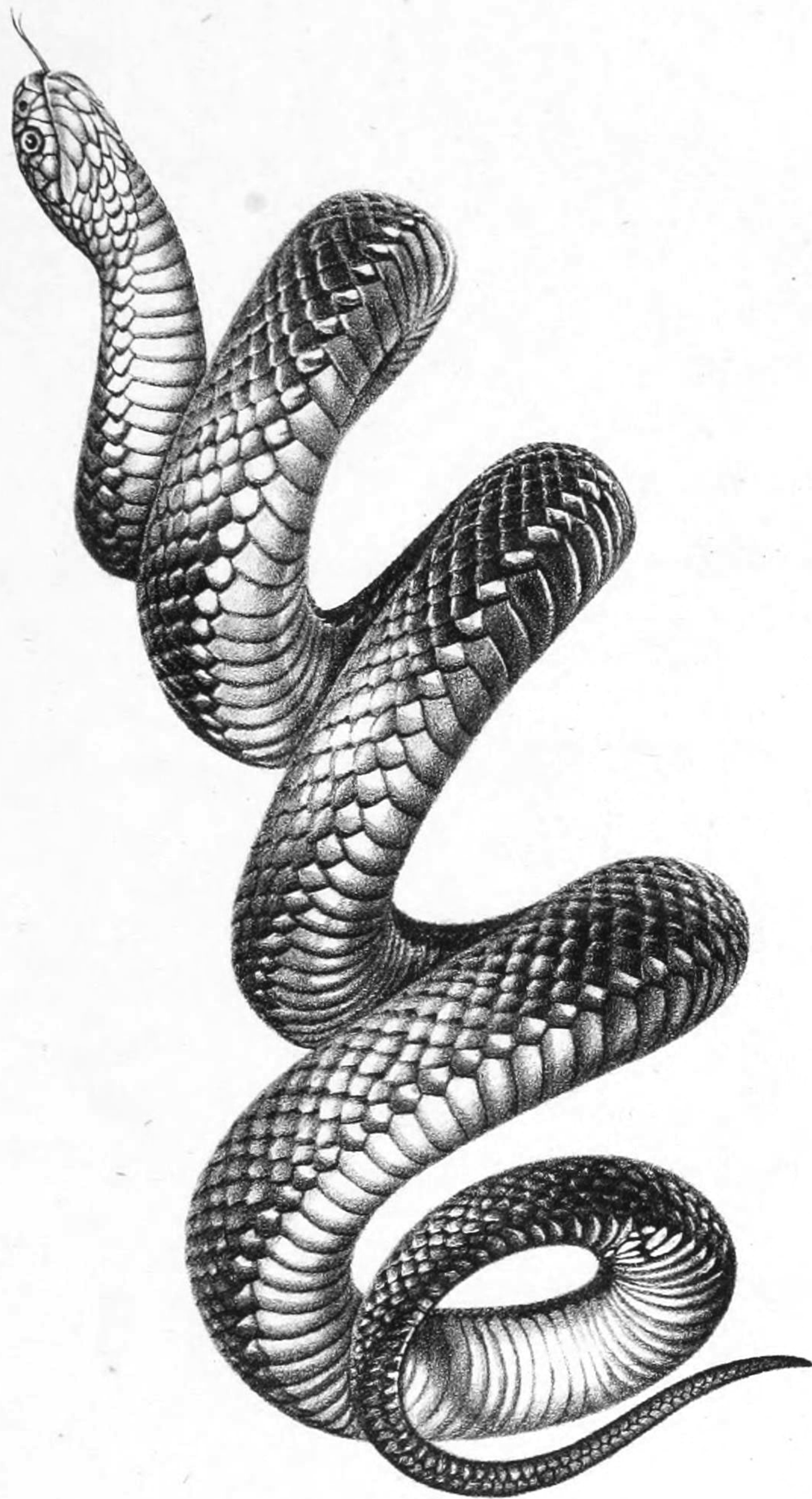
THE WATONAI
FRINGETAILED WAKIN
NATURAL SIZE

COPYRIGHT, 1909, BY S. MATSUBARA



PLATE VIII.

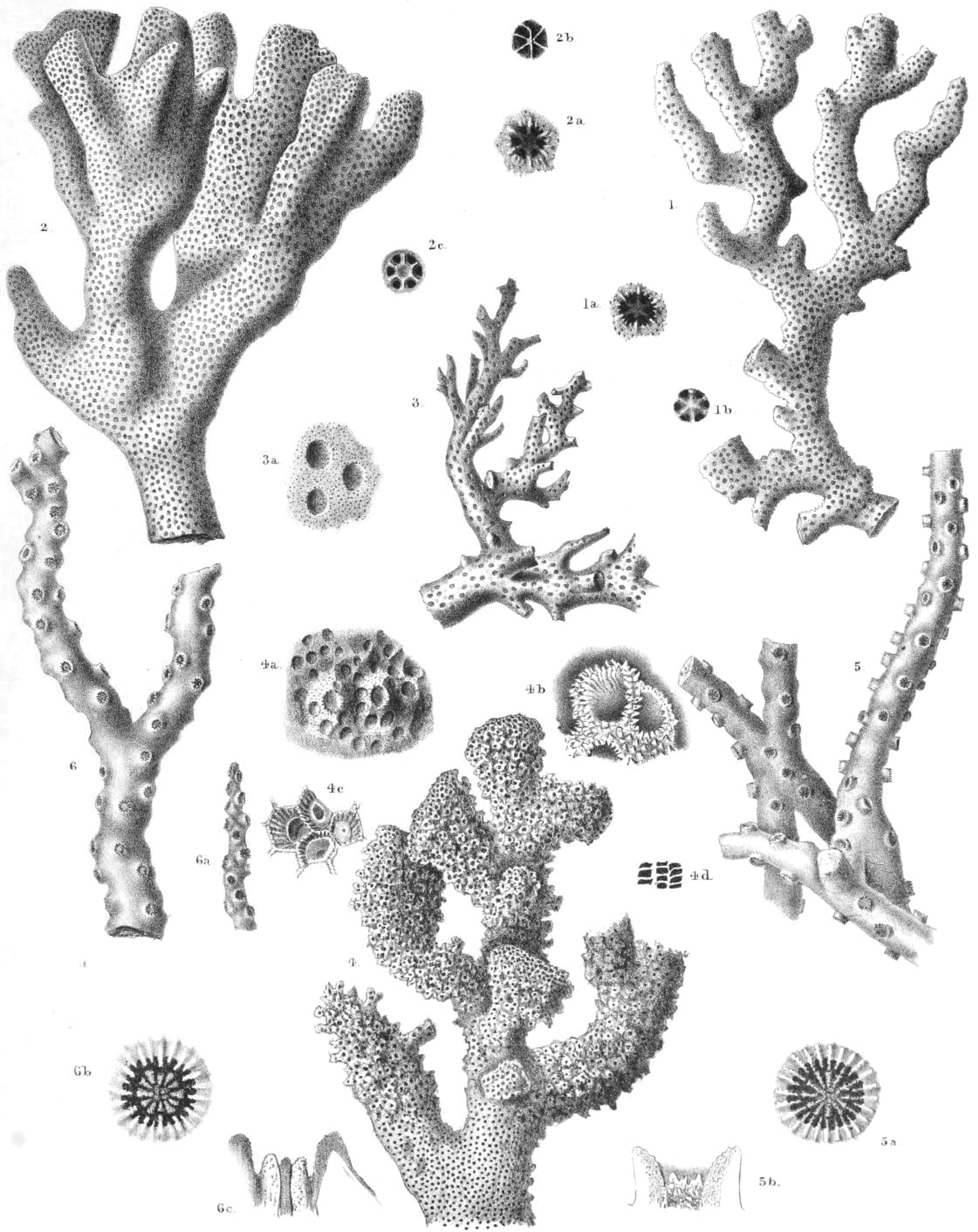
VENOMOUS.



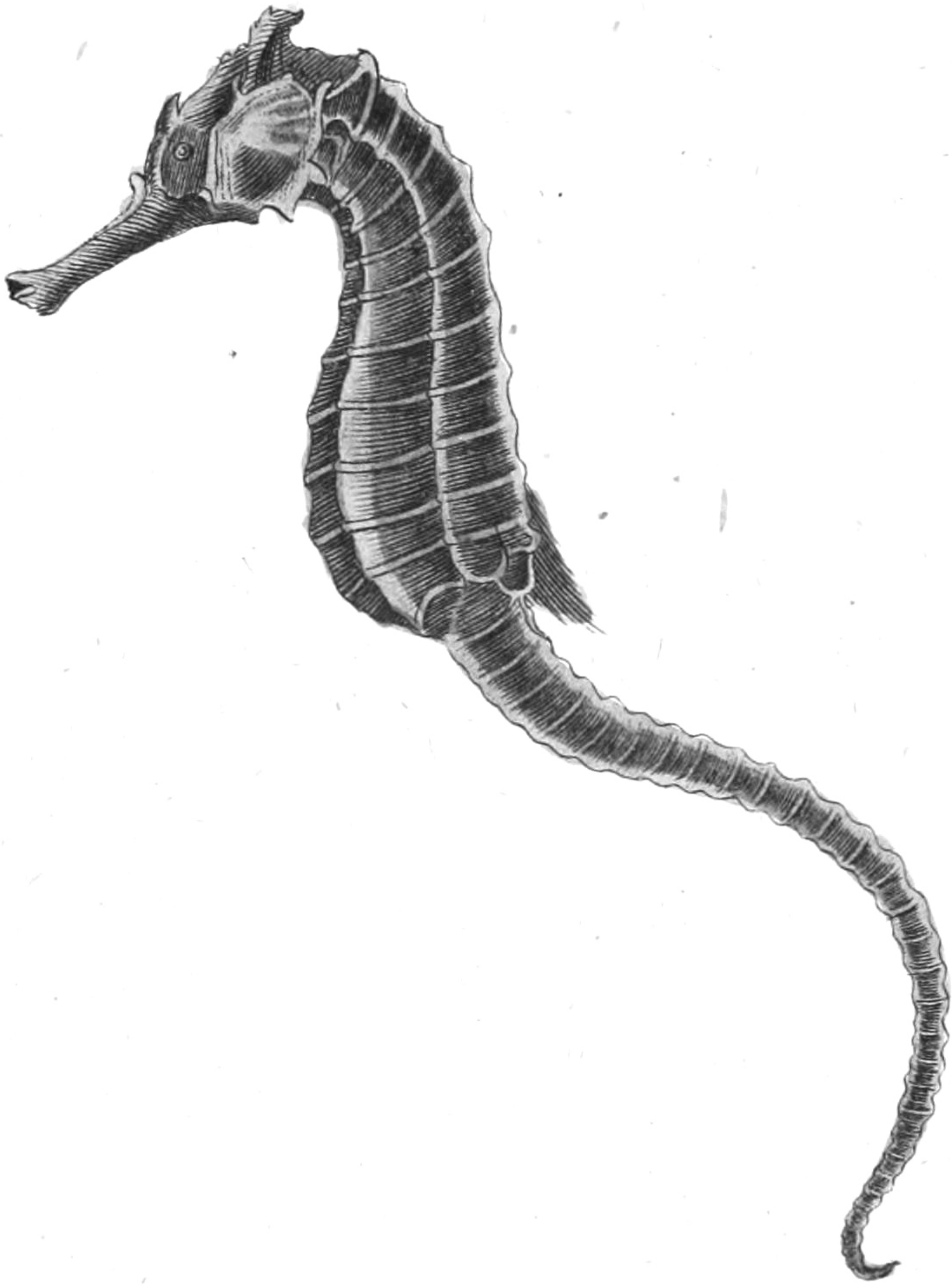
BLACK SNAKE,
Pseudechis porphyriacus.

Helena Forde, del. et lith.

J. A. Engel, imp



1. STYLOPHORA FLABELLATA. 2. S. CELLULOSA. 3. POCILLOPORA PAUCISTELLATA.
 4. P. SOLIDA. 5. OCULINA RECTA. 6. O. CORONALIS.



Syngnathus Hippocampus, Linn.
Das Seepferdchen.