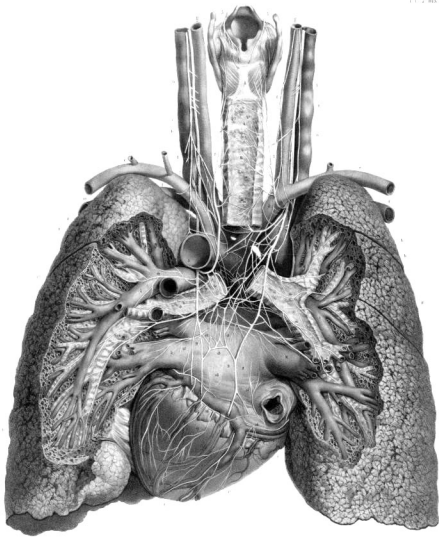
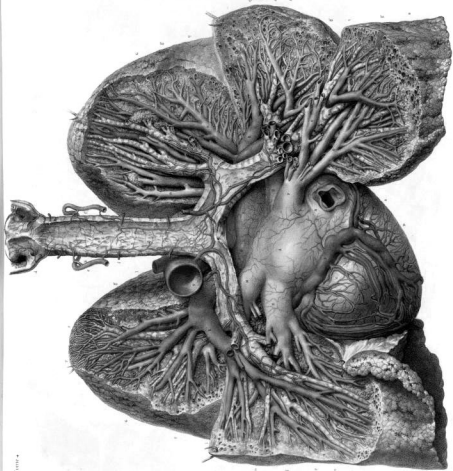


Engraving by

London: Taylor & Francis, 1840.

London: Taylor & Francis, 1840.





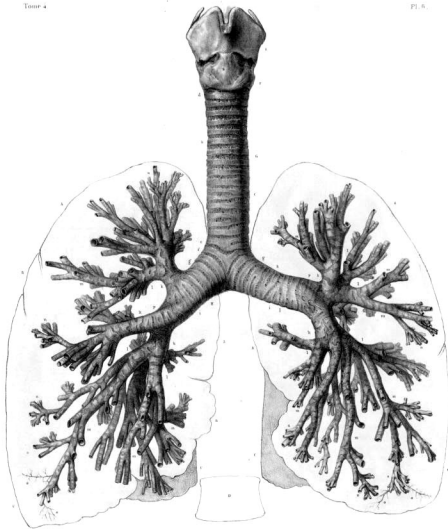


Fig. 2

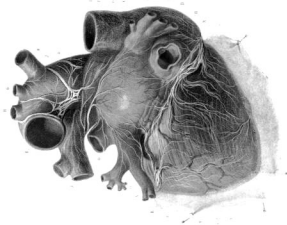
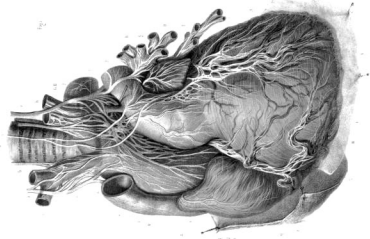
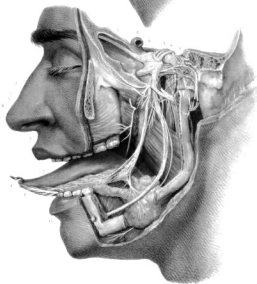
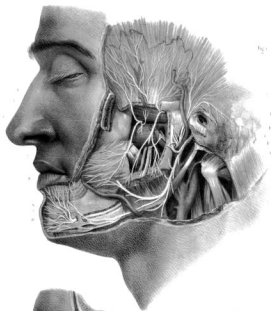


Fig. 1





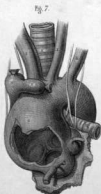
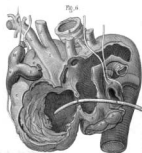
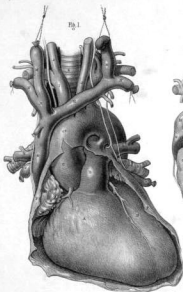
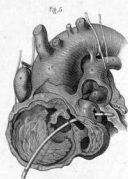
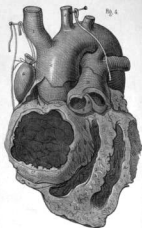
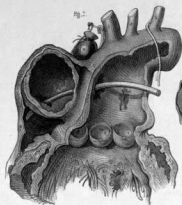


Fig 1

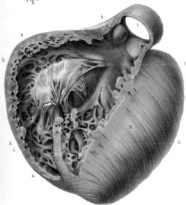


Fig 2

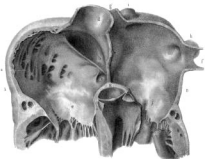


Fig 3

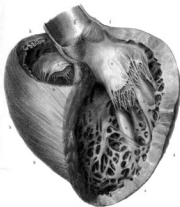
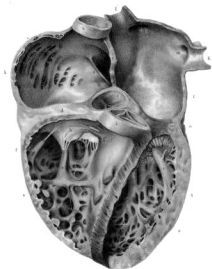
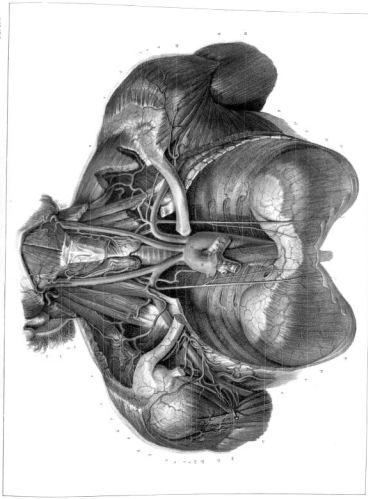
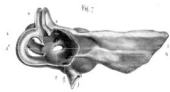
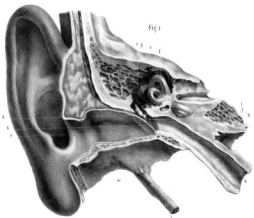
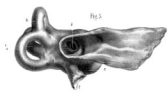


Fig 4







Tab. Anst. Anat.

Preparation per Goltner
 Dissectio digna auctore per T. Fischer

Imp. Universitatis et Academiae Scientiarum

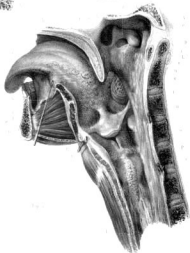
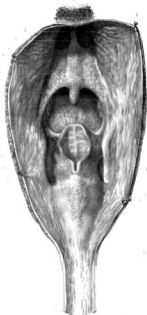
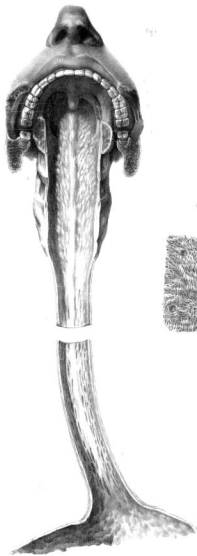


Fig 2

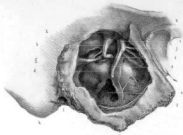


Fig 1

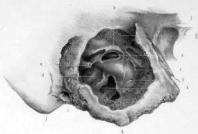


Fig 3



Fig 4



Fig 5

